

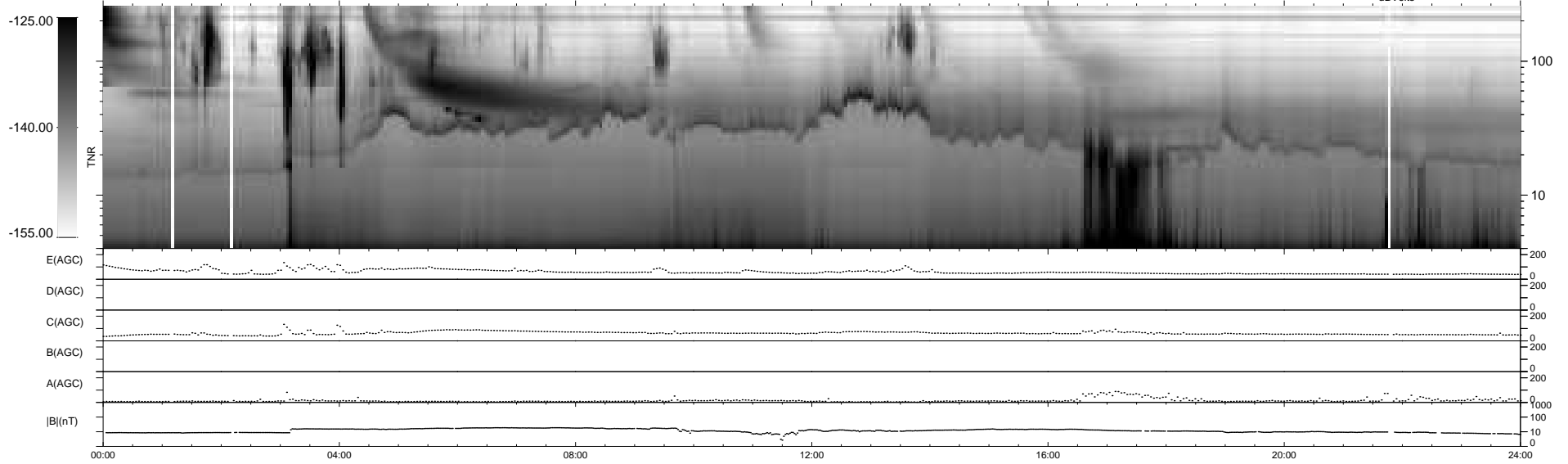
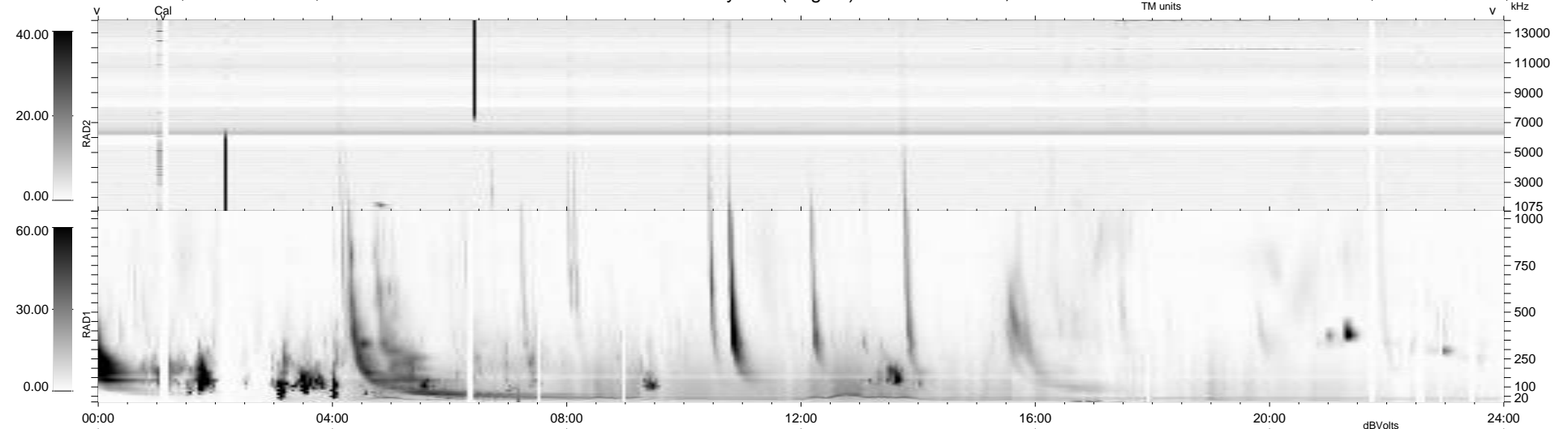
35 bad + 904 good MF/939MF projected (96%) - 0 missing MFs  
 Avg interval = 180 secs  
 Re = -230.56 (209.89, 95.22, -6.14 GSE)

windlib 2.0b

LZ version = v01

### WIND/WAVES Summary Plot (Page 1) for 19-FEB-2014, DOY = 50

DAILY 2014-02-20 20:46:03  
 Re = 231.92 (211.04, 96.01, -5.52 GSE)



```

RAD2
Antenna Ey .....
Mode LIN(1) .....
SUM/SEP SEP .....
Toggle OFF .....

RAD1
Antenna Ex .....
Mode LIS(2,4) .....
SUM/SEP SUM .....
Toggle OFF .....

TNR
Antenna ExEy .....
Mode A-32 .....
Sweep ACE .....
  
```