

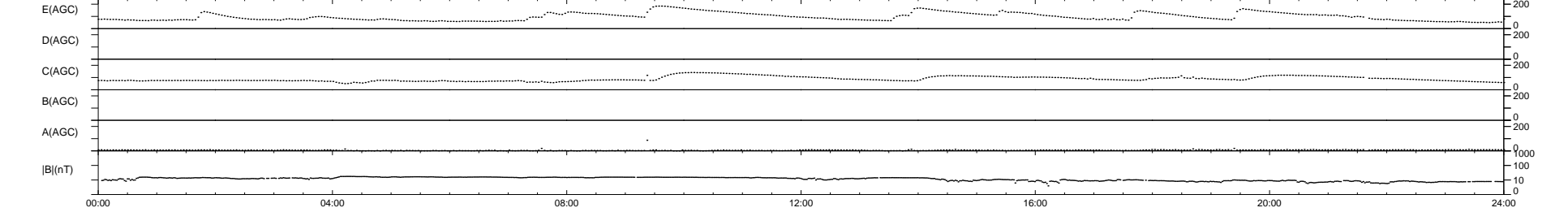
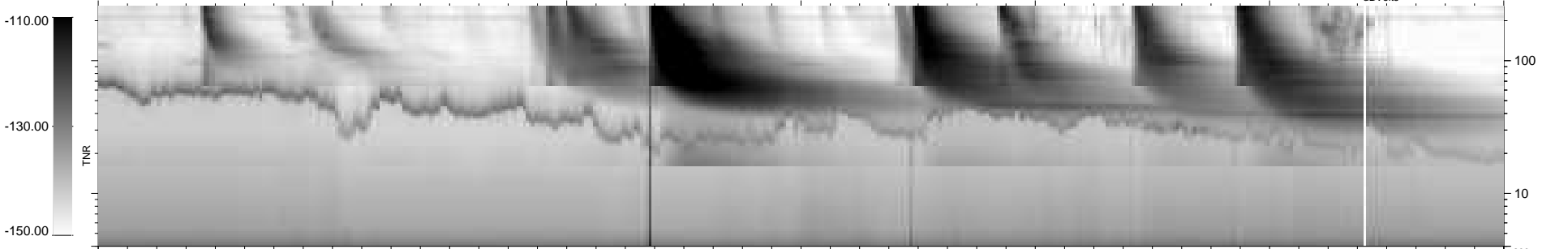
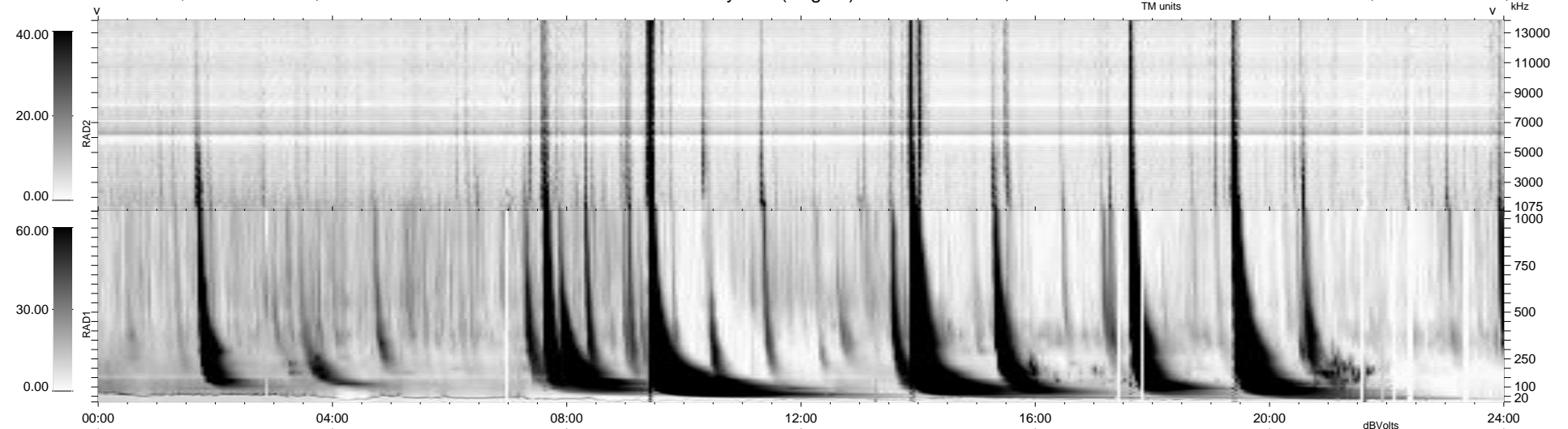
27 bad + 912 good MF/939MF projected (97%) - 0 missing MFs  
 Avg interval = 180 secs  
 Re = 226.50 (206.74, 92.17, -7.94 GSE)

windlib 2.0b

LZ version = v01

### WIND/WAVES Summary Plot (Page 1) for 16-FEB-2014, DOY = 47

DAILY 2014-02-18 02:46:03  
 Re = 227.83 (207.73, 93.29, -7.35 GSE)



RAD2  
 Antenna Ey  
 Mode LIN(1)  
 SUM/SEP SEP  
 Toggle OFF

RAD1  
 Antenna Ex  
 Mode LIS(2,4)  
 SUM/SEP SUM  
 Toggle OFF

TNR  
 Antenna ExEy  
 Mode A-32  
 Sweep ACE