

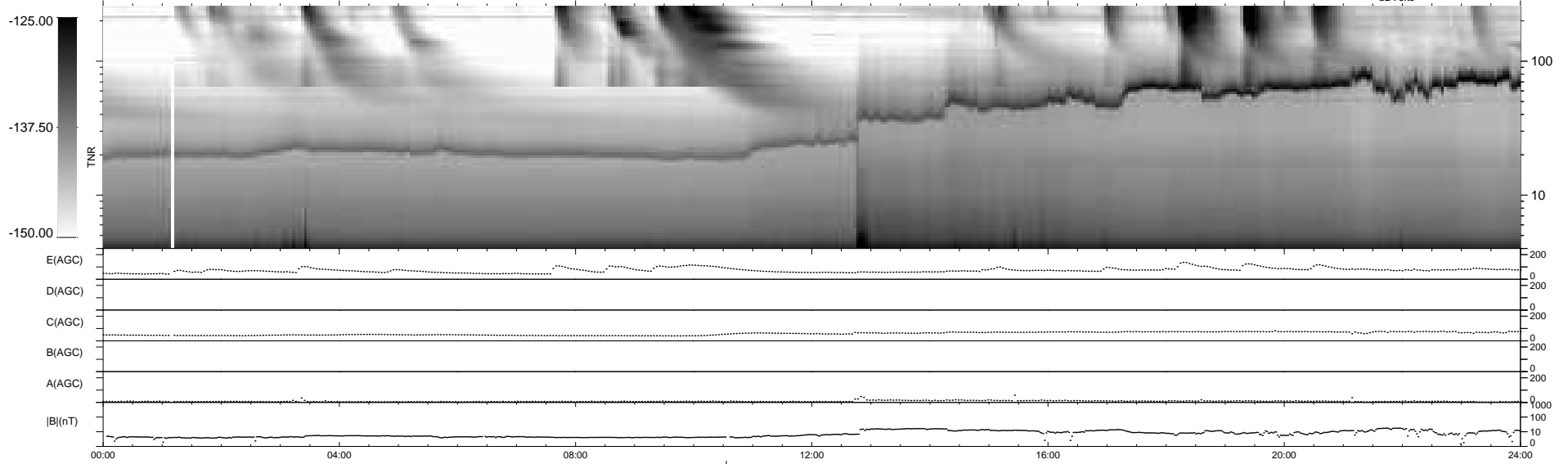
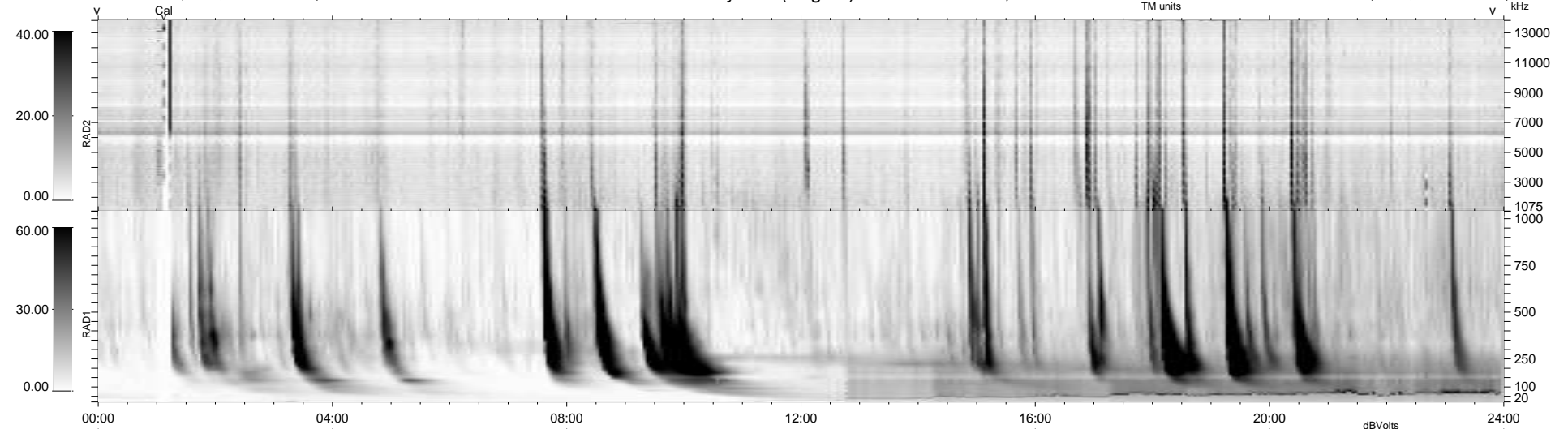
6 bad + 932 good MF/939MF projected (99%) - 1 missing MF
 Avg interval = 180 secs
 Re = - 225.17 (205.82, 90.93, -8.52 GSE)

windlib 2.0b

LZ version = v01

WIND/WAVES Summary Plot (Page 1) for 15-FEB-2014, DOY = 46

DAILY 2014-02-16 09:46:04
 Re = 226.49 (206.74, 92.16, -7.94 GSE)



RAD2
 Antenna Ey
 Mode LIN(1)
 SUM/SEP SEP
 Toggle OFF
 RAD1
 Antenna Ex
 Mode LIS(2,4)
 SUM/SEP SUM
 Toggle OFF
 TNR
 Antenna ExEy
 Mode A-32
 Sweep ACE