

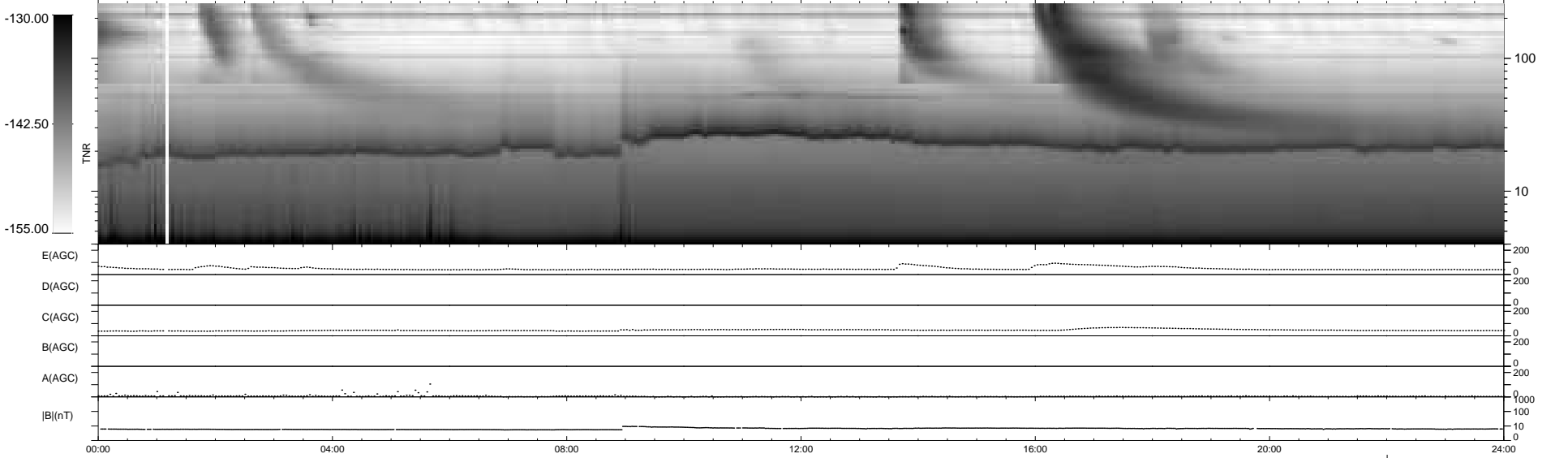
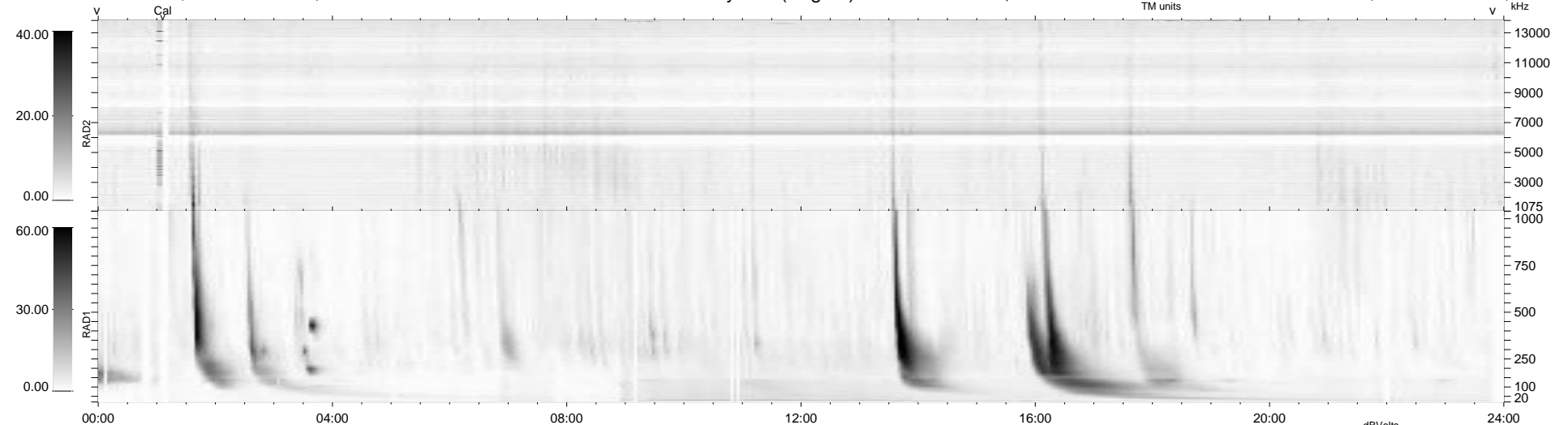
14 bad + 924 good MF/939MF projected (98%) - 1 missing MF
 Avg interval = 180 secs
 Re = 222.55 (204.16, 88.07, -9.63 GSE)

windlib 2.0b

LZ version = v02

WIND/WAVES Summary Plot (Page 1) for 13-FEB-2014, DOY = 44

DAILY 2014-02-17 09:46:03
 Re = 223.85 (204.95, 89.55, -9.08 GSE)



RAD2
 Antenna Ey
 Mode LIN(1)
 SUM/SEP SEP
 Toggle OFF
 RAD1
 Antenna Ex
 Mode LIS(2,4)
 SUM/SEP SUM
 Toggle OFF
 TNR
 Antenna ExEy
 Mode A-32
 Sweep ACE