

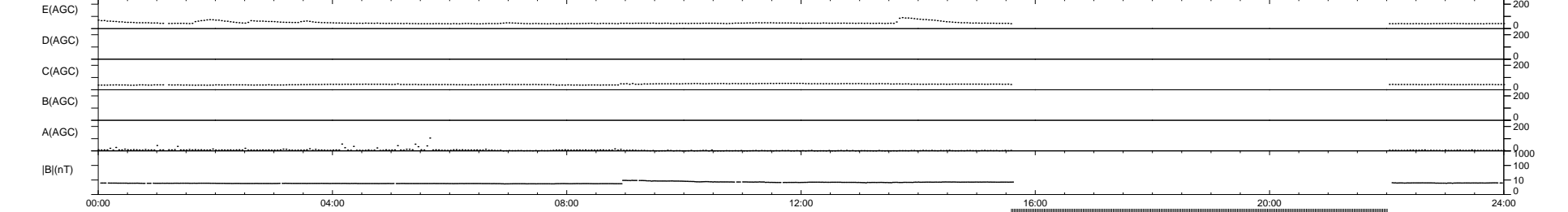
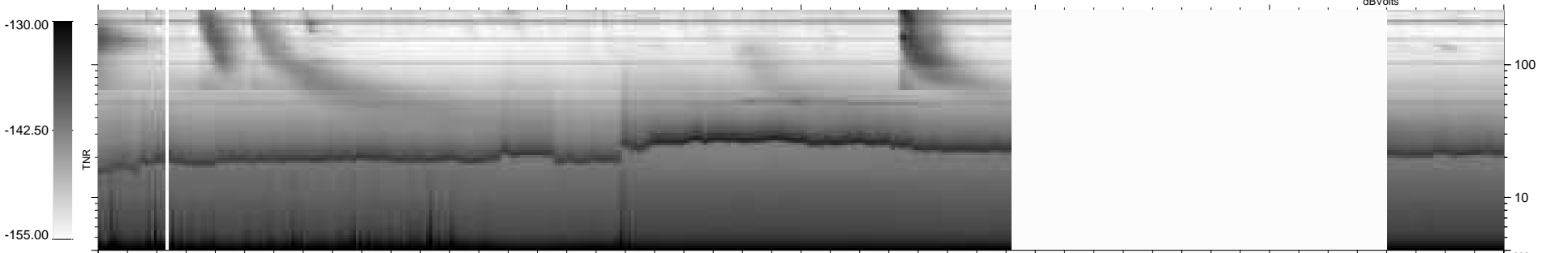
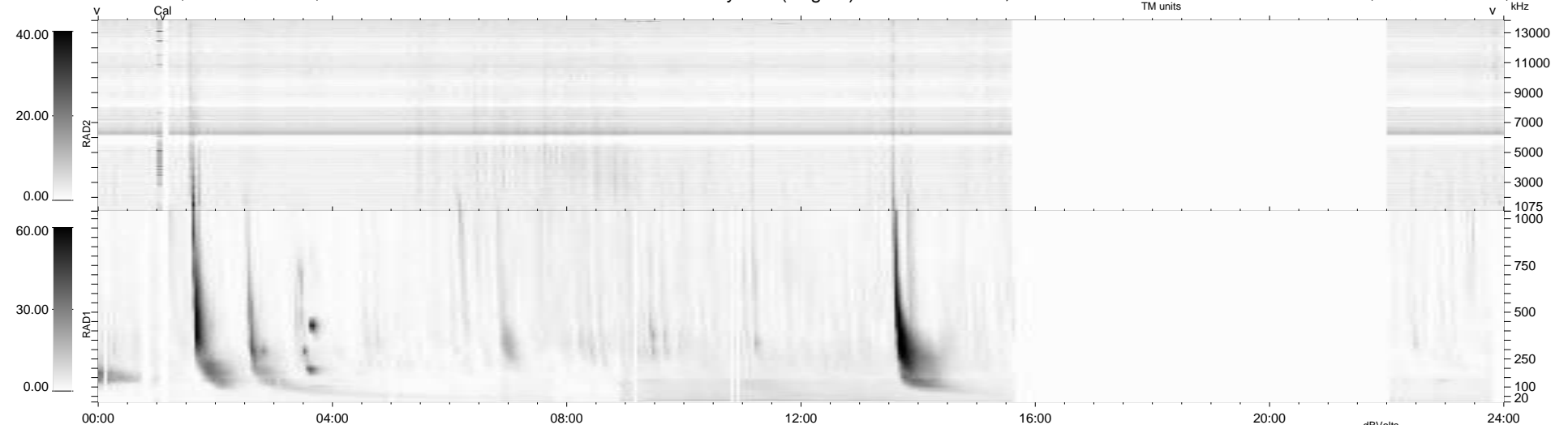
12 bad + 675 good MF/939MF projected (71%) - 252 missing MFs  
 Avg interval = 180 secs  
 Re = 222.55 (204.16, 88.07, -9.63 GSE)

windlib 2.0b

LZ version = v01

### WIND/WAVES Summary Plot (Page 1) for 13-FEB-2014, DOY = 44

DAILY 2014-02-15 03:46:03  
 Re = 223.85 (204.95, 89.55, -9.08 GSE)



RAD2  
 Antenna Ey  
 Mode LIN(1)  
 SUM/SEP SEP  
 Toggle OFF

RAD1  
 Antenna Ex  
 Mode LIS(2,4)  
 SUM/SEP SUM  
 Toggle OFF

TNR  
 Antenna ExEy  
 Mode A-32  
 Sweep ACE