

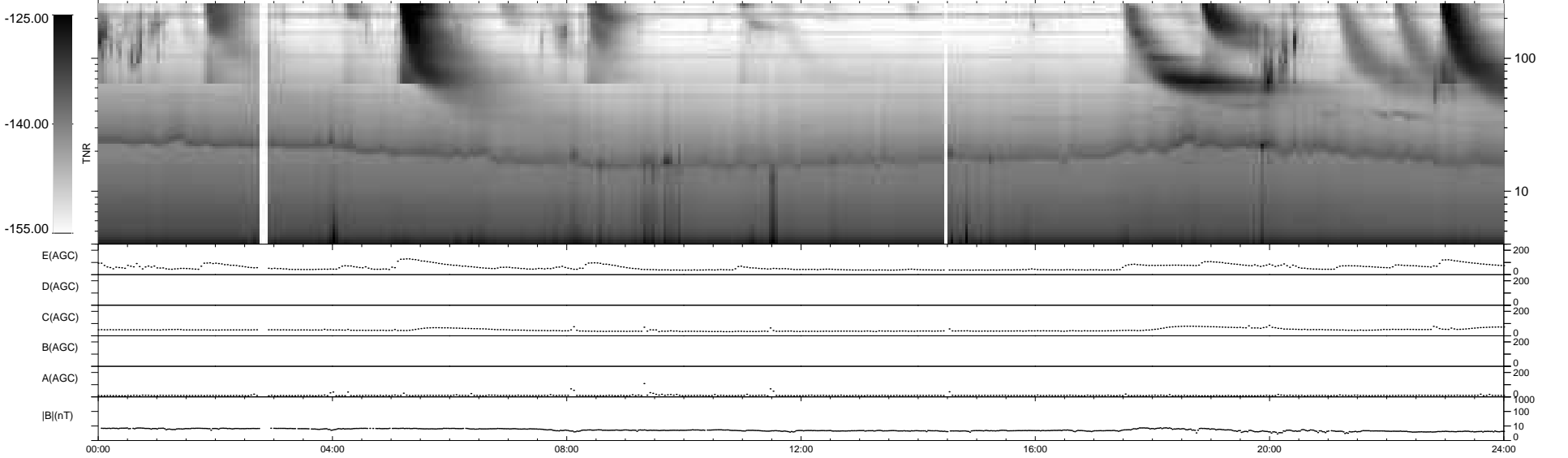
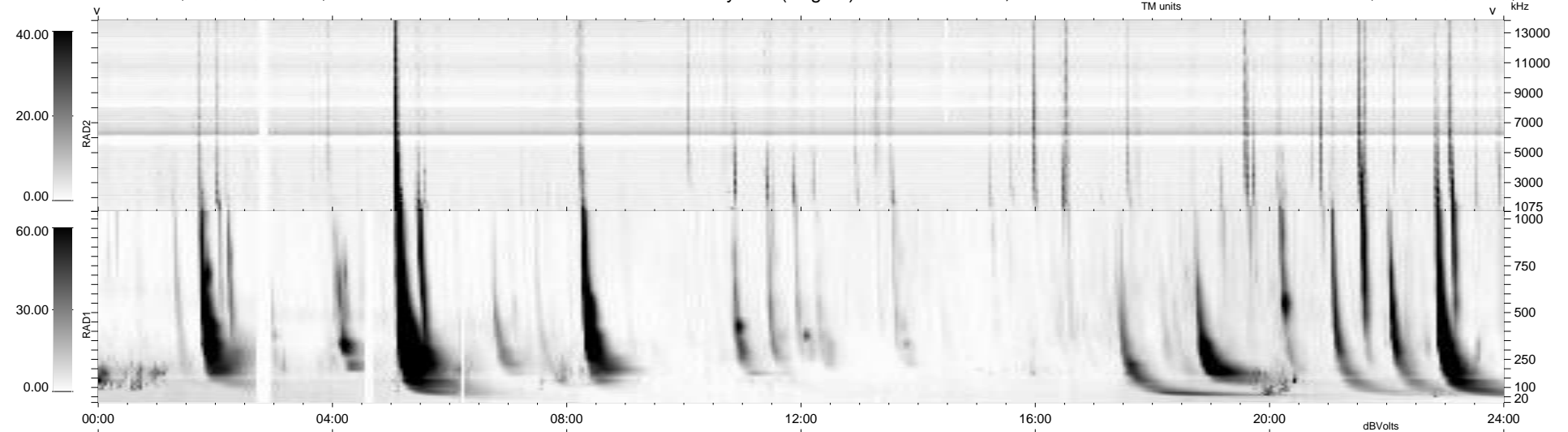
20 bad + 919 good MF/939MF projected (97%) - 0 missing MFs  
 Avg interval = 180 secs  
 Re = 218.72 (202.13, 82.79, -11.17 GSE)

windlib 2.0b

LZ version = v01

### WIND/WAVES Summary Plot (Page 1) for 10-FEB-2014, DOY = 41

DAILY 2014-02-11 19:46:03  
 Re = 219.98 (202.75, 84.67, -10.67 GSE)



RAD2 Antenna Ey .....  
 Mode LIN(1) .....  
 SUM/SEP SEP .....  
 Toggle OFF .....  
 RAD1 Antenna Ex .....  
 Mode LIS(2,4) .....  
 SUM/SEP SUM .....  
 Toggle OFF .....  
 TNR Antenna ExEy .....  
 Mode A-32 .....  
 Sweep ACE .....