

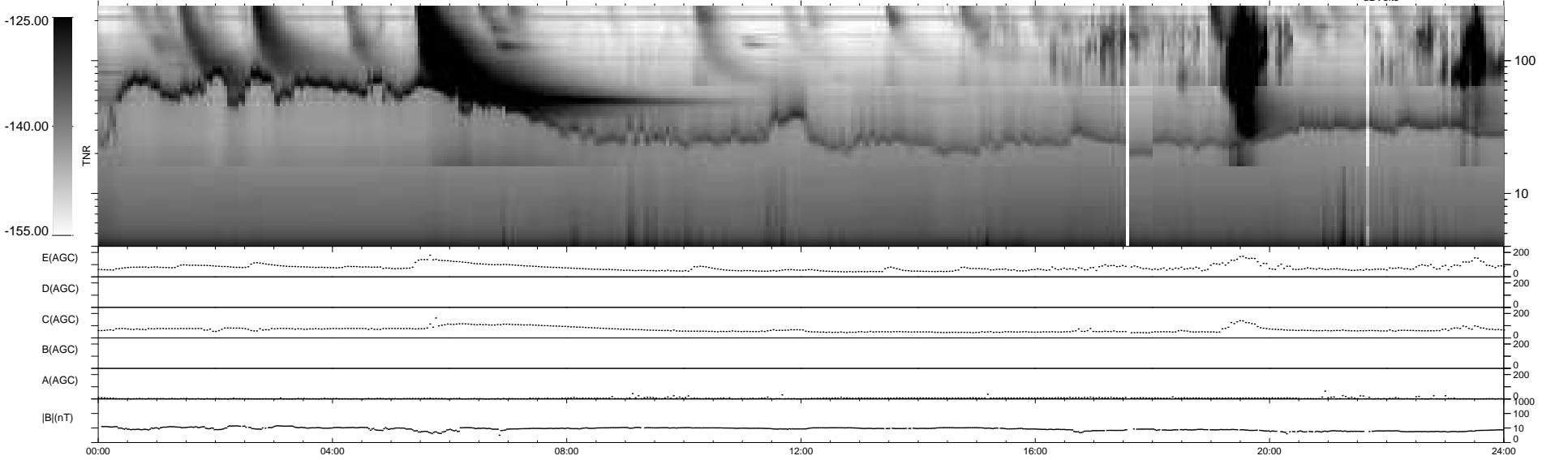
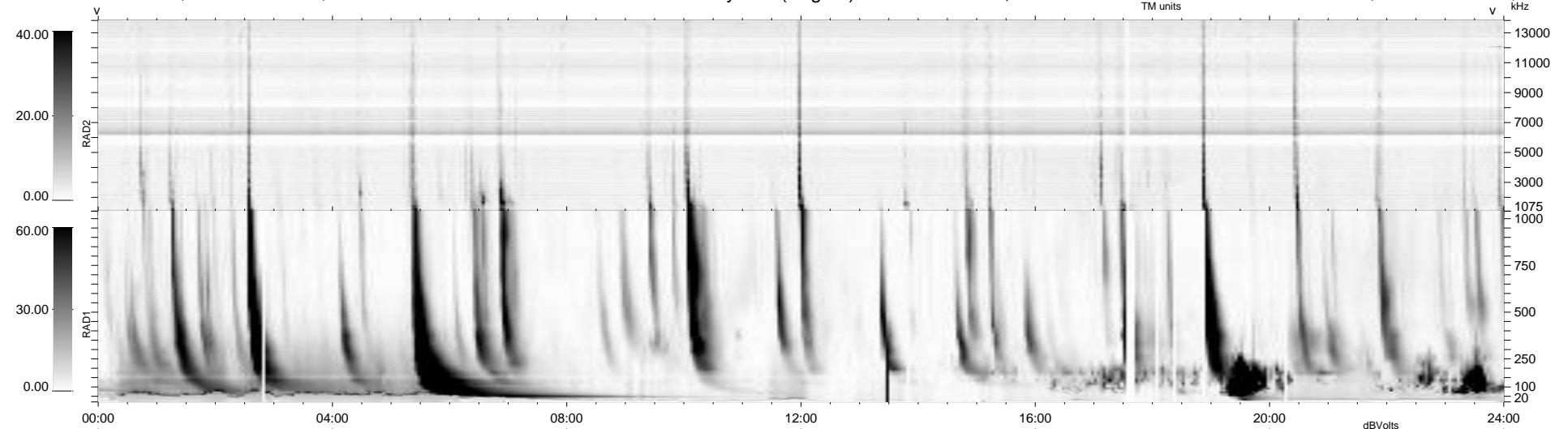
34 bad + 905 good MF/939MF projected (96%) - 0 missing MFs
 Avg interval = 180 secs
 Re = 216.21 (201.06, 78.58, -12.10 GSE)

windlib 2.0b

LZ version = v01

WIND/WAVES Summary Plot (Page 1) for 08-FEB-2014, DOY = 39

DAILY 2014-02-09 16:46:05
 Re = 217.45 (201.57, 80.74, -11.65 GSE)



RAD2
 Antenna Ey
 Mode LIN(1)
 SUM/SEP SEP
 Toggle OFF
 RAD1
 Antenna Ex
 Mode LIS(2,4)
 SUM/SEP SUM
 Toggle OFF
 TNR
 Antenna ExEy
 Mode A-32
 Sweep ACE