

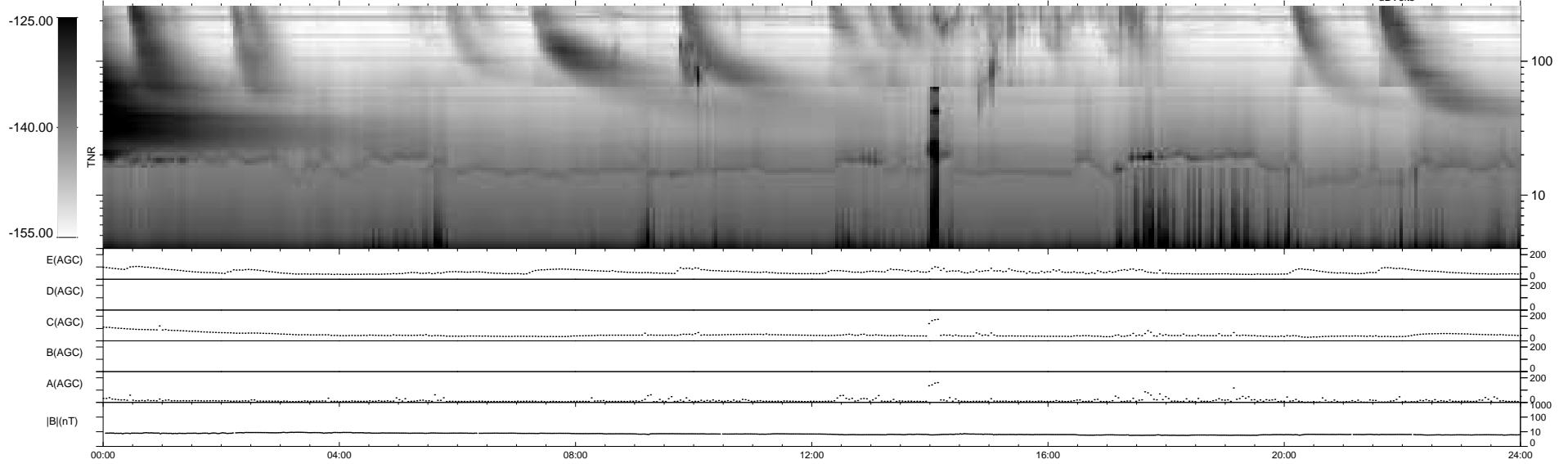
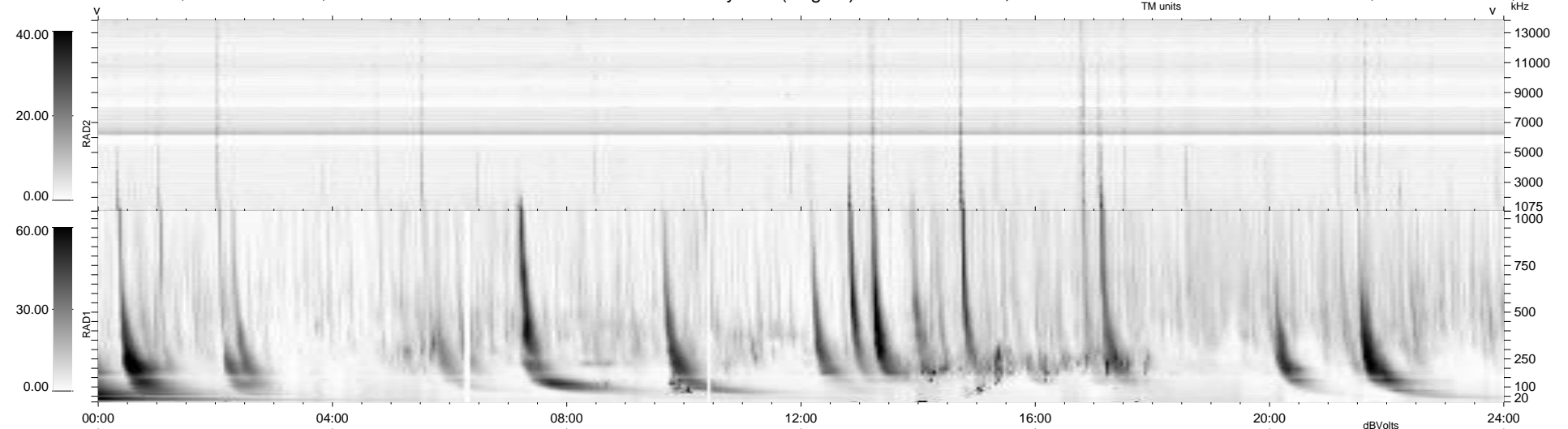
7 bad + 933 good MF/940MF projected (99%) - 0 missing MFs  
 Avg interval = 180 secs  
 Re = -213.73 (200.16, 73.81, -12.96 GSE)

windlib 2.0b

LZ version = v01

### WIND/WAVES Summary Plot (Page 1) for 06-FEB-2014, DOY = 37

DAILY 2014-02-07 19:46:03  
 Re = 214.96 (200.59, 76.25, -12.55 GSE)



RAD2  
 Antenna Ey  
 Mode LIN(1)  
 SUM/SEP SEP  
 Toggle OFF

RAD1  
 Antenna Ex  
 Mode LIS(2,4)  
 SUM/SEP SUM  
 Toggle OFF

TNR  
 Antenna ExEy  
 Mode A-32  
 Sweep ACE