

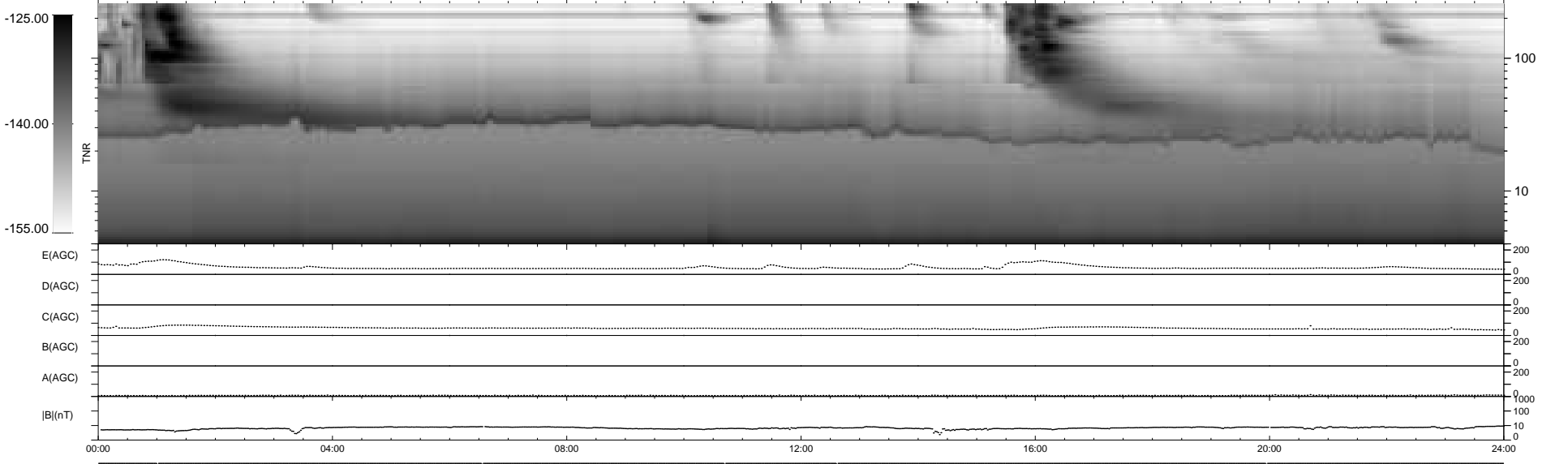
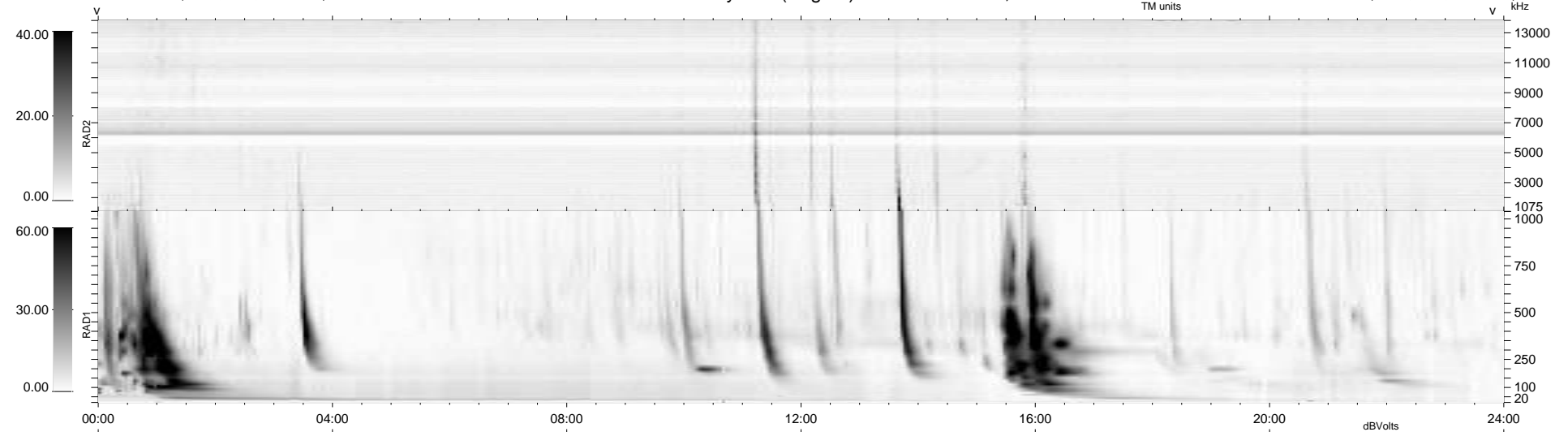
5 bad + 934 good MF/939MF projected (99%) - 0 missing MFs  
 Avg interval = 180 secs  
 Re = 210.93 (198.99, 68.59, -13.67 GSE)

windlib 2.0b

LZ version = v02

### WIND/WAVES Summary Plot (Page 1) for 04-FEB-2014, DOY = 35

DAILY 2014-02-07 11:46:03  
 Re = 212.12 (199.33, 71.31, -13.29 GSE)



RAD2  
 Antenna Ey .....  
 Mode LIN(1) .....  
 SUM/SEP SEP .....  
 Toggle OFF .....  
 RAD1  
 Antenna Ex .....  
 Mode LIS(2,4) .....  
 SUM/SEP SUM .....  
 Toggle OFF .....  
 TNR  
 Antenna ExEy .....  
 Mode A-32 .....  
 Sweep ACE .....