

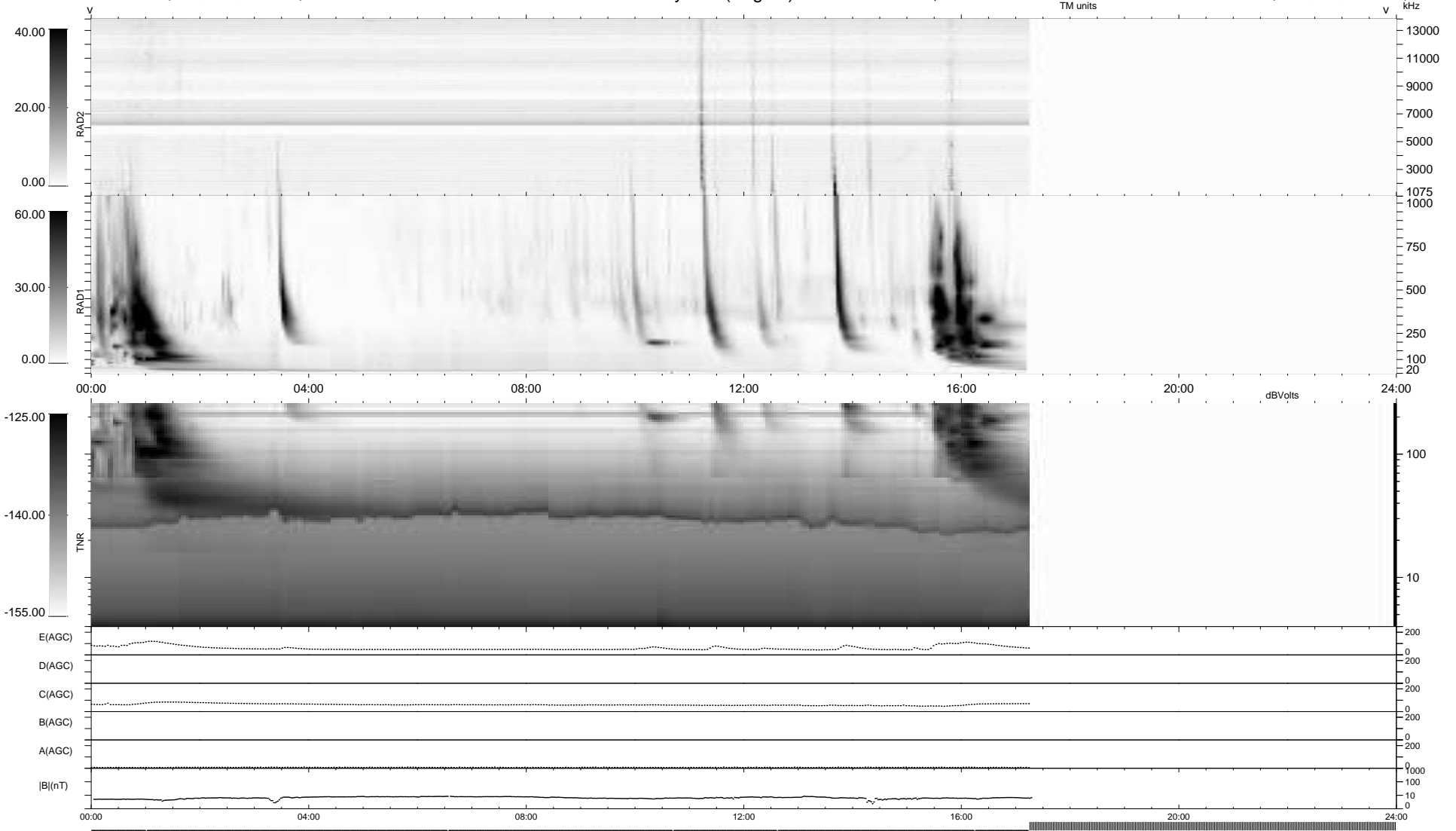
6 bad + 669 good MF/939MF projected (71%) - 264 missing MFs  
 Avg interval = 180 secs  
 Re = -210.93 (198.99, 68.59, -13.67 GSE)

windlib 2.0b

LZ version = v01

### WIND/WAVES Summary Plot (Page 1) for 04-FEB-2014, DOY = 35

DAILY 2014-02-05 22:46:03  
 Re = 212.12 (199.33, 71.31, -13.29 GSE)



```

RAD2
Antenna Ey .....
Mode LIN(1) .....
SUM/SEP SEP .....
Toggle OFF .....

RAD1
Antenna Ex .....
Mode LIS(2,4) .....
SUM/SEP SUM .....
Toggle OFF .....

TNR
Antenna ExEy .....
Mode A-32 .....
Sweep ACE .....
  
```