

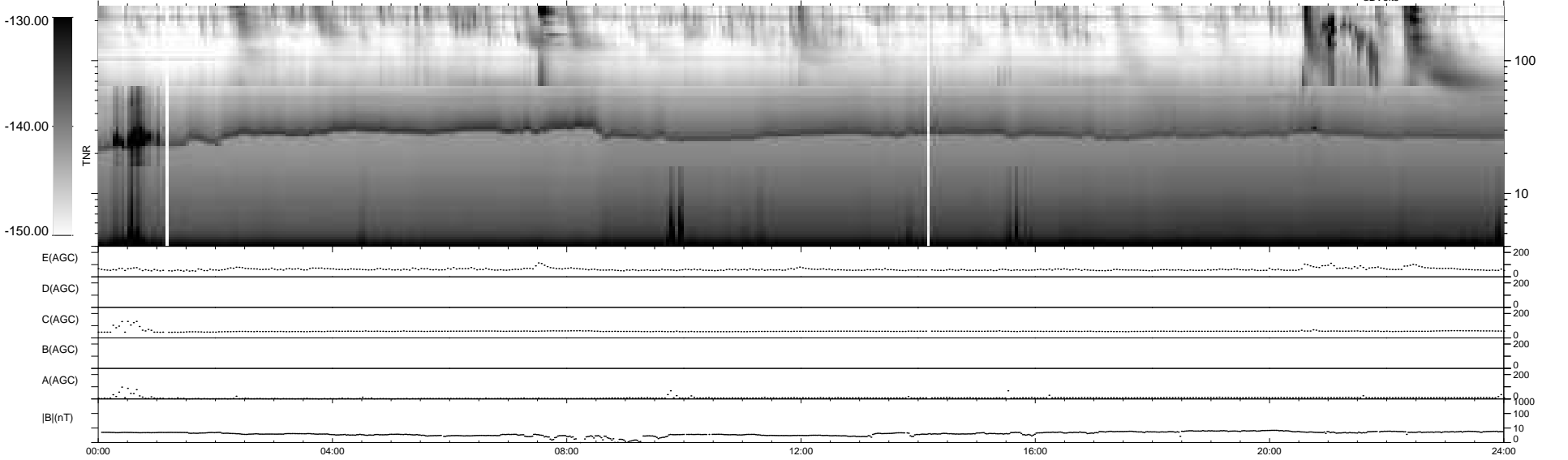
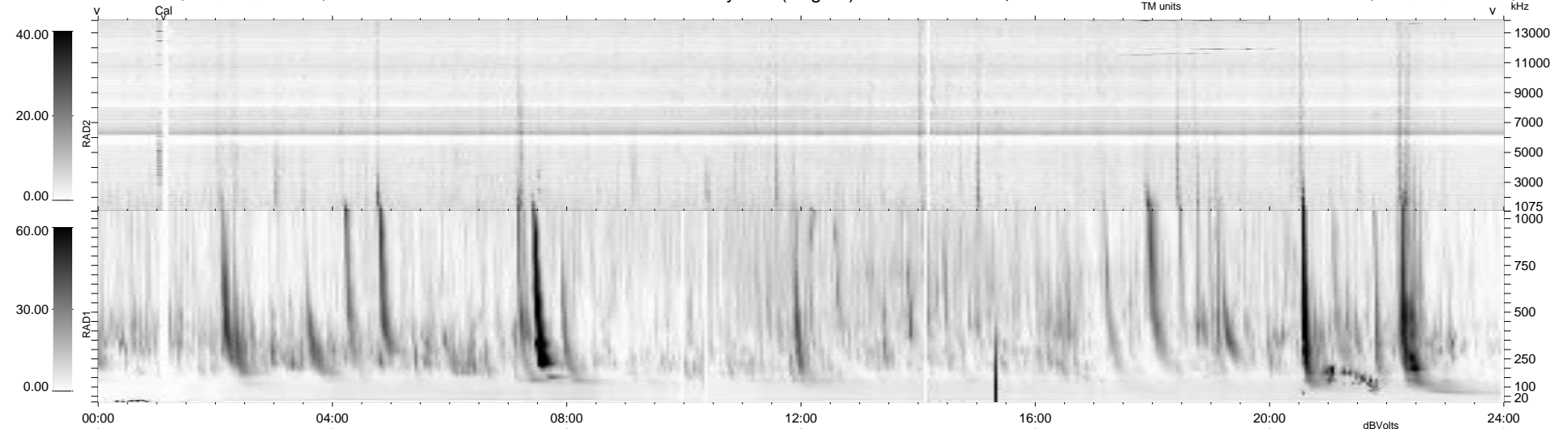
15 bad + 924 good MF/939MF projected (98%) - 0 missing MFs  
 Avg interval = 180 secs  
 Re = 207.33 (198.02, 59.64, -14.70 GSE)

windlib 2.0b

LZ version = v01

### WIND/WAVES Summary Plot (Page 1) for 01-FEB-2014, DOY = 32

DAILY 2014-02-03 10:46:03  
 Re = 208.52 (198.34, 62.72, -14.38 GSE)



```

RAD2
Antenna Ey .....
Mode LIN(1) .....
SUM/SEP SEP .....
Toggle OFF .....

RAD1
Antenna Ex .....
Mode LIS(2,4) .....
SUM/SEP SUM .....
Toggle OFF .....

TNR
Antenna ExEy .....
Mode A-32 .....
Sweep ACE .....
  
```