

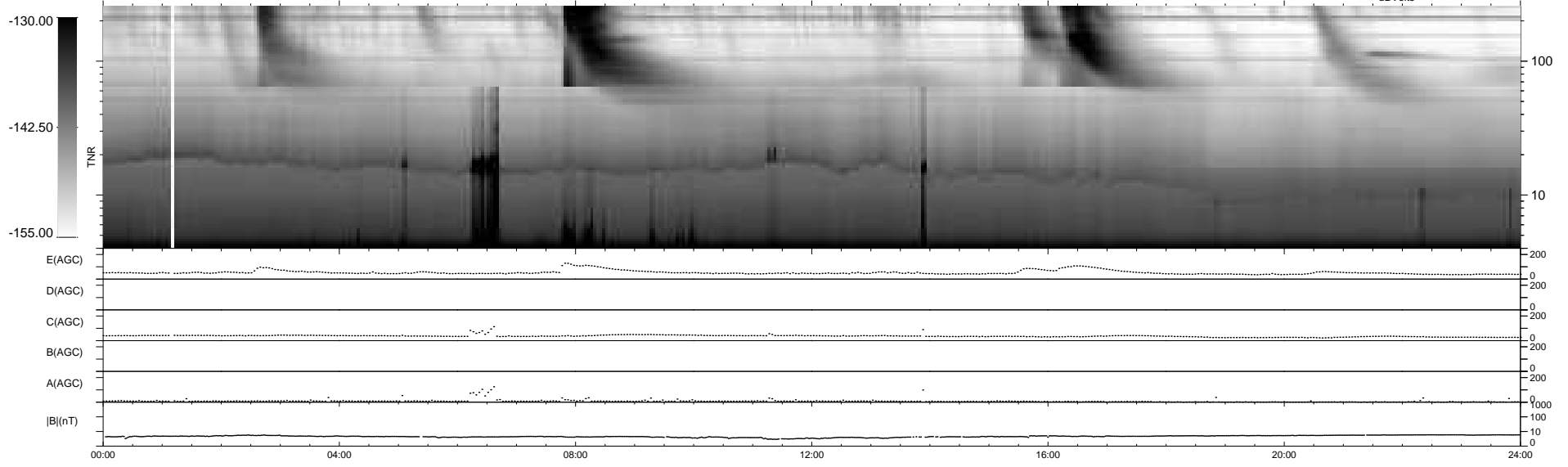
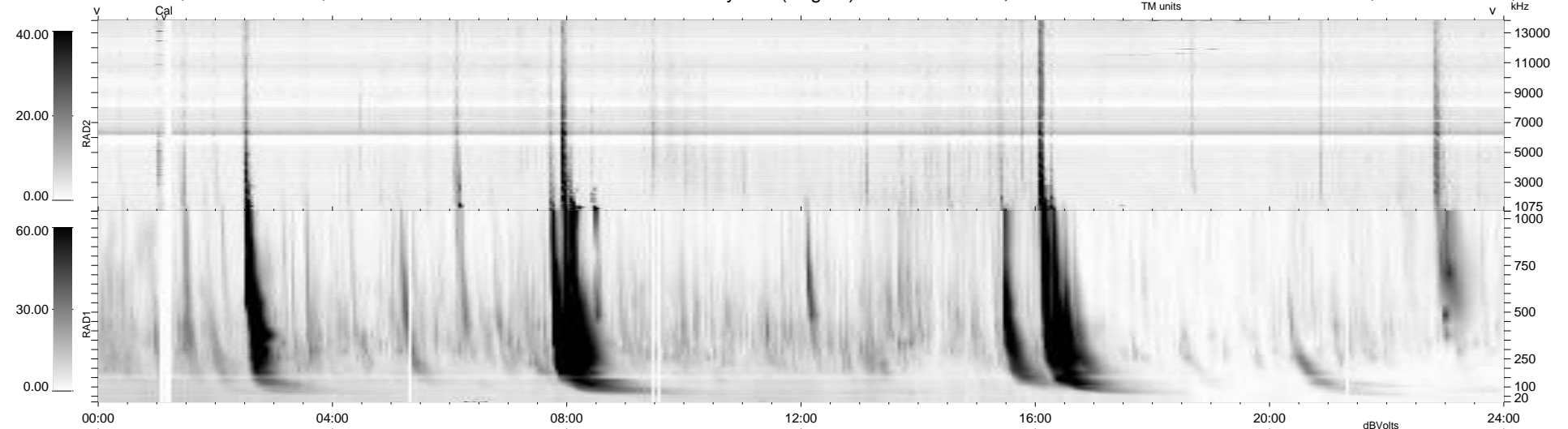
15 bad + 925 good MF/940MF projected (98%) - 0 missing MFs
 Avg interval = 180 secs
 Re = 204.95 (197.35, 53.14, -15.28 GSE)

windlib 2.0b

LZ version = v03

WIND/WAVES Summary Plot (Page 1) for 30-JAN-2014, DOY = 30

DAILY 2014-02-03 16:46:04
 Re = 206.12 (197.69, 56.41, -15.00 GSE)



RAD2
 Antenna Ey
 Mode LIN(1)
 SUM/SEP SEP
 Toggle OFF

RAD1
 Antenna Ex
 Mode LIS(2,4)
 SUM/SEP SUM
 Toggle OFF

TNR
 Antenna ExEy
 Mode A-32
 Sweep ACE