

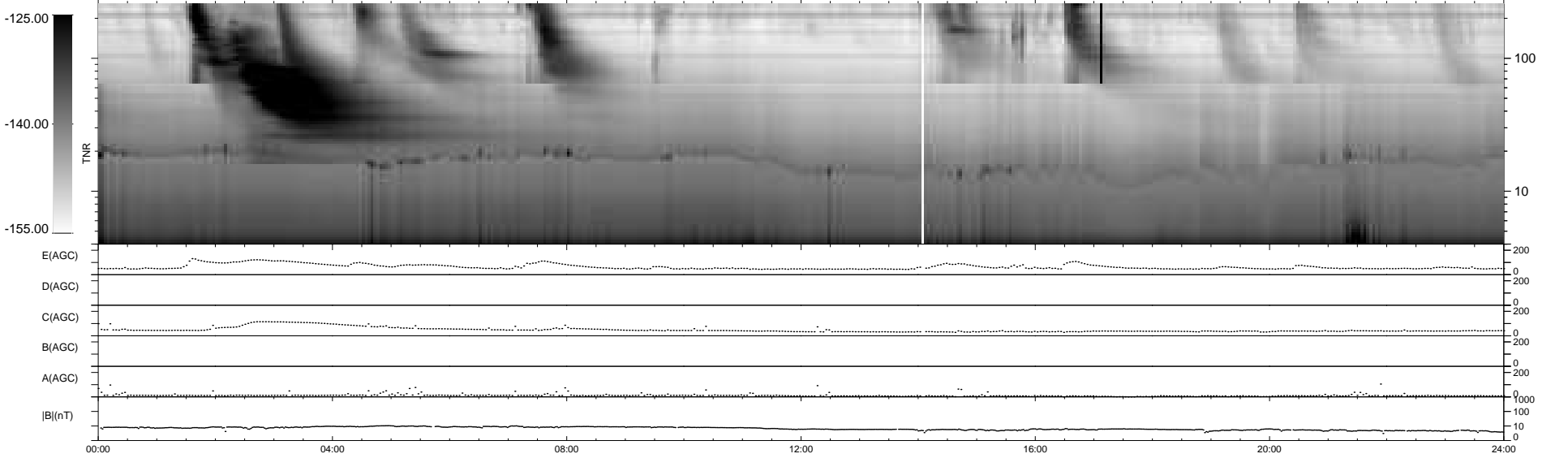
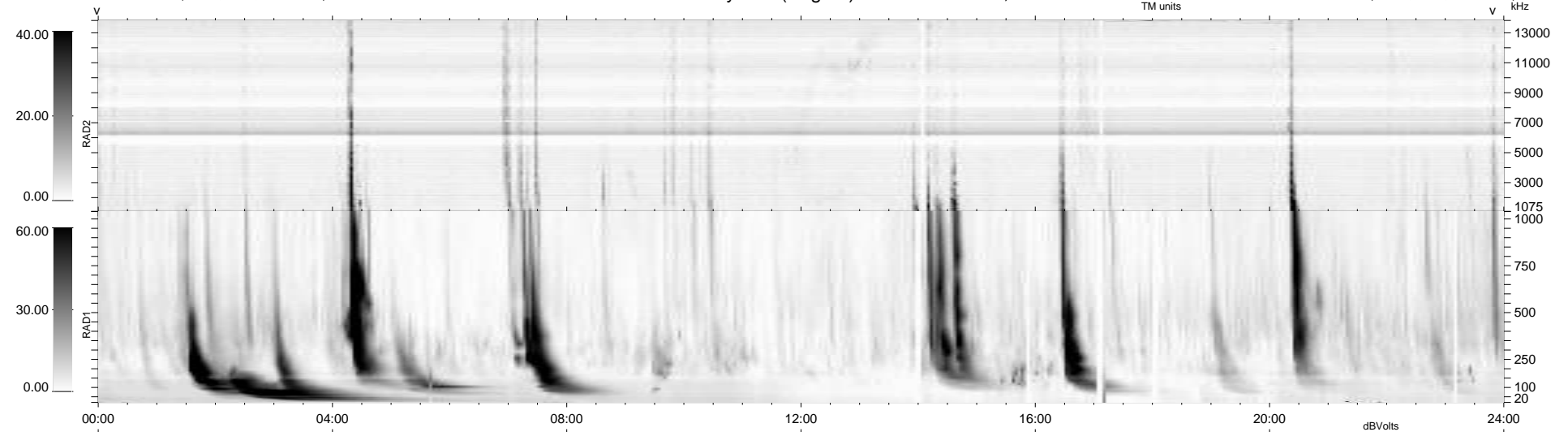
29 bad + 910 good MF/939MF projected (96%) - 0 missing MFs
 Avg interval = 180 secs
 Re = 203.79 (197.00, 49.78, -15.53 GSE)

windlib 2.0b

LZ version = v01

WIND/WAVES Summary Plot (Page 1) for 29-JAN-2014, DOY = 29

DAILY 2014-02-03 09:46:05
 Re = 204.94 (197.35, 53.12, -15.28 GSE)



```

RAD2
Antenna  Ey .....
Mode     LIN(1) .....
SUM/SEP  SEP .....
Toggle   OFF .....

RAD1
Antenna  Ex .....
Mode     LIS(2,4) .....
SUM/SEP  SUM .....
Toggle   OFF .....

TNR
Antenna  ExEy .....
Mode     A-32 .....
Sweep    ACE .....
  
```