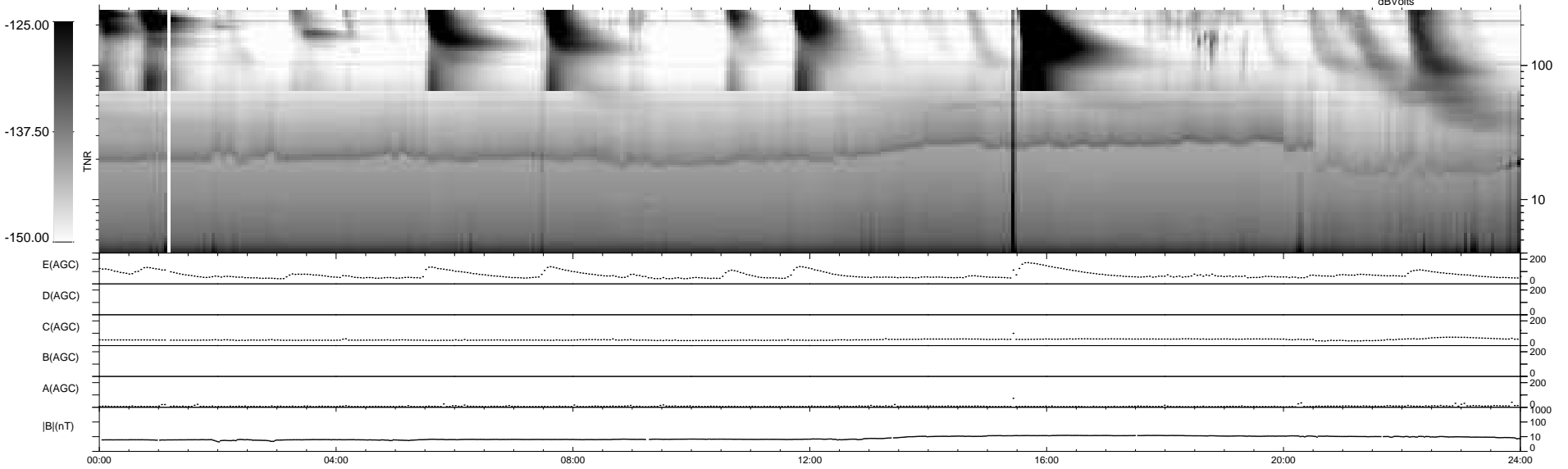
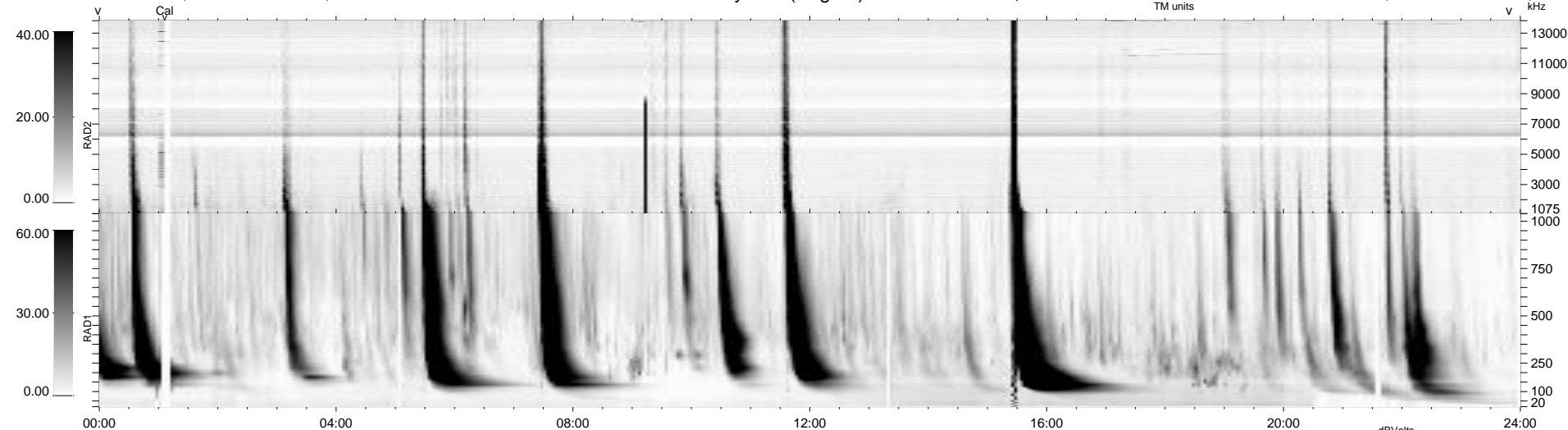


7 bad + 932 good MF/939MF projected (99%) - 0 missing MFs
 Avg interval = 180 secs
 Re = 202.65 (196.65, 46.35, -15.77 GSE)

windlib 2.0b LZ version = v01
 DAILY 2014-01-30 01:46:06
 Re = 203.78 (197.00, 49.75, -15.53 GSE)

WIND/WAVES Summary Plot (Page 1) for 28-JAN-2014, DOY = 28



RAD2
 Antenna Ey
 Mode LIN(1)
 SUM/SEP SEP
 Toggle OFF
 RAD1
 Antenna Ex
 Mode LIS(2,4)
 SUM/SEP SUM
 Toggle OFF
 TNR
 Antenna ExEy
 Mode A-32
 Sweep ACE