

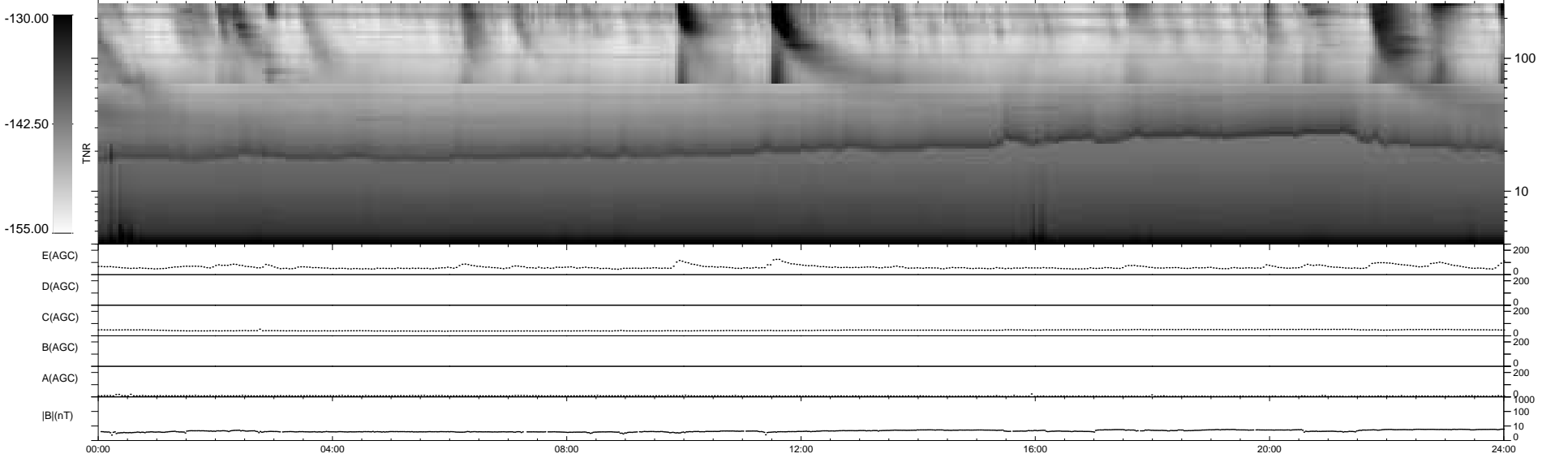
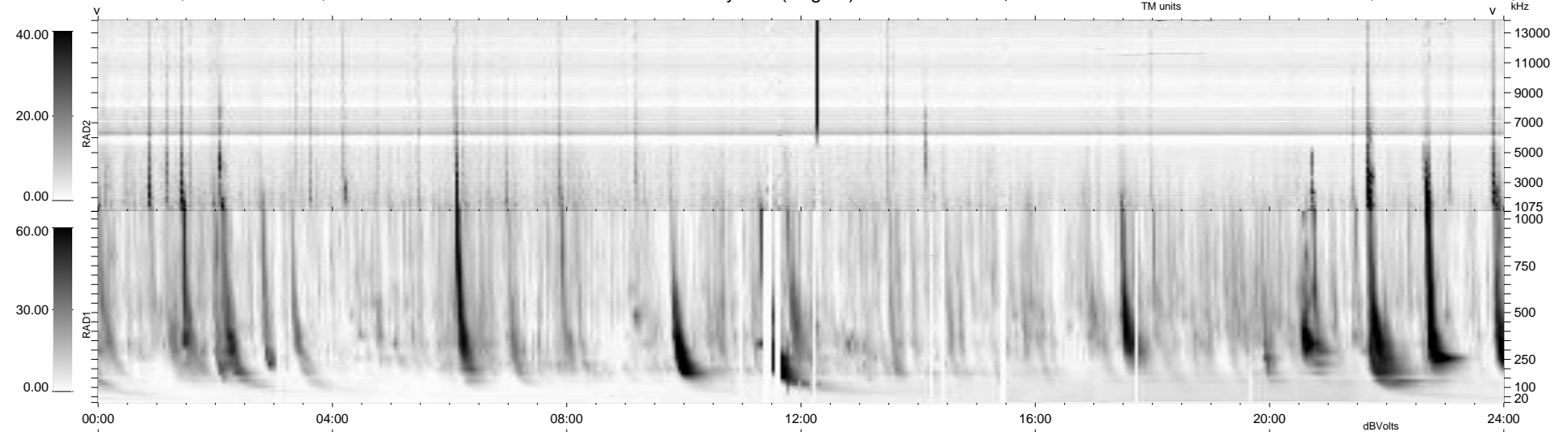
33 bad + 906 good MF/939MF projected (96%) - 0 missing MFs  
 Avg interval = 180 secs  
 Re = 201.56 (196.30, 42.87, -15.98 GSE)

windlib 2.0b

LZ version = v01

### WIND/WAVES Summary Plot (Page 1) for 27-JAN-2014, DOY = 27

DAILY 2014-01-29 02:46:03  
 Re = 202.65 (196.65, 46.33, -15.77 GSE)



RAD2  
 Antenna Ey .....  
 Mode LIN(1) .....  
 SUM/SEP SEP .....  
 Toggle OFF .....  
 RAD1  
 Antenna Ex .....  
 Mode LIS(2/4) .....  
 SUM/SEP SUM .....  
 Toggle OFF .....  
 TNR  
 Antenna ExEy .....  
 Mode A-32 .....  
 Sweep ACE .....