

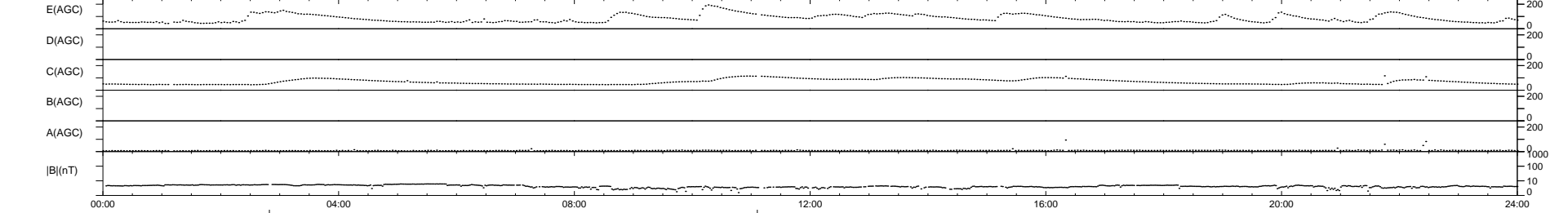
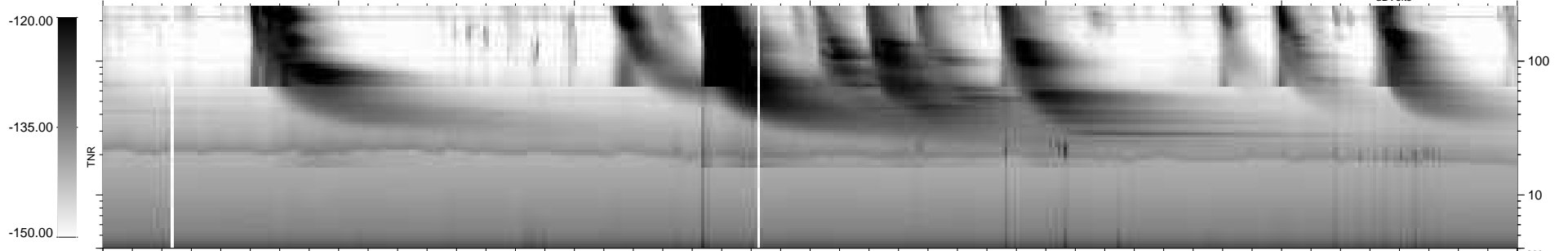
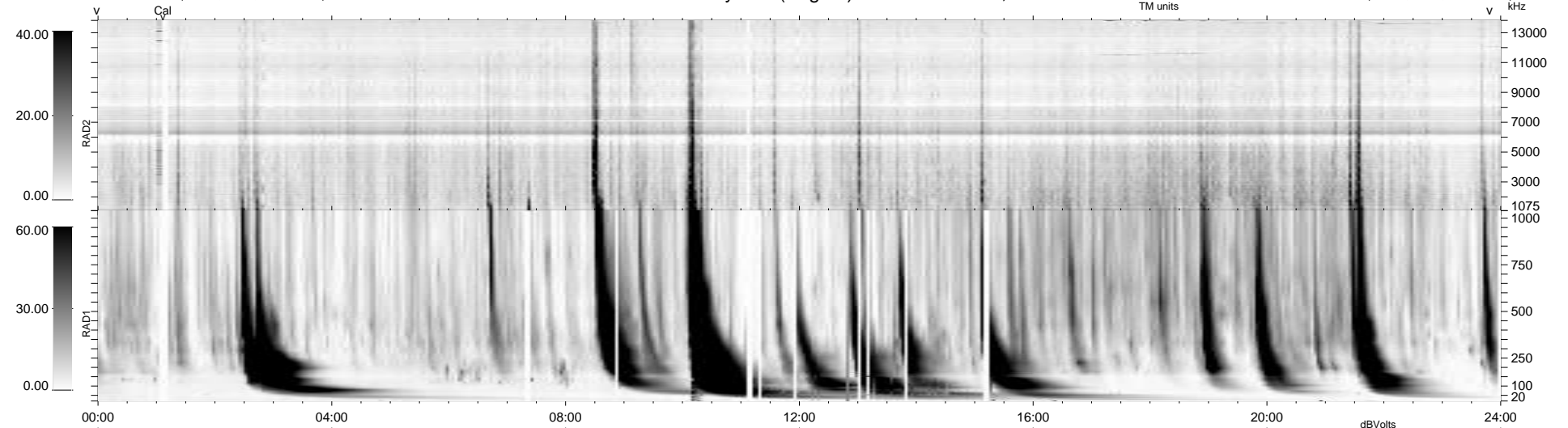
31 bad + 906 good MF/939MF projected (96%) - 2 missing MFs
 Avg interval = 180 secs
 Re = 200.51 (195.95, 39.36, -16.16 GSE)

windlib 2.0b

LZ version = v02

WIND/WAVES Summary Plot (Page 1) for 26-JAN-2014, DOY = 26

DAILY 2014-01-29 10:46:07
 Re = 201.55 (196.29, 42.85, -15.98 GSE)



RAD2
 Antenna Ey
 Mode LIN(1)
 SUM/SEP SEP
 Toggle OFF

RAD1
 Antenna Ex
 Mode LIS(2,4)
 SUM/SEP SUM
 Toggle OFF

TNR
 Antenna ExEy
 Mode A-32
 Sweep ACE