

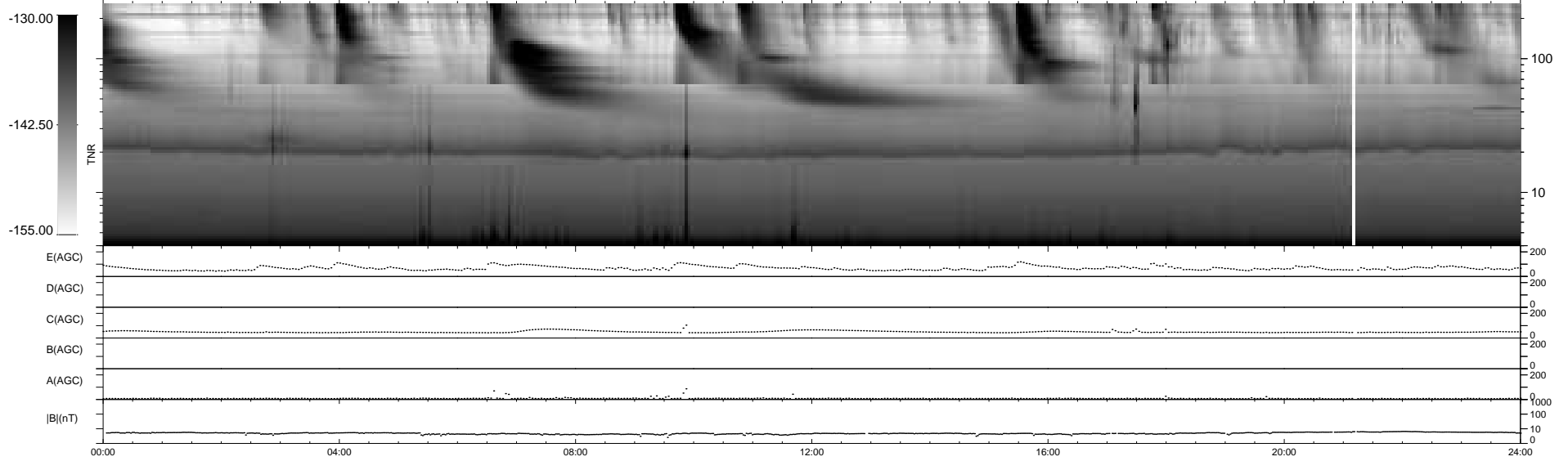
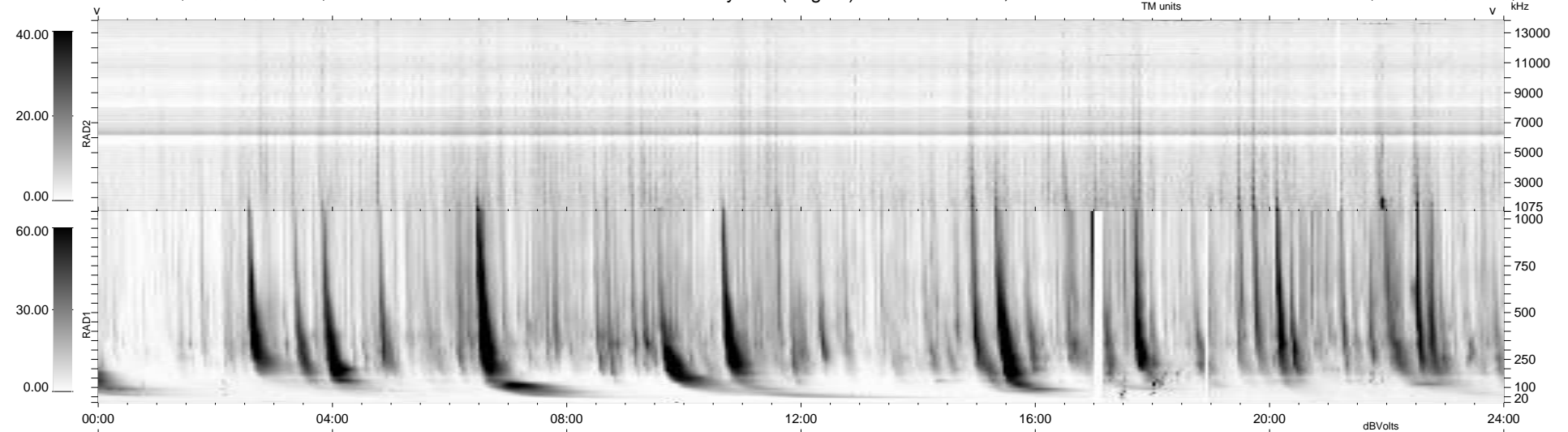
11 bad + 928 good MF/939MF projected (98%) - 0 missing MFs  
 Avg interval = 180 secs  
 Re = 199.53 (195.61, 35.81, -16.32 GSE)

windlib 2.0b

LZ version = v01

### WIND/WAVES Summary Plot (Page 1) for 25-JAN-2014, DOY = 25

DAILY 2014-01-27 00:46:03  
 Re = 200.51 (195.94, 39.33, -16.16 GSE)



RAD2  
 Antenna Ey .....  
 Mode LIN(1) .....  
 SUM/SEP SEP .....  
 Toggle OFF .....  
 RAD1  
 Antenna Ex .....  
 Mode LIS(2,4) .....  
 SUM/SEP SUM .....  
 Toggle OFF .....  
 TNR  
 Antenna ExEy .....  
 Mode A-32 .....  
 Sweep ACE .....