

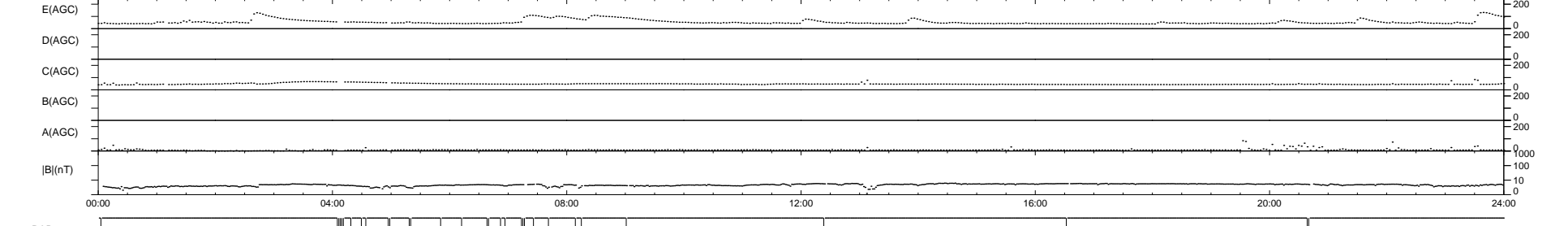
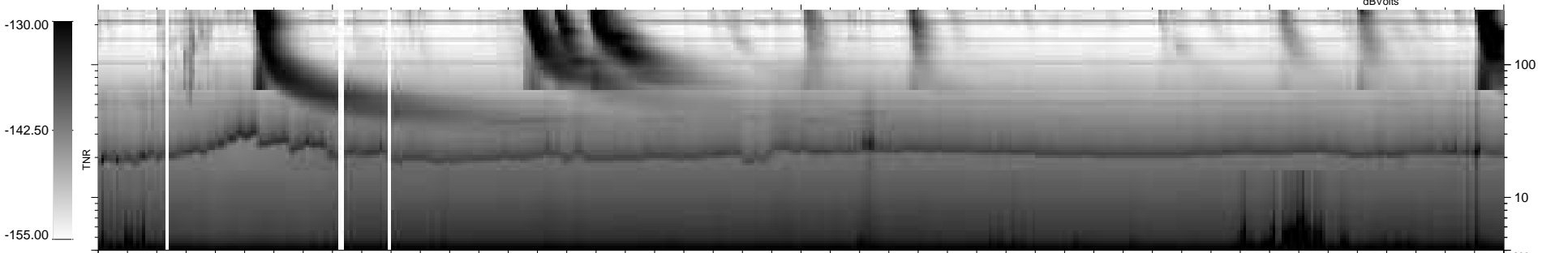
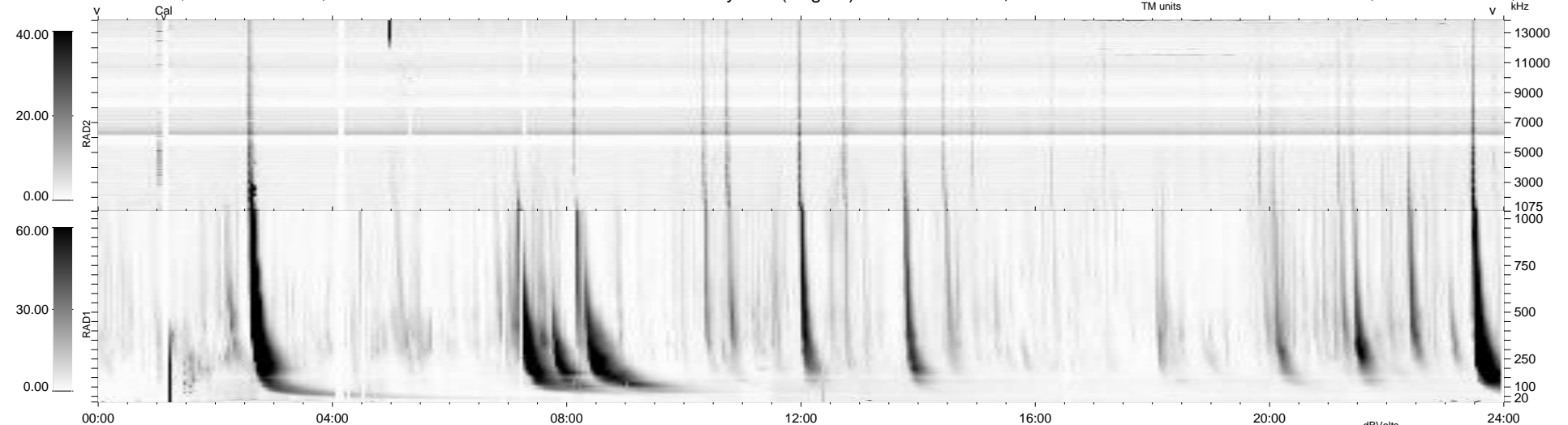
31 bad + 908 good MF/939MF projected (96%) - 0 missing MFs
 Avg interval = 180 secs
 Re = 198.61 (195.29, 32.24, -16.45 GSE)

windlib 2.0b

LZ version = v01

WIND/WAVES Summary Plot (Page 1) for 24-JAN-2014, DOY = 24

DAILY 2014-01-25 09:46:04
 Re = 199.52 (195.61, 35.78, -16.32 GSE)



RAD2
 Antenna Ey
 Mode LIN(1)
 SUM/SEP SEP
 Toggle OFF

RAD1
 Antenna Ex
 Mode LIS(2,4)
 SUM/SEP SUM
 Toggle OFF

TNR
 Antenna ExEy
 Mode A-32
 Sweep ACE