

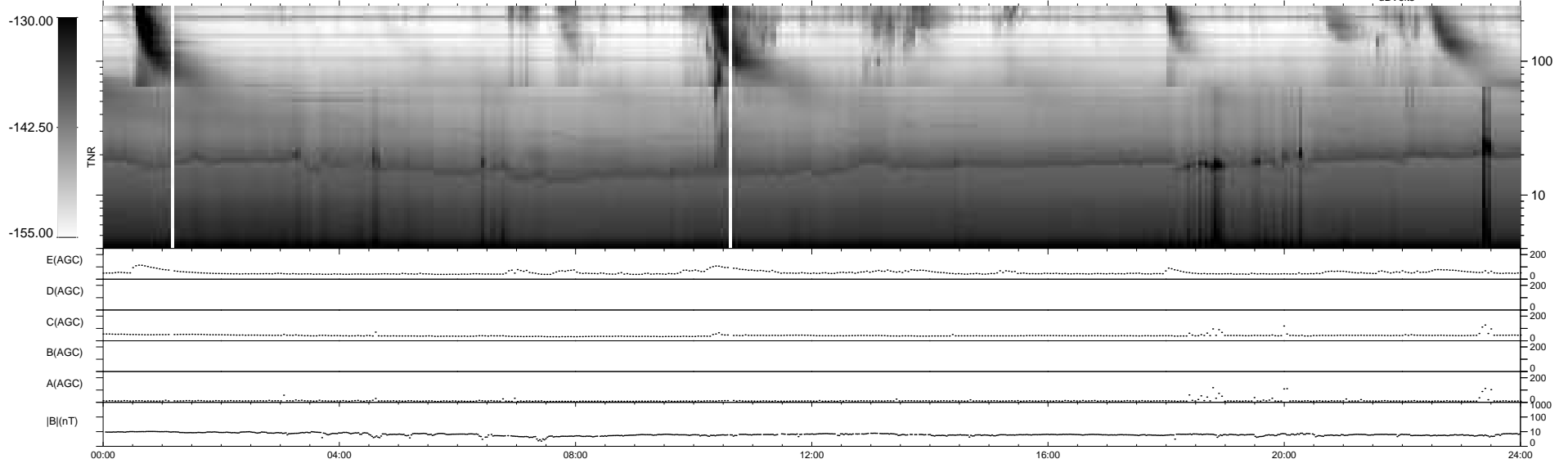
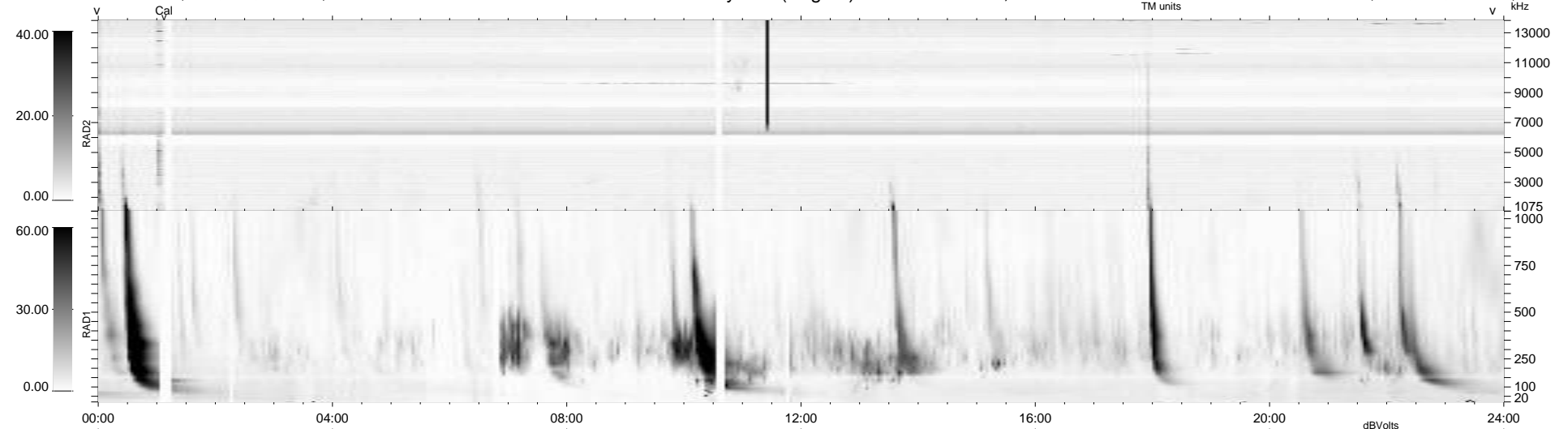
27 bad + 913 good MF/940MF projected (97%) - 0 missing MFs  
 Avg interval = 180 secs  
 Re = 197.03 (194.73, 25.03, -16.62 GSE)

windlib 2.0b

LZ version = v01

### WIND/WAVES Summary Plot (Page 1) for 22-JAN-2014, DOY = 22

DAILY 2014-01-23 16:46:13  
 Re = 197.77 (194.99, 28.62, -16.55 GSE)



```

RAD2
Antenna Ey .....
Mode LIN(1) .....
SUM/SEP SEP .....
Toggle OFF .....

RAD1
Antenna Ex .....
Mode LIS(2,4) .....
SUM/SEP SUM .....
Toggle OFF .....

TNR
Antenna ExEy .....
Mode A-32 .....
Sweep ACE .....
  
```