

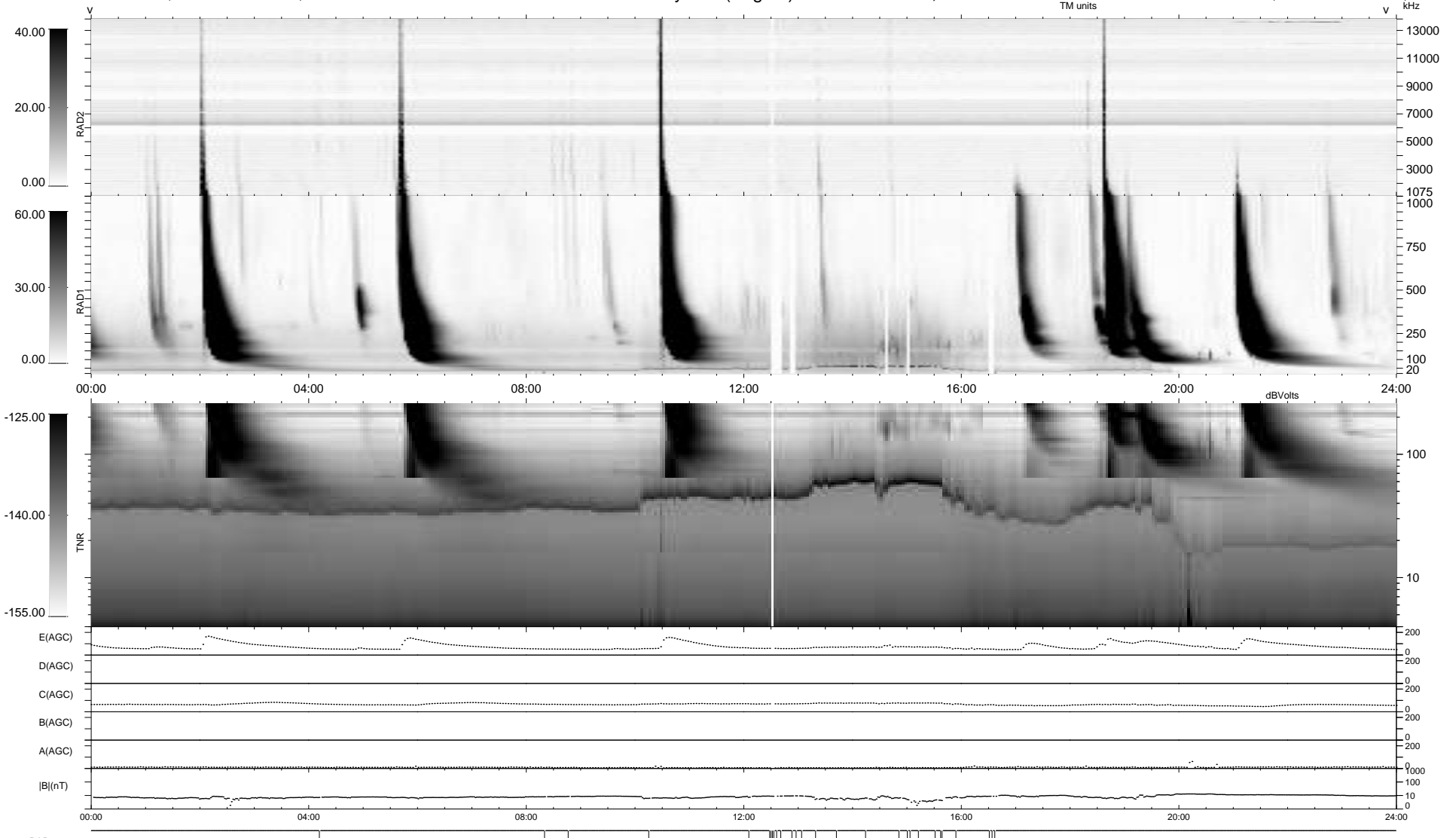
28 bad + 911 good MF/939MF projected (97%) - 0 missing MFs  
 Avg interval = 180 secs  
 Re = 196.37 (194.49, 21.41, -16.65 GSE)

windlib 2.0b

LZ version = v01

### WIND/WAVES Summary Plot (Page 1) for 21-JAN-2014, DOY = 21

DAILY 2014-01-22 17:46:03  
 Re = 197.02 (194.72, 25.01, -16.62 GSE)



RAD2  
 Antenna Ey .....  
 Mode LIN(1) .....  
 SUM/SEP SEP .....  
 Toggle OFF .....  
 RAD1  
 Antenna Ex .....  
 Mode LIS(2,4) .....  
 SUM/SEP SUM .....  
 Toggle OFF .....  
 TNR  
 Antenna ExEy .....  
 Mode A-32 .....  
 Sweep ACE .....