

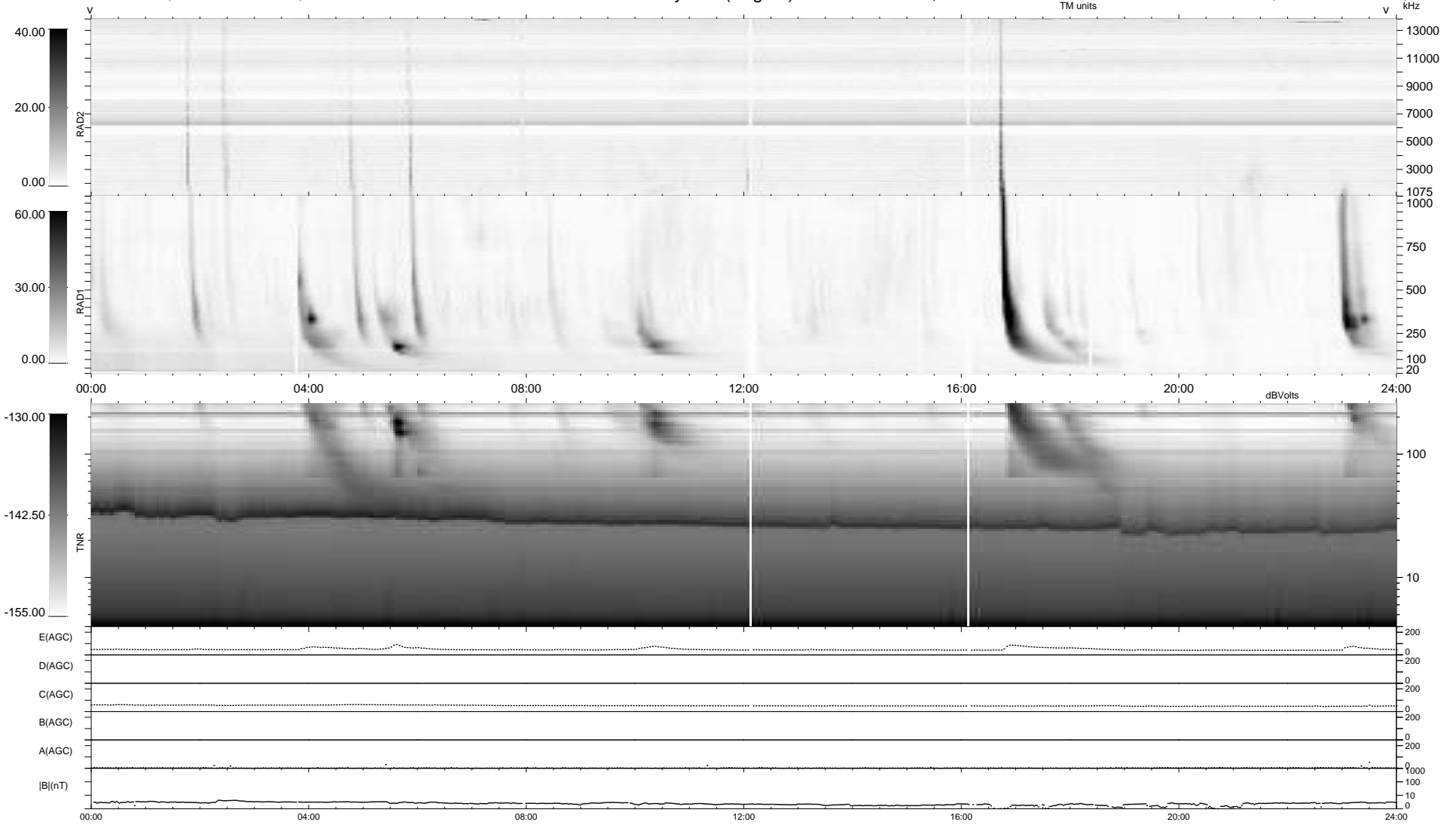
28 bad + 911 good MF/939MF projected (97%) - 0 missing MFs  
 Avg interval = 180 secs  
 Re = 195.36 (194.13, 14.13, -16.63 GSE)

windlib 2.0b

LZ version = v01

### WIND/WAVES Summary Plot (Page 1) for 19-JAN-2014, DOY = 19

DAILY 2014-01-20 09:46:04  
 Re = 195.81 (194.29, 17.75, -16.66 GSE)



RAD2  
 Antenna Ey .....  
 Mode LIN(1) .....  
 SUM/SEP SEP .....  
 Toggle OFF .....  
 RAD1  
 Antenna Ex .....  
 Mode LIS(2,4) .....  
 SUM/SEP SUM .....  
 Toggle OFF .....  
 TNR  
 Antenna ExEy .....  
 Mode A-32 .....  
 Sweep ACE .....