

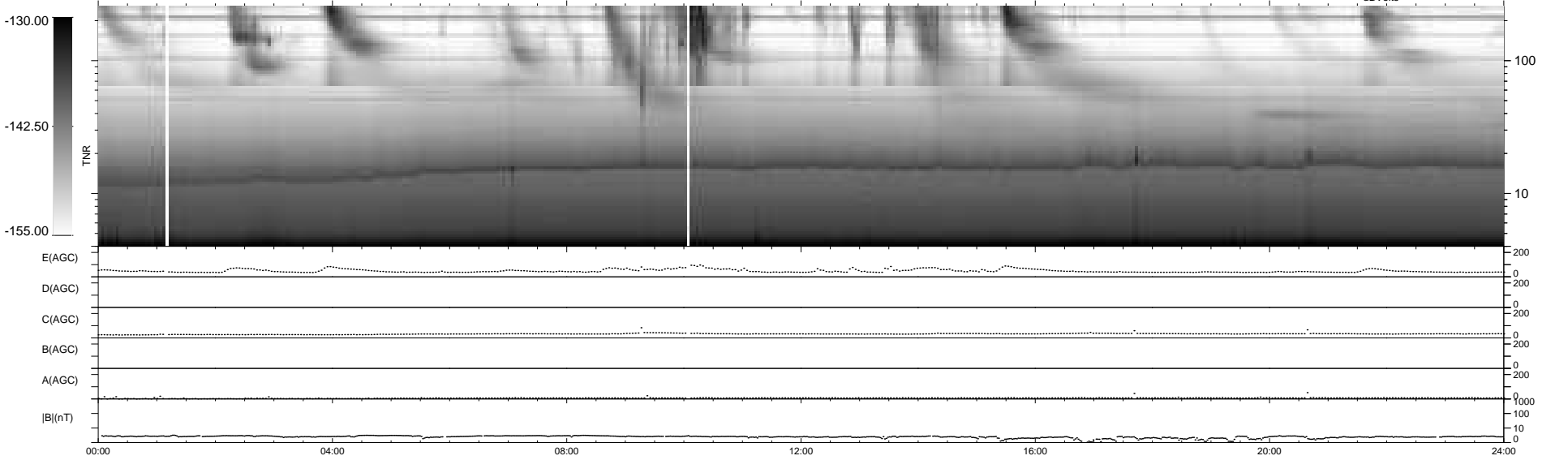
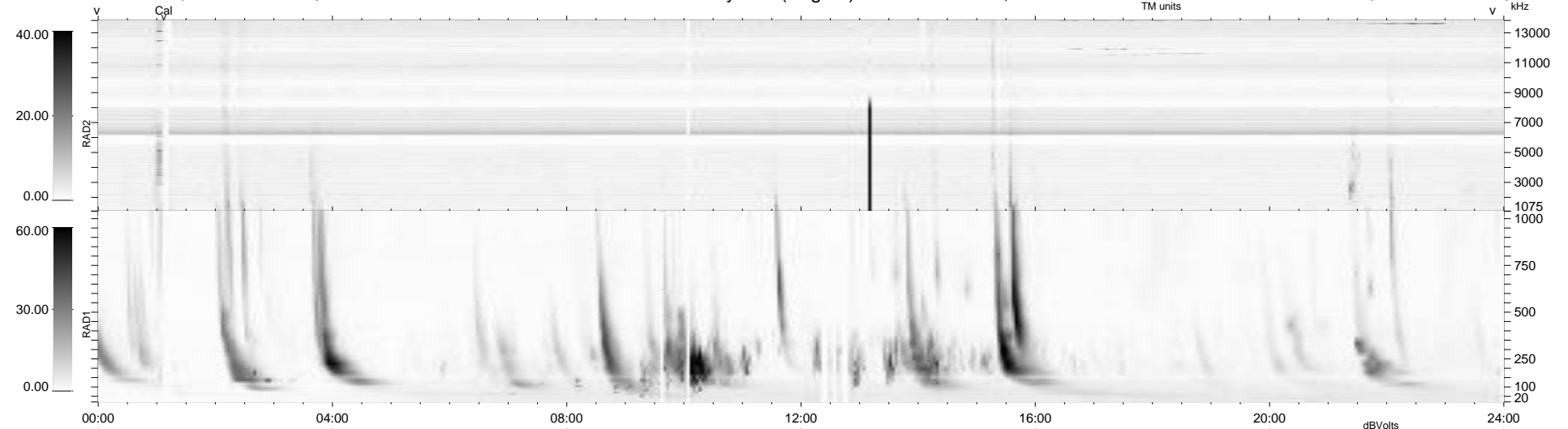
32 bad + 907 good MF/939MF projected (96%) - 0 missing MFs
 Avg interval = 180 secs
 Re = 194.62 (193.91, 3.14, -16.34 GSE)

windlib 2.0b

LZ version = v01

WIND/WAVES Summary Plot (Page 1) for 16-JAN-2014, DOY = 16

DAILY 2014-01-17 23:46:04
 Re = 194.76 (193.94, 6.78, -16.47 GSE)



```

RAD2
Antenna Ey .....
Mode LIN(1) .....
SUM/SEP SEP .....
Toggle OFF .....

RAD1
Antenna Ex .....
Mode LIS(2,4) .....
SUM/SEP SUM .....
Toggle OFF .....

TNR
Antenna ExEy .....
Mode A-32 .....
Sweep ACE .....
  
```