

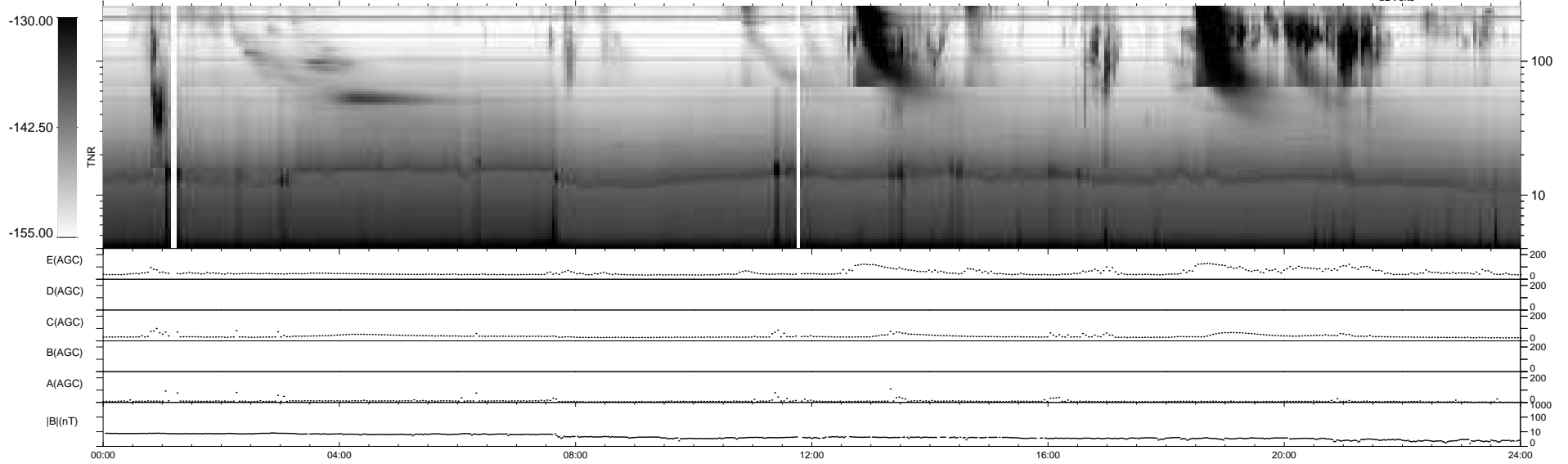
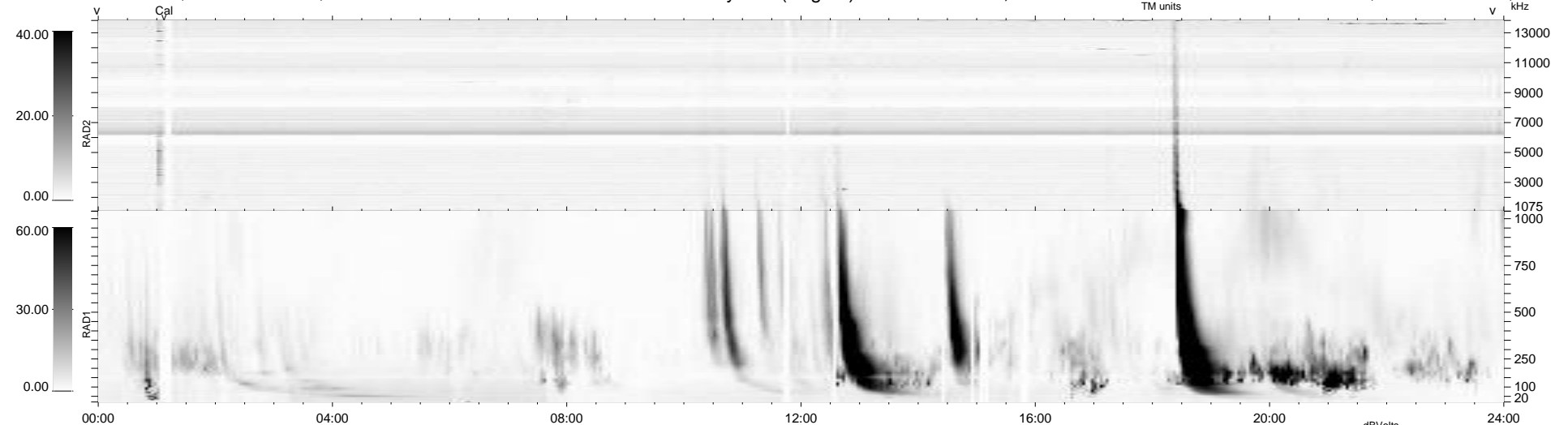
27 bad + 913 good MF/940MF projected (97%) - 0 missing MFs
 Avg interval = 180 secs
 Re = 194.68 (193.98, -4.22, -15.98 GSE)

windlib 2.0b

LZ version = v01

WIND/WAVES Summary Plot (Page 1) for 14-JAN-2014, DOY = 14

DAILY 2014-01-17 09:46:04
 Re = 194.60 (193.93, -0.56, -16.17 GSE)



RAD2
 Antenna Ey
 Mode LIN(1)
 SUM/SEP SEP
 Toggle OFF

RAD1
 Antenna Ex
 Mode LIS(2,4)
 SUM/SEP SUM
 Toggle OFF

TNR
 Antenna ExEy
 Mode A-32
 Sweep ACE