

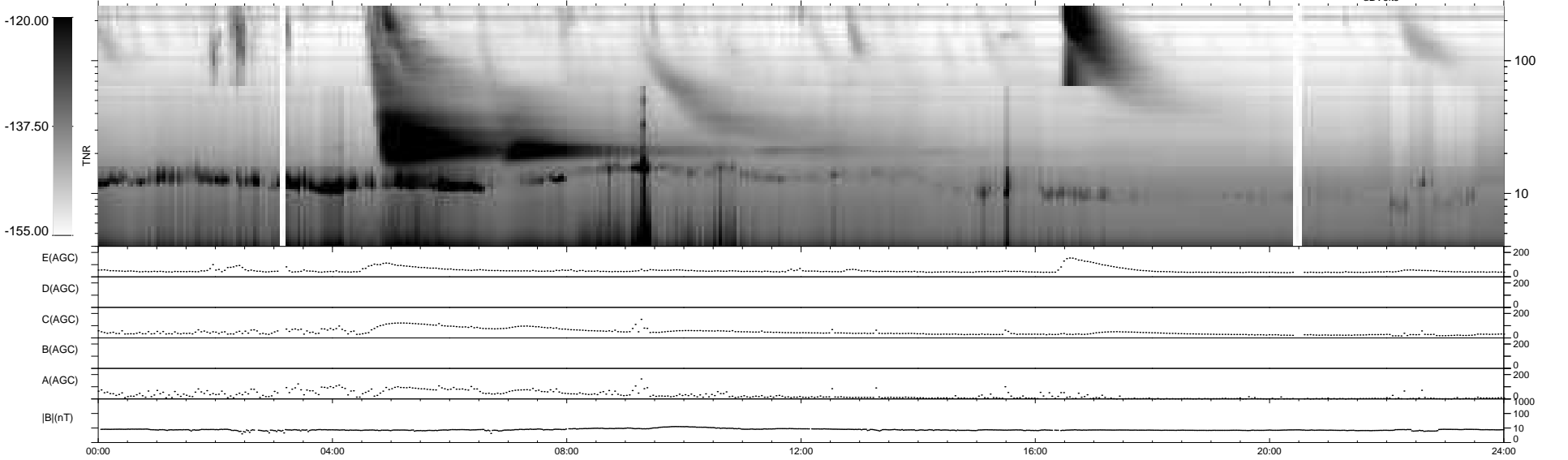
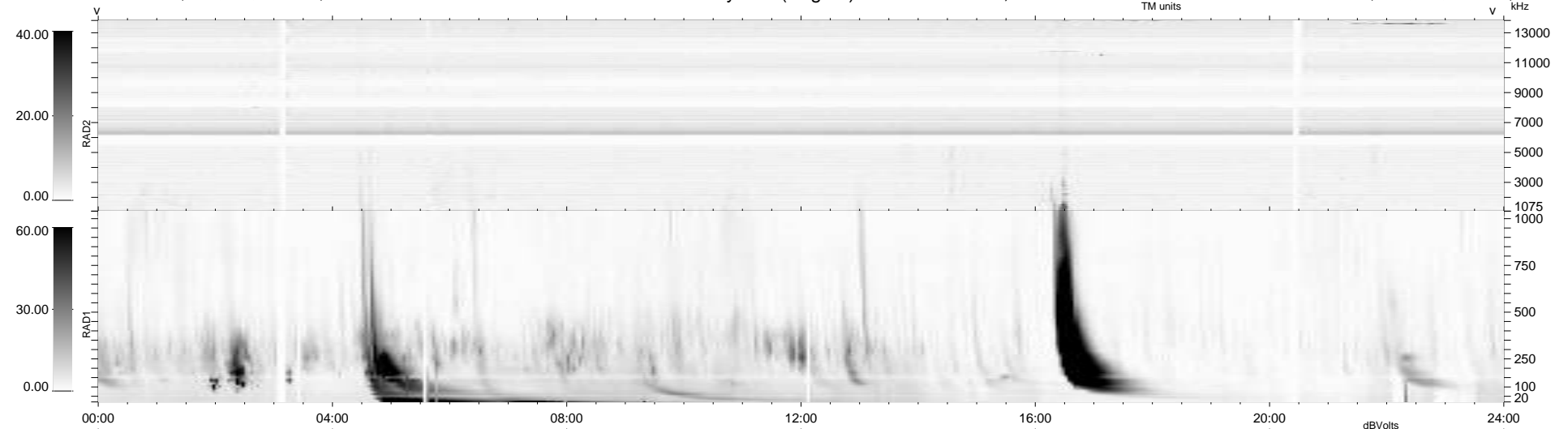
34 bad + 905 good MF/939MF projected (96%) - 0 missing MFs  
 Avg interval = 180 secs  
 Re = -194.88 (194.08, -7.90, -15.75 GSE)

windlib 2.0b

LZ version = v01

### WIND/WAVES Summary Plot (Page 1) for 13-JAN-2014, DOY = 13

DAILY 2014-01-15 00:46:03  
 Re = 194.68 (193.98, -4.24, -15.97 GSE)



```

RAD2
Antenna Ey .....
Mode LIN(1) .....
SUM/SEP SEP .....
Toggle OFF .....

RAD1
Antenna Ex .....
Mode LIS(2,4) .....
SUM/SEP SUM .....
Toggle OFF .....

TNR
Antenna ExEy .....
Mode A-32 .....
Sweep ACE .....
  
```