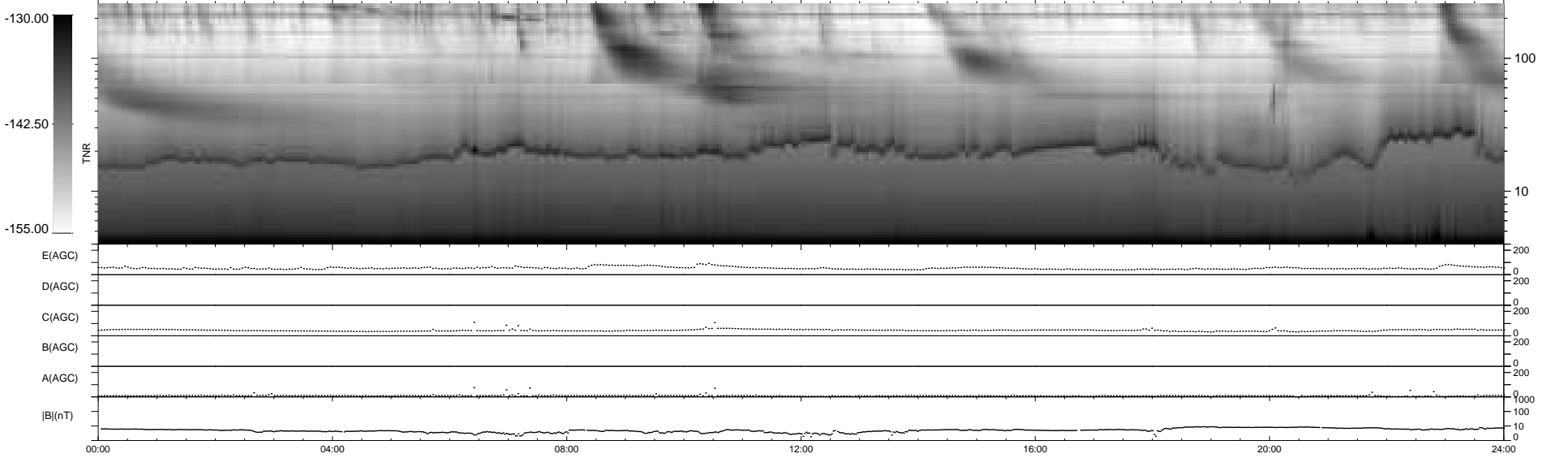
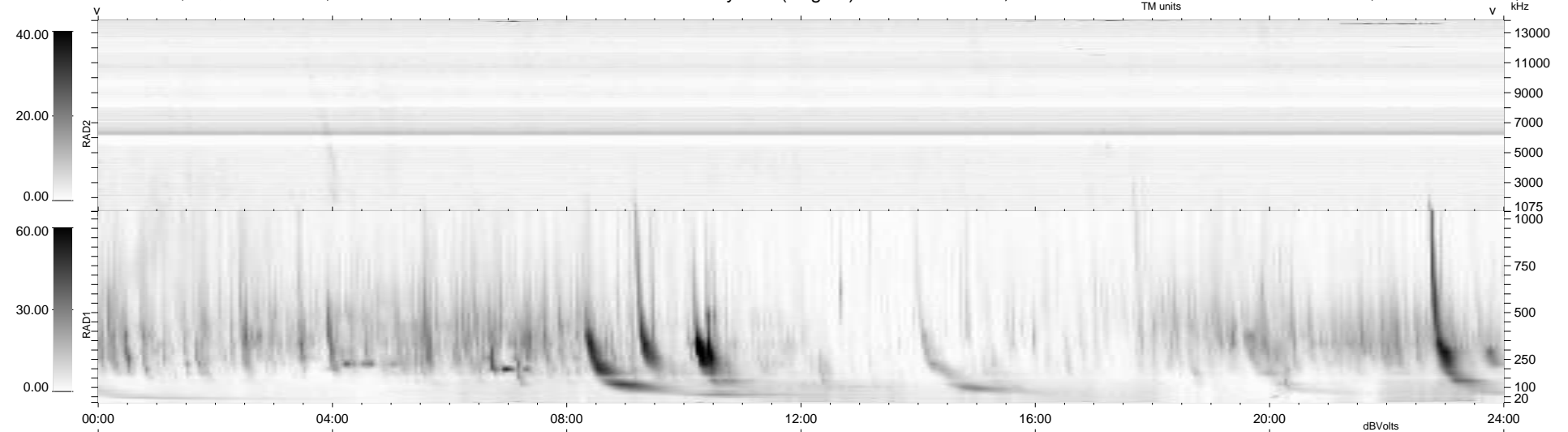


8 bad + 931 good MF/939MF projected (99%) - 0 missing MFs
 Avg interval = 180 secs
 Re = 195.58 (194.39, -15.28, -15.19 GSE)

windlib 2.0b LZ version = v01
 DAILY 2014-01-12 15:46:05
 Re = 195.18 (194.22, -11.62, -15.48 GSE)

WIND/WAVES Summary Plot (Page 1) for 11-JAN-2014, DOY = 11



RAD2
 Antenna Ey
 Mode LIN(1)
 SUM/SEP SEP
 Toggle OFF

RAD1
 Antenna Ex
 Mode LIS(2,4)
 SUM/SEP SUM
 Toggle OFF

TNR
 Antenna ExEy
 Mode A-32
 Sweep ACE