

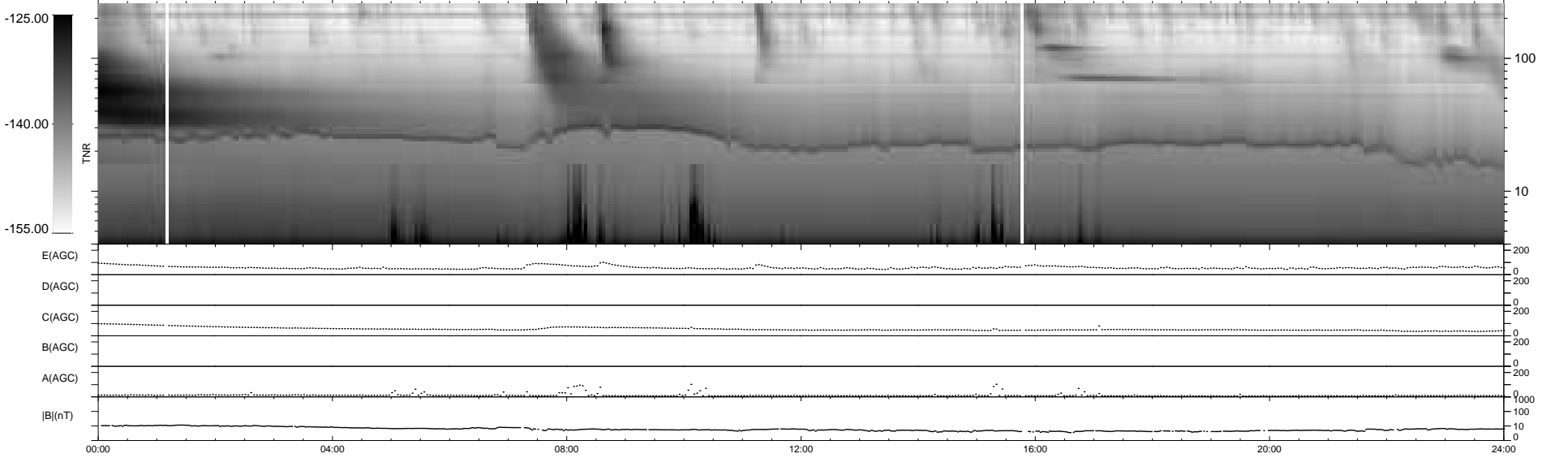
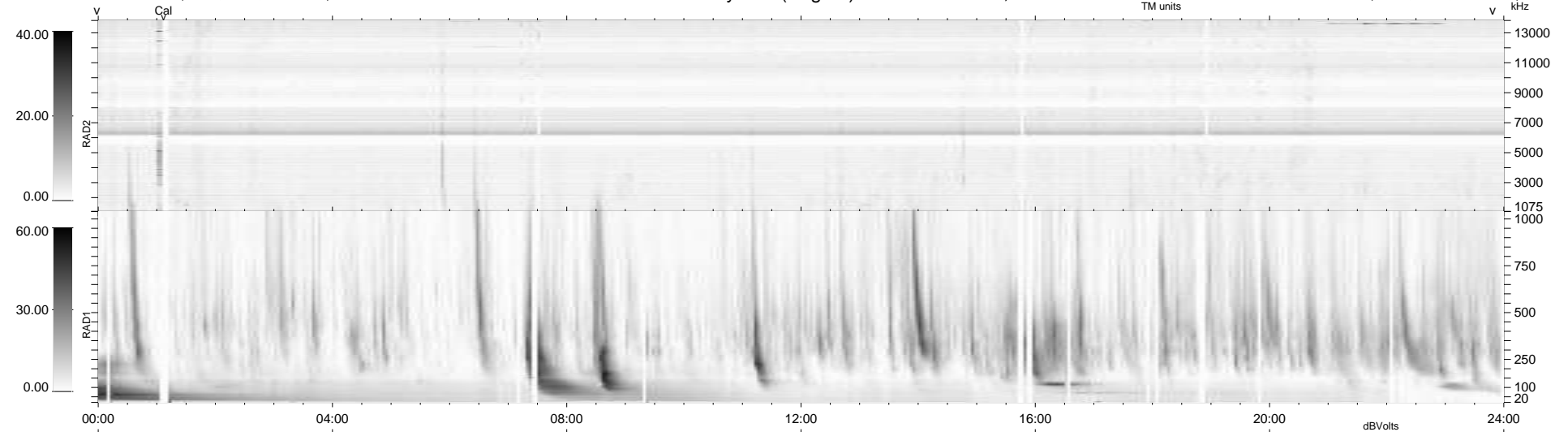
33 bad + 906 good MF/939MF projected (96%) - 0 missing MFs  
 Avg interval = 180 secs  
 Re = 196.08 (194.60, -18.97, -14.87 GSE)

windlib 2.0b

LZ version = v02

### WIND/WAVES Summary Plot (Page 1) for 10-JAN-2014, DOY = 10

DAILY 2014-01-13 10:46:03  
 Re = 195.58 (194.39, -15.30, -15.19 GSE)



RAD2  
 Antenna Ey  
 Mode LIN(1)  
 SUM/SEP SEP  
 Toggle OFF

RAD1  
 Antenna Ex  
 Mode LIS(2,4)  
 SUM/SEP SUM  
 Toggle OFF

TNR  
 Antenna ExEy  
 Mode A-32  
 Sweep ACE