

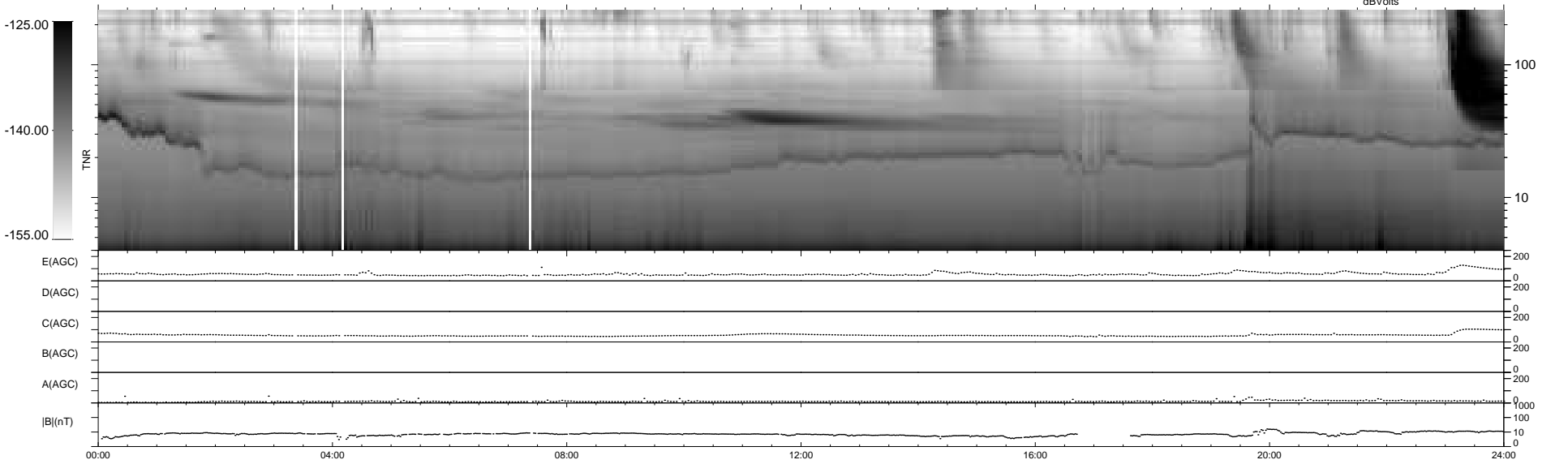
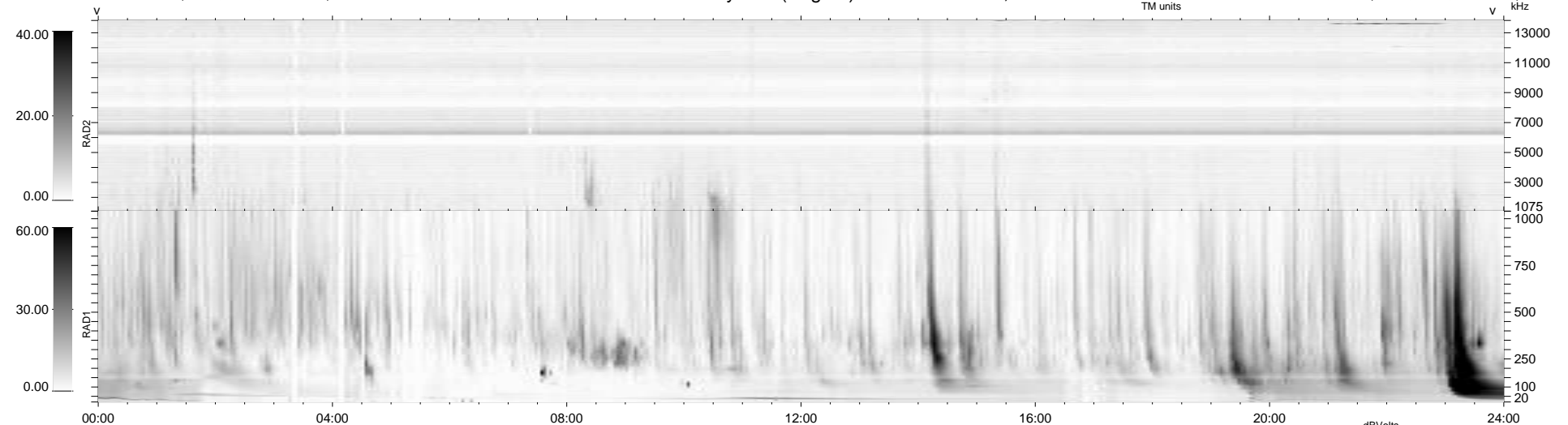
30 bad + 909 good MF/939MF projected (96%) - 0 missing MFs  
 Avg interval = 180 secs  
 Re = -196.68 (194.84, -22.65, -14.52 GSE)

windlib 2.0b

LZ version = v01

### WIND/WAVES Summary Plot (Page 1) for 09-JAN-2014, DOY = 9

DAILY 2014-01-10 04:46:03  
 Re = 196.09 (194.60, -18.99, -14.87 GSE)



```

RAD2
Antenna Ey .....
Mode LIN(1) .....
SUM/SEP SEP .....
Toggle OFF .....

RAD1
Antenna Ex .....
Mode LIS(2,4) .....
SUM/SEP SUM .....
Toggle OFF .....

TNR
Antenna ExEy .....
Mode A-32 .....
Sweep ACE .....
  
```