

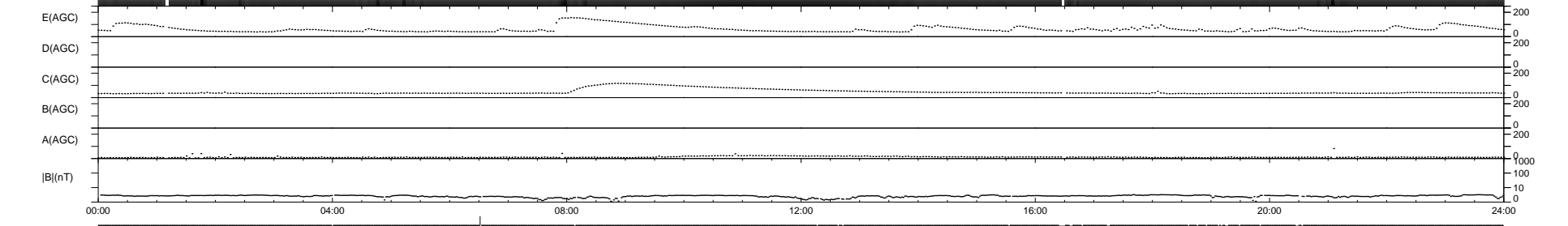
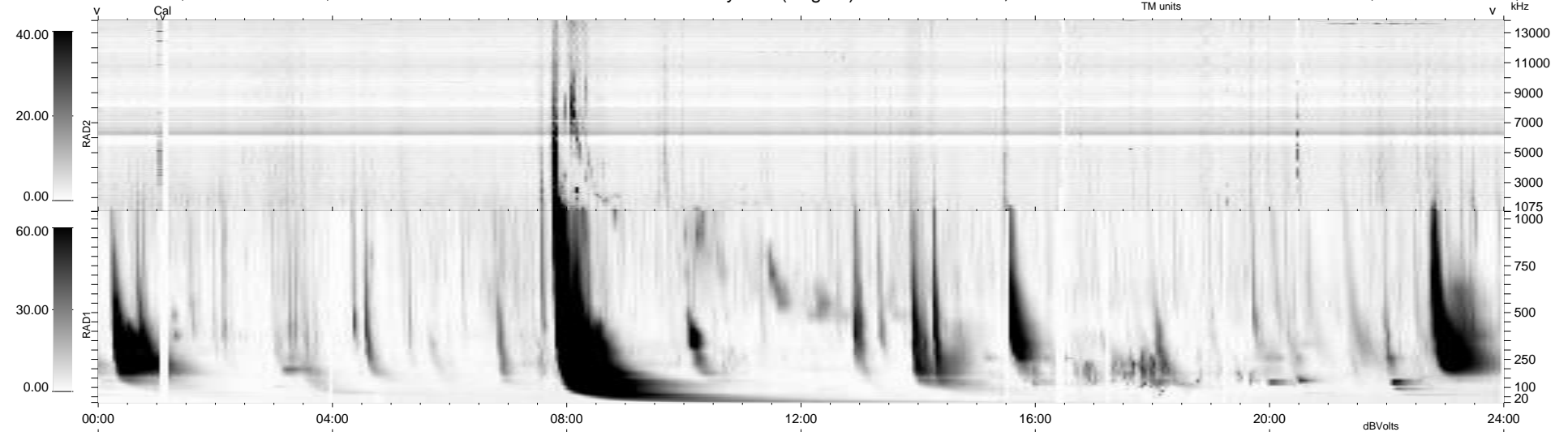
27 bad + 911 good MF/939MF projected (97%) - 1 missing MF
 Avg interval = 180 secs
 Re = - 199.00 (195.69, -33.64, -13.31 GSE)

windlib 2.0b

LZ version = v02

WIND/WAVES Summary Plot (Page 1) for 06-JAN-2014, DOY = 6

DAILY 2014-01-09 15:46:03
 Re = 198.16 (195.39, -30.02, -13.73 GSE)



RAD2
 Antenna Ey
 Mode LIN(1)
 SUM/SEP SEP
 Toggle OFF
 RAD1
 Antenna Ex
 Mode LIS(2,4)
 SUM/SEP SUM
 Toggle OFF
 TNR
 Antenna ExEy
 Mode A-32
 Sweep ACE