

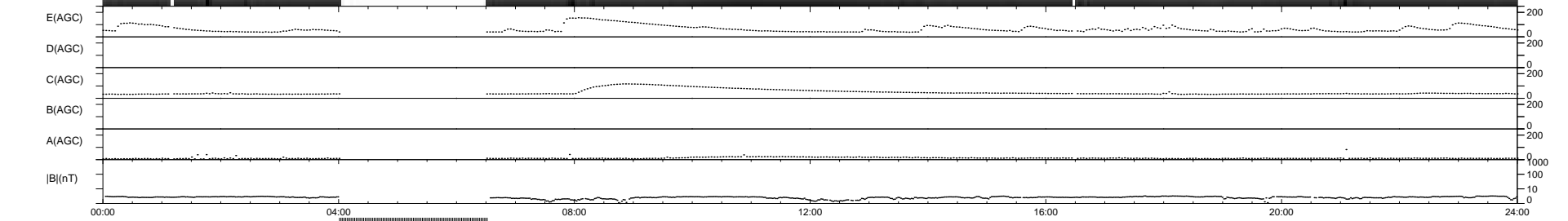
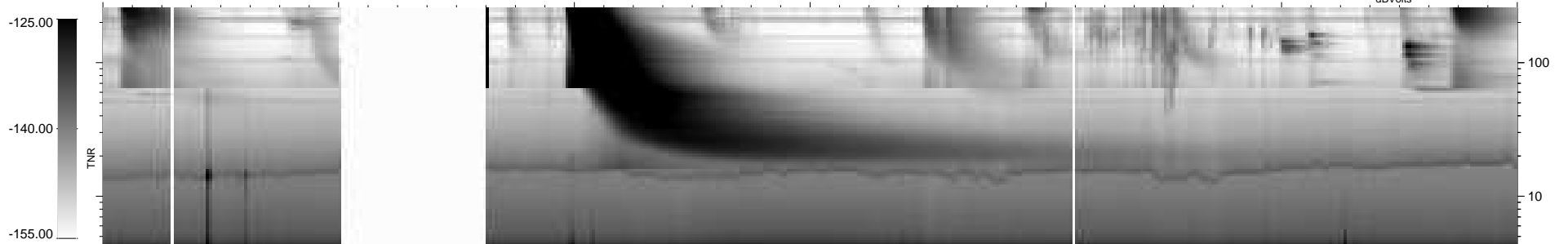
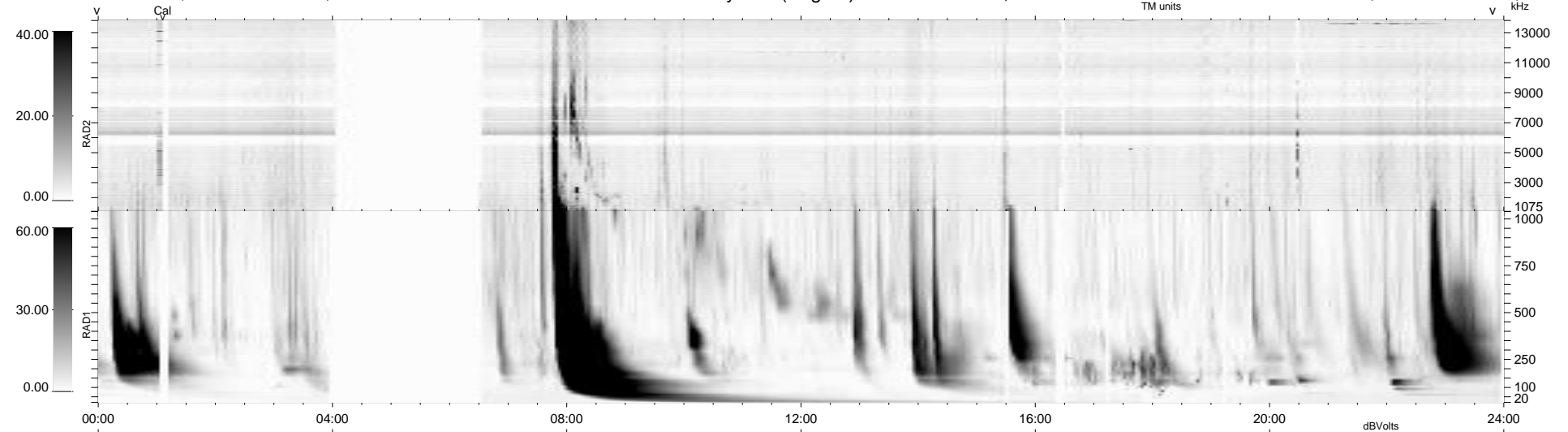
27 bad + 813 good MF/939MF projected (86%) - 99 missing MFs
Avg interval = 180 secs
Re = - 199.00 (195.69, -33.64, -13.31 GSE)

windlib 2.0b

LZ version = v01

WIND/WAVES Summary Plot (Page 1) for 06-JAN-2014, DOY = 6

DAILY 2014-01-07 20:46:02
Re = 198.16 (195.39, -30.02, -13.73 GSE)



RAD2
Antenna Ey
Mode LIN(1)
SUM/SEP SEP
Toggle OFF
RAD1
Antenna Ex
Mode LIS(2,4)
SUM/SEP SUM
Toggle OFF
TNR
Antenna ExEy
Mode A-32
Sweep ACE