

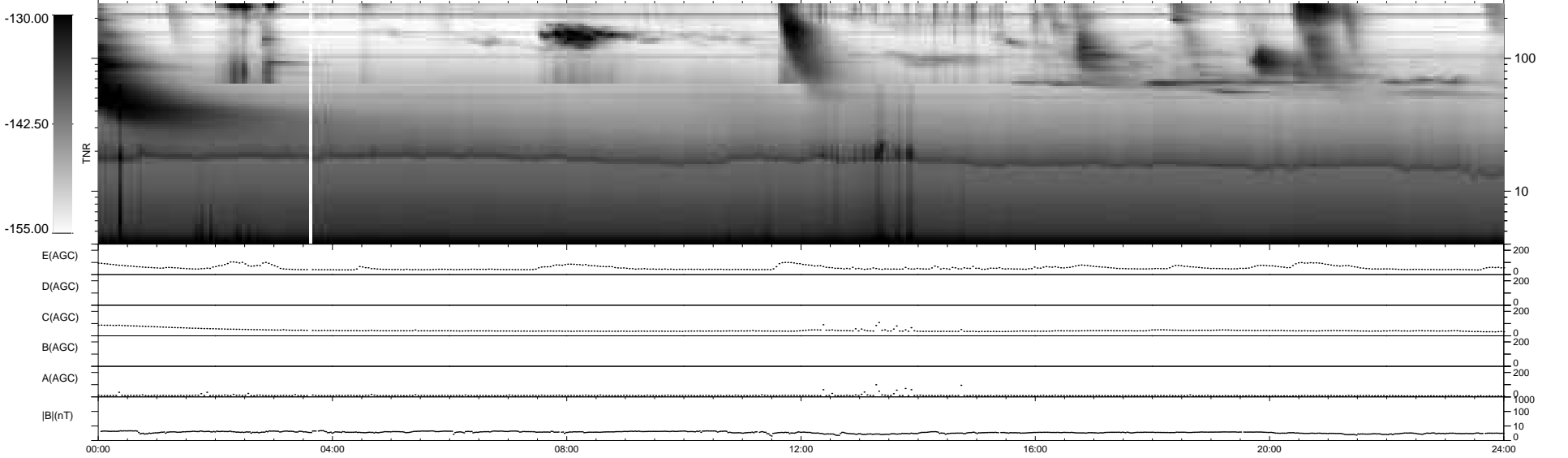
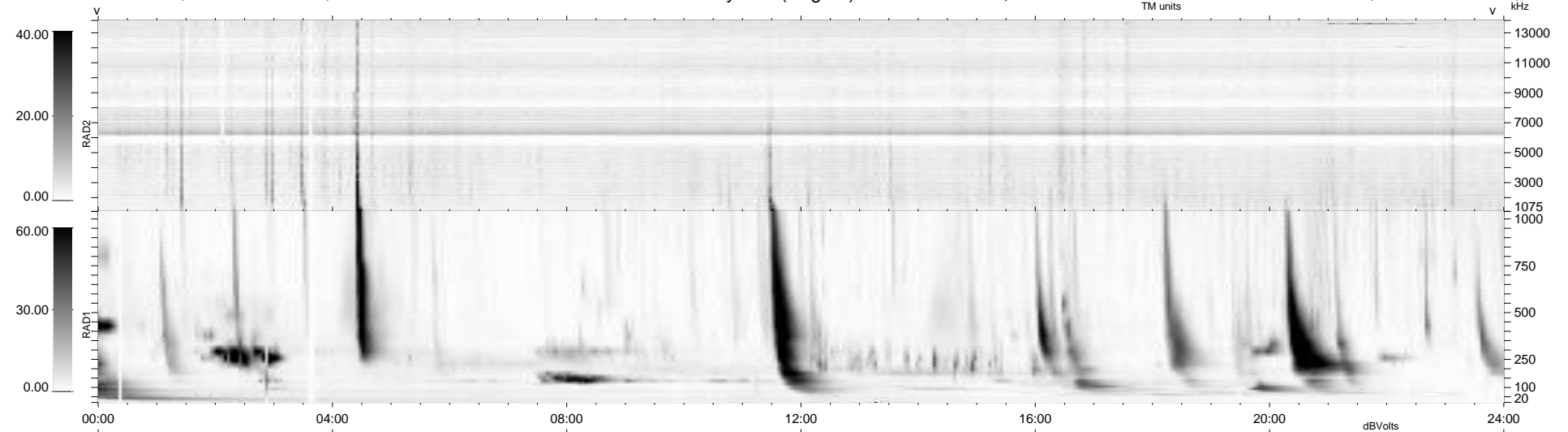
15 bad + 924 good MF/939MF projected (98%) - 0 missing MFs
 Avg interval = 180 secs
 Re = 199.92 (196.00, -37.26, -12.86 GSE)

windlib 2.0b

LZ version = v01

WIND/WAVES Summary Plot (Page 1) for 05-JAN-2014, DOY = 5

DAILY 2014-01-06 04:46:04
 Re = 199.01 (195.69, -33.66, -13.31 GSE)



E(AGC)	0	200
D(AGC)	0	200
C(AGC)	0	200
B(AGC)	0	200
A(AGC)	0	200
B (nT)	0	1000
	0	100
	0	10
	0	0

RAD2	
Antenna	Ey
Mode	LIN(1)
SUM/SEP	SEP
Toggle	OFF
RAD1	
Antenna	Ex
Mode	LIS(2,4)
SUM/SEP	SUM
Toggle	OFF
TNR	
Antenna	ExEy
Mode	A-32
Sweep	ACE