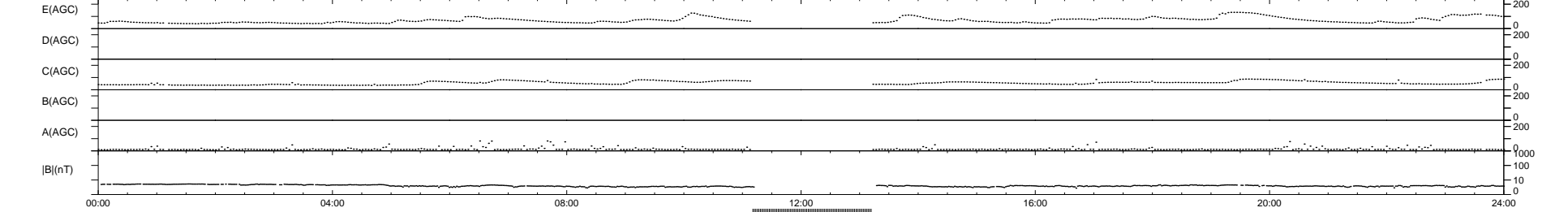
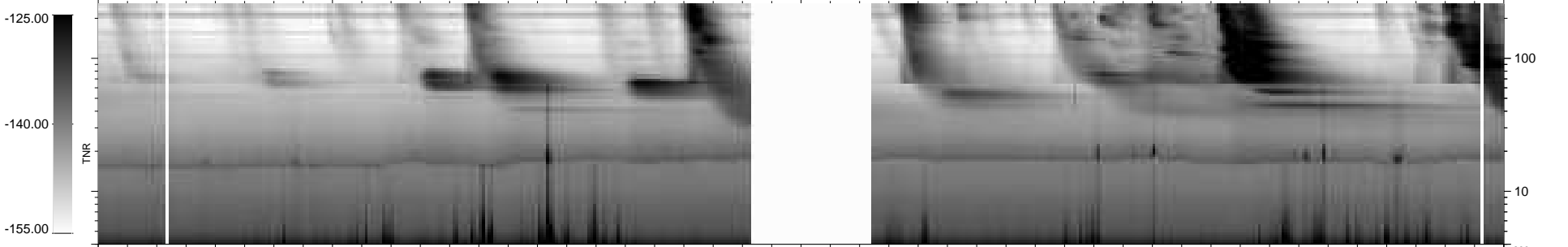
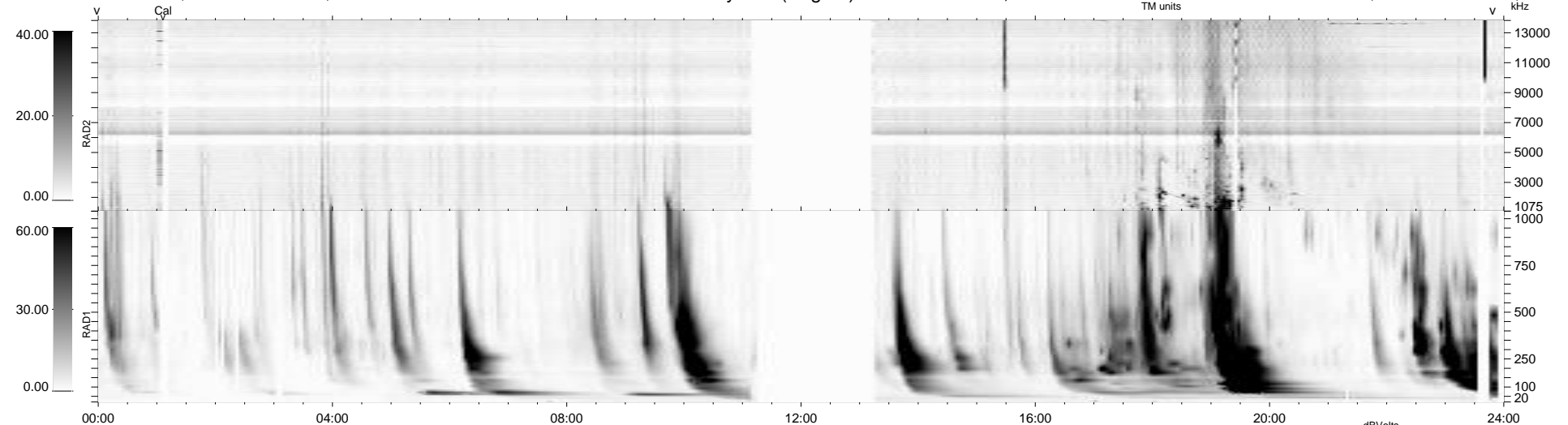


29 bad + 830 good MF/939MF projected (88%) - 80 missing MFs
 Avg interval = 180 secs
 Re = 200.89 (196.31, -40.85, -12.39 GSE)

windlib 2.0b LZ version = v01
 DAILY 2014-01-05 11:46:03
 Re = 199.93 (196.00, -37.28, -12.86 GSE)

WIND/WAVES Summary Plot (Page 1) for 04-JAN-2014, DOY = 4



RAD2 Antenna Ey
 Mode LIN(1)
 SUM/SEP SEP
 Toggle OFF
 RAD1 Antenna Ex
 Mode LIS(2,4)
 SUM/SEP SUM
 Toggle OFF
 TNR Antenna ExEy
 Mode A-32
 Sweep ACE