

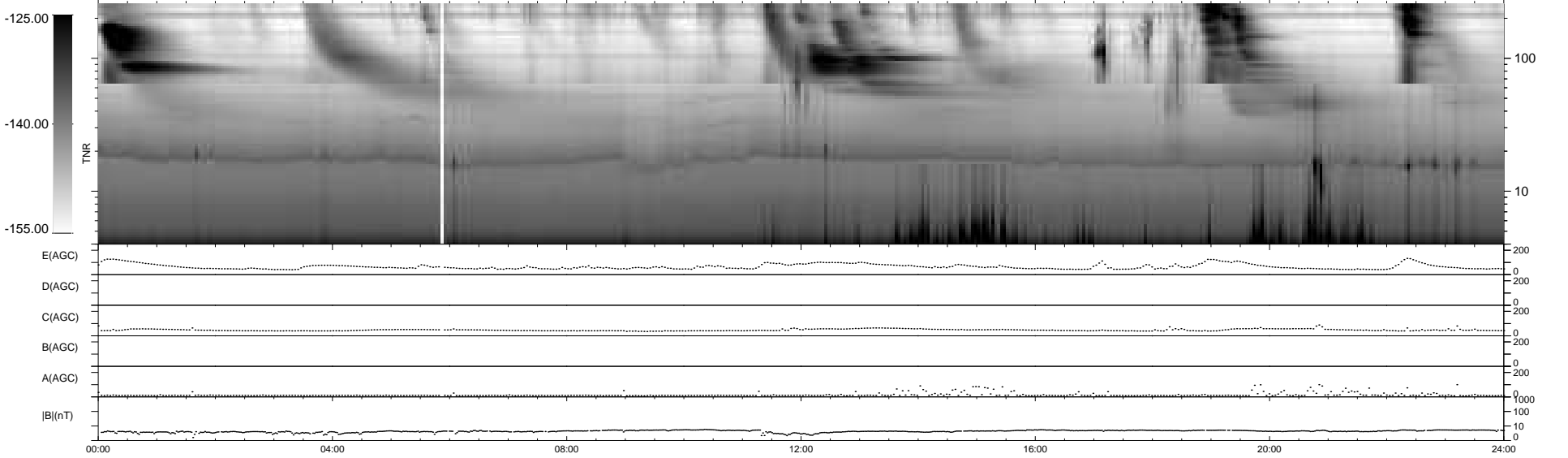
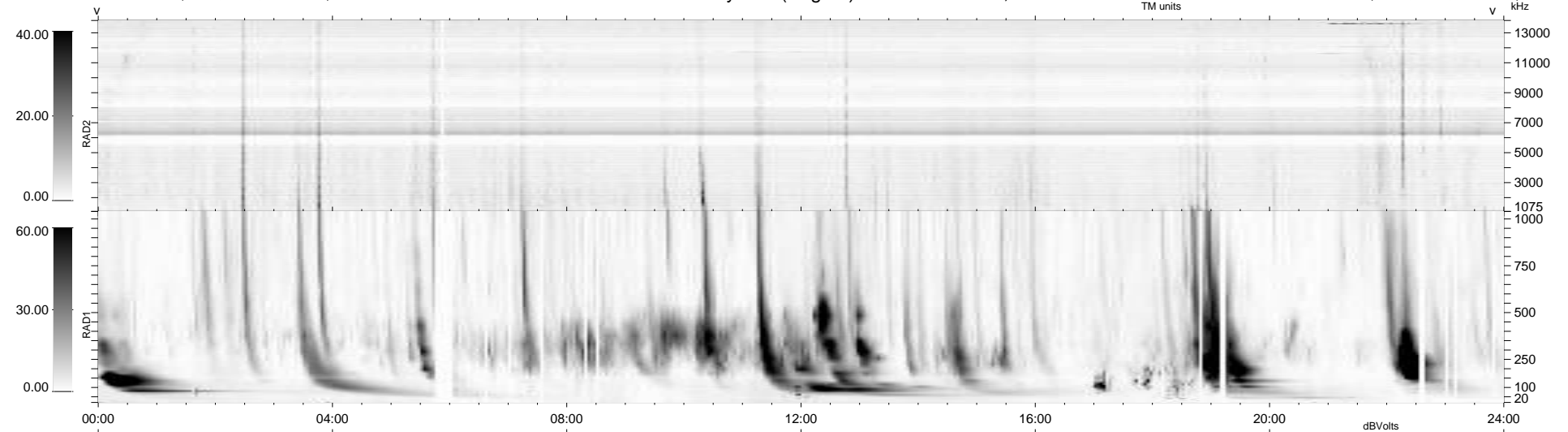
27 bad + 912 good MF/939MF projected (97%) - 0 missing MFs
Avg interval = 180 secs
Re = -201.91 (196.61, -44.39, -11.91 GSE)

windlib 2.0b

LZ version = v01

WIND/WAVES Summary Plot (Page 1) for 03-JAN-2014, DOY = 3

DAILY 2014-01-04 11:46:04
Re = 200.90 (196.31, -40.87, -12.39 GSE)



RAD2
Antenna Ey
Mode LIN(1)
SUM/SEP SEP
Toggle OFF
RAD1
Antenna Ex
Mode LIS(2,4)
SUM/SEP SUM
Toggle OFF
TNR
Antenna ExEy
Mode A-32
Sweep ACE