

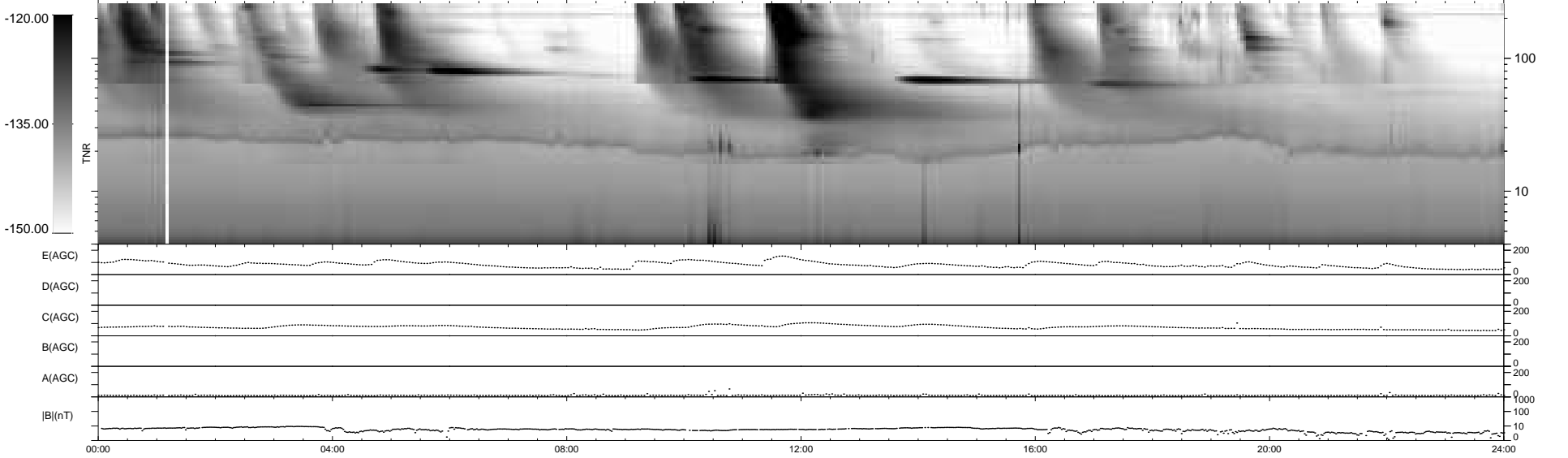
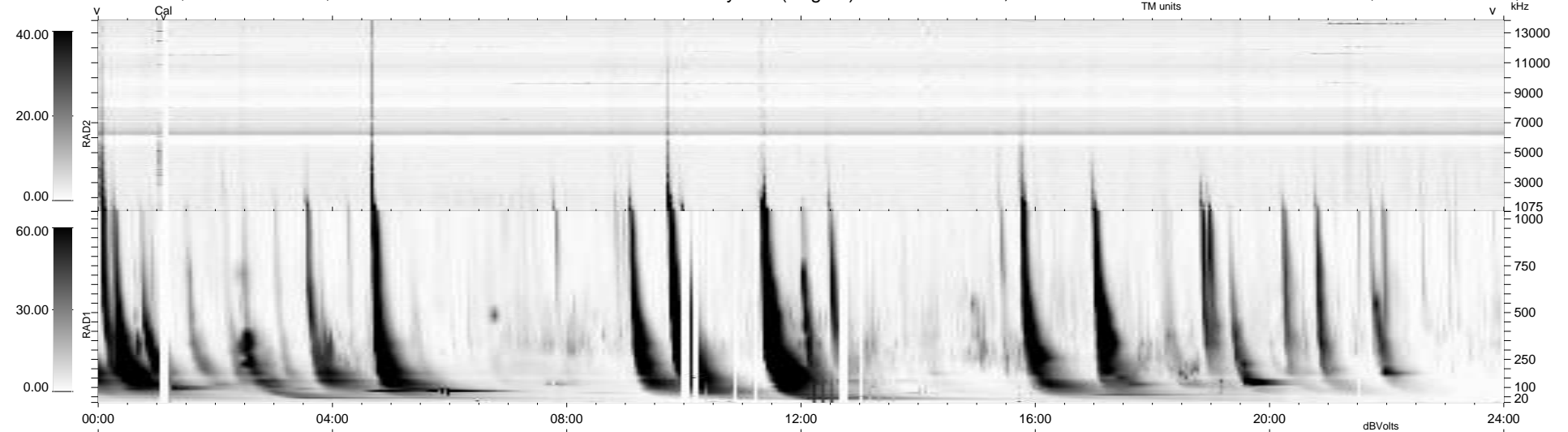
24 bad + 915 good MF/939MF projected (97%) - 0 missing MFs
 Avg interval = 180 secs
 Re = - 202.96 (196.90, -47.87, -11.41 GSE)

windlib 2.0b

LZ version = v01

WIND/WAVES Summary Plot (Page 1) for 02-JAN-2014, DOY = 2

DAILY 2014-01-03 11:46:03
 Re = 201.92 (196.61, -44.41, -11.91 GSE)



RAD2
 Antenna Ey
 Mode LIN(1)
 SUM/SEP SEP
 Toggle OFF
 RAD1
 Antenna Ex
 Mode LIS(2,4)
 SUM/SEP SUM
 Toggle OFF
 TNR
 Antenna ExEy
 Mode A-32
 Sweep ACE