

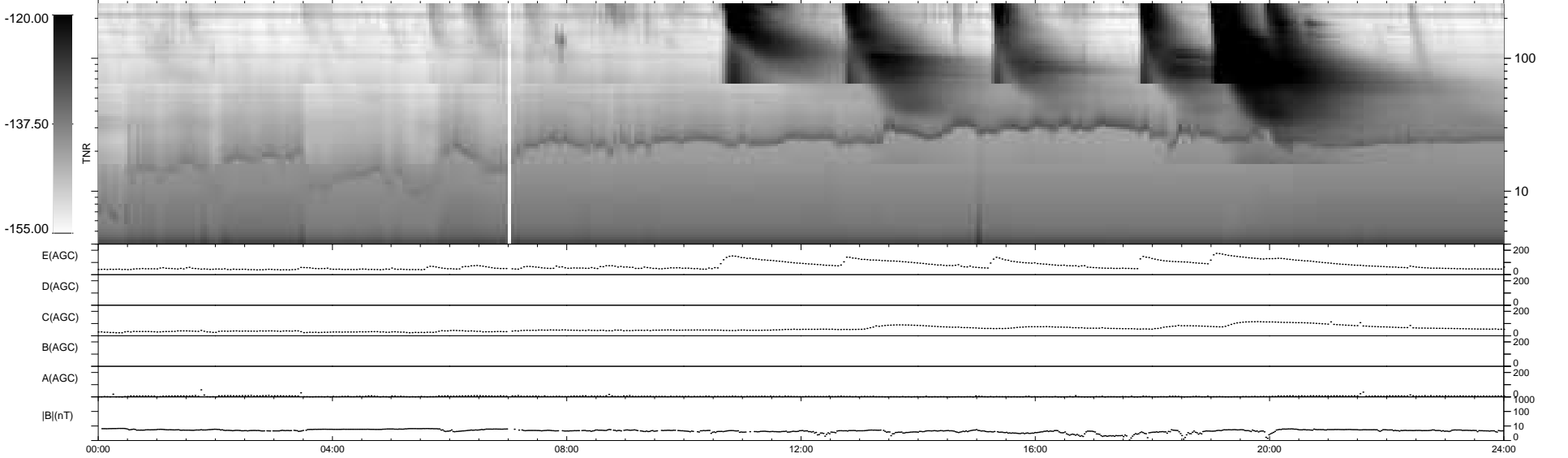
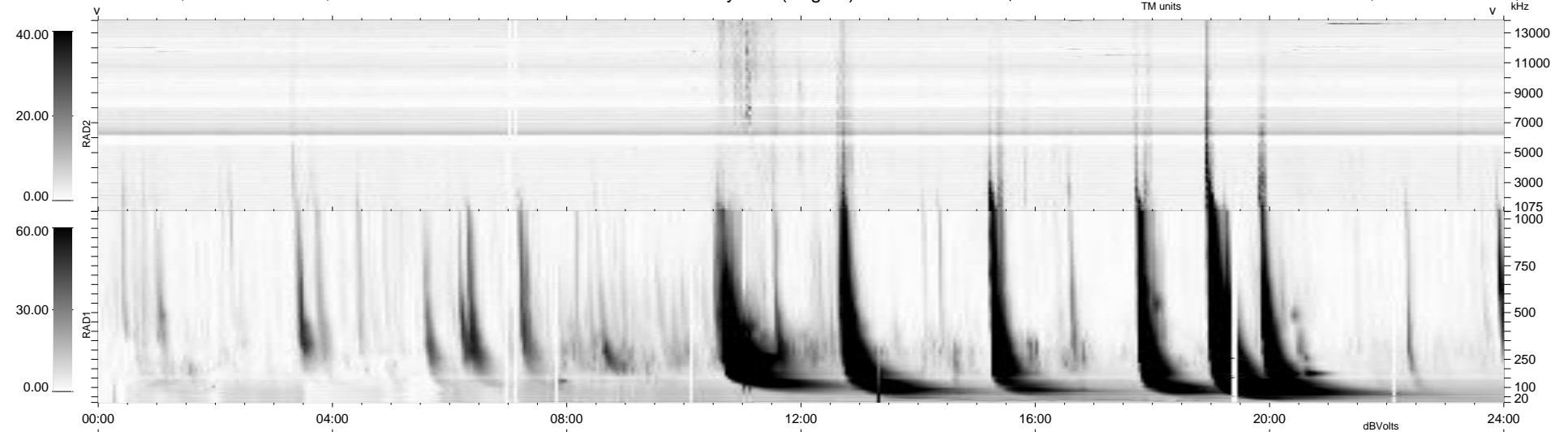
30 bad + 909 good MF/939MF projected (96%) - 0 missing MFs
 Avg interval = 180 secs
 Re = 205.14 (197.46, -54.61, -10.35 GSE)

windlib 2.0b

LZ version = v01

WIND/WAVES Summary Plot (Page 1) for 31-DEC-2013, DOY = 365

DAILY 2014-01-02 10:47:03
 Re = 204.05 (197.19, -51.30, -10.88 GSE)



RAD2 Antenna Ey
 Mode LIN(1)
 SUM/SEP SEP
 Toggle OFF
 RAD1 Antenna Ex
 Mode LIS(2,4)
 SUM/SEP SUM
 Toggle OFF
 TNR Antenna ExEy
 Mode A-32
 Sweep ACE