

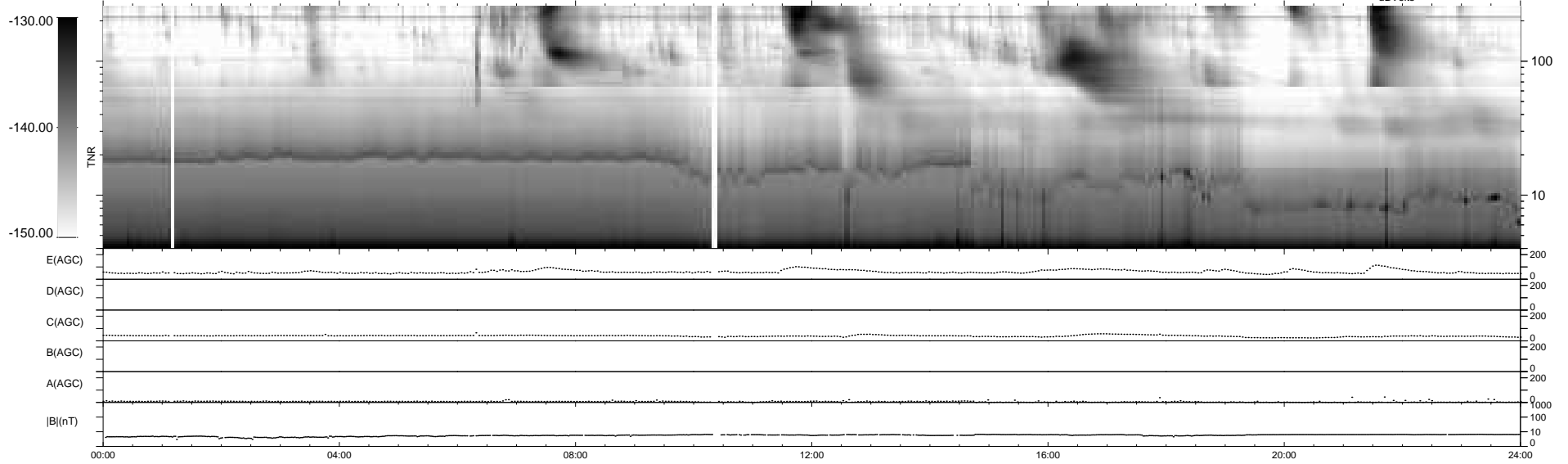
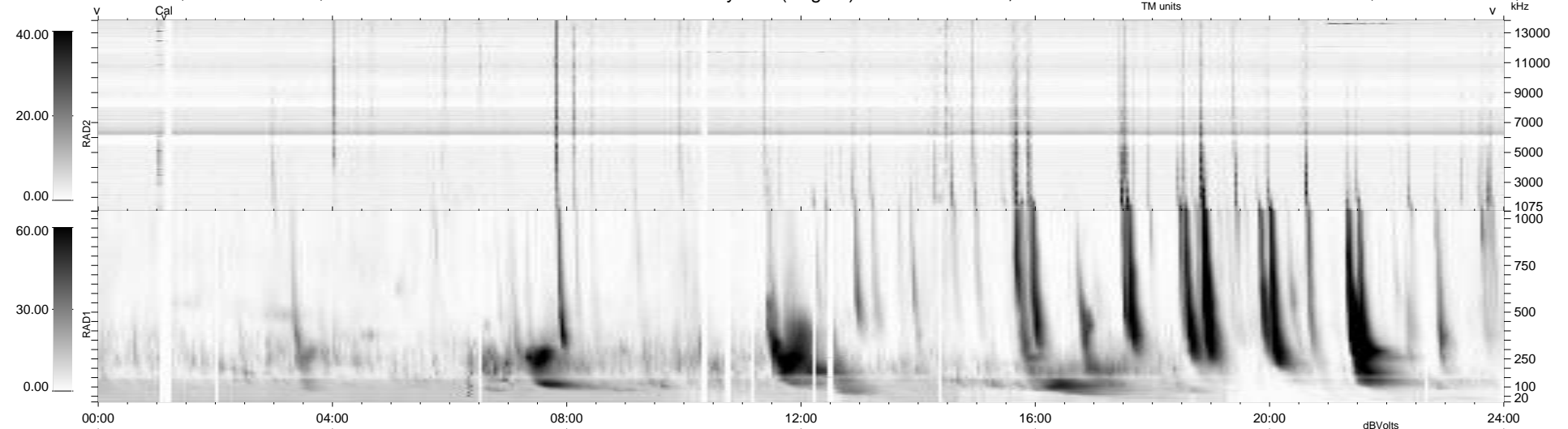
28 bad + 912 good MF/940MF projected (97%) - 0 missing MFs
 Avg interval = 180 secs
 Re = 206.25 (197.73, -57.83, -9.80 GSE)

windlib 2.0b

LZ version = v01

WIND/WAVES Summary Plot (Page 1) for 30-DEC-2013, DOY = 364

DAILY 2013-12-31 23:46:03
 Re = 205.14 (197.47, -54.63, -10.35 GSE)



RAD2
 Antenna Ey
 Mode LIN(1)
 SUM/SEP SEP
 Toggle OFF
 RAD1
 Antenna Ex
 Mode LIS(2,4)
 SUM/SEP SUM
 Toggle OFF
 TNR
 Antenna ExEy
 Mode A-32
 Sweep ACE