

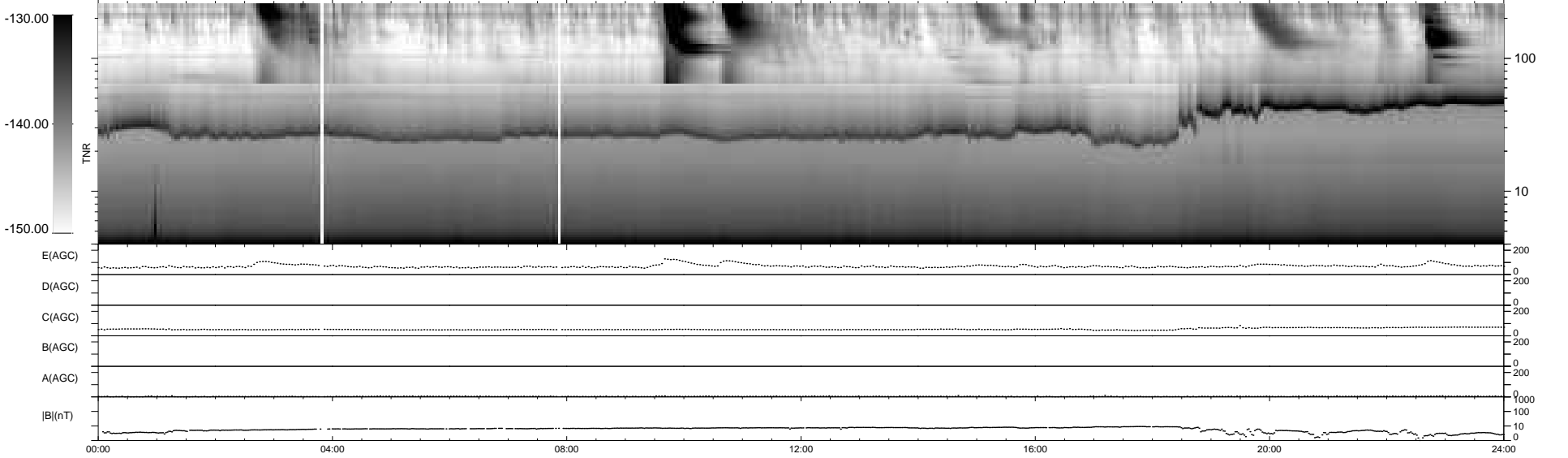
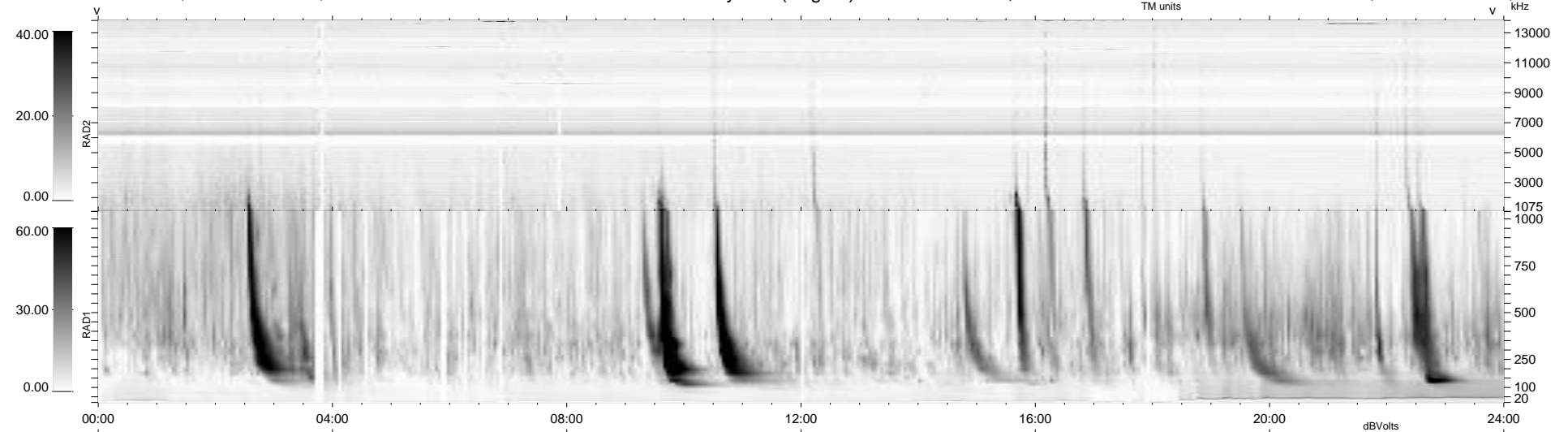
28 bad + 911 good MF/939MF projected (97%) - 0 missing MFs
 Avg interval = 180 secs
 Re = 209.67 (198.57, -66.81, -8.07 GSE)

windlib 2.0b

LZ version = v01

WIND/WAVES Summary Plot (Page 1) for 27-DEC-2013, DOY = 361

DAILY 2013-12-28 21:46:05
 Re = 208.52 (198.28, -63.96, -8.65 GSE)



```

RAD2
Antenna  Ey
Mode     LIN(1)
SUM/SEP  SEP
Toggle   OFF

RAD1
Antenna  Ex
Mode     LIS(2,4)
SUM/SEP  SUM
Toggle   OFF

TNR
Antenna  ExEy
Mode     A-32
Sweep    ACE
  
```