

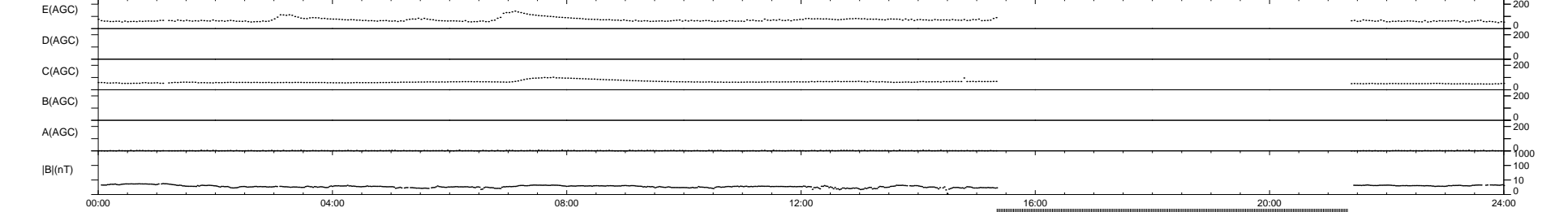
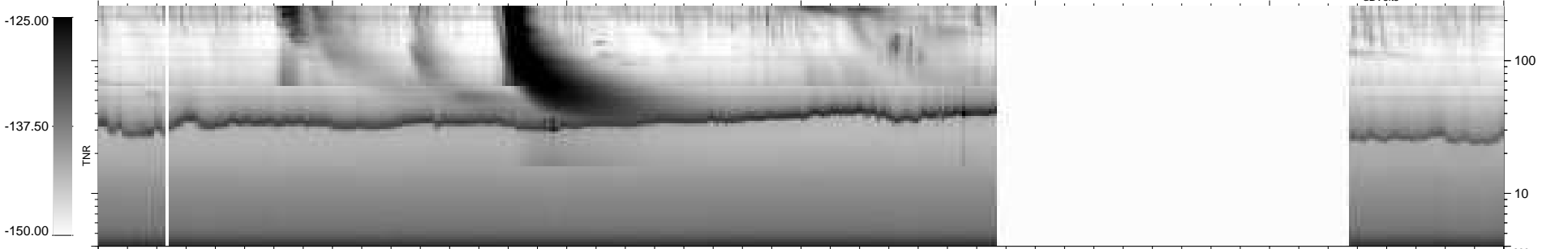
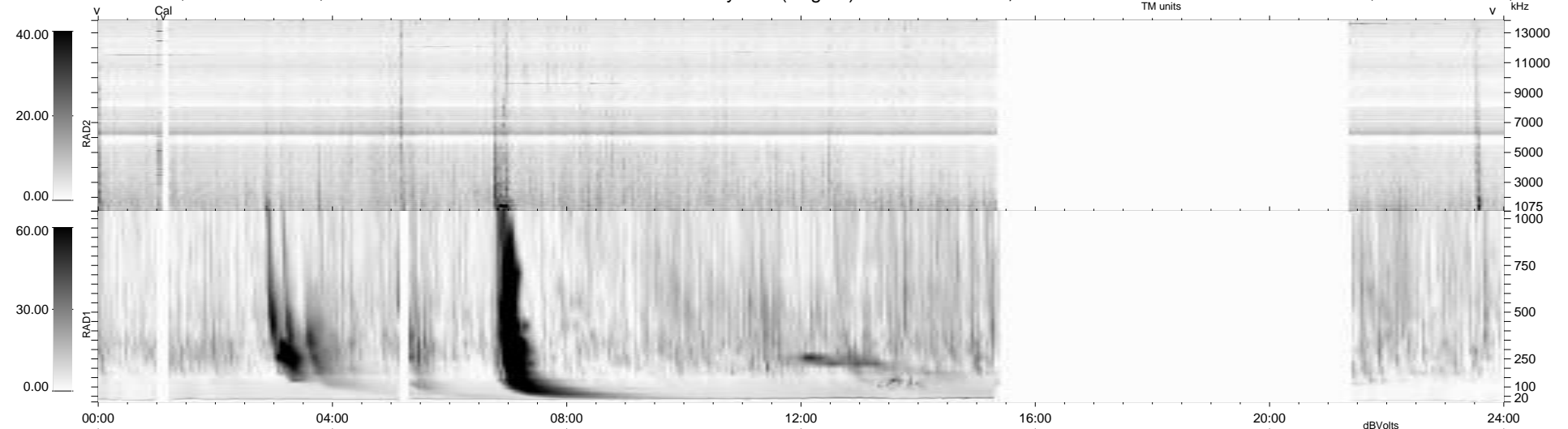
13 bad + 691 good MF/939MF projected (73%) - 235 missing MFs  
 Avg interval = 180 secs  
 Re = -210.83 (198.89, -69.55, -7.46 GSE)

windlib 2.0b

LZ version = v01

### WIND/WAVES Summary Plot (Page 1) for 26-DEC-2013, DOY = 360

DAILY 2013-12-27 23:46:03  
 Re = 209.67 (198.58, -66.83, -8.06 GSE)



RAD2  
 Antenna Ey .....  
 Mode LIN(1) .....  
 SUM/SEP SEP .....  
 Toggle OFF .....  
 RAD1  
 Antenna Ex .....  
 Mode LIS(2,4) .....  
 SUM/SEP SUM .....  
 Toggle OFF .....  
 TNR  
 Antenna ExEy .....  
 Mode A-32 .....  
 Sweep ACE .....