

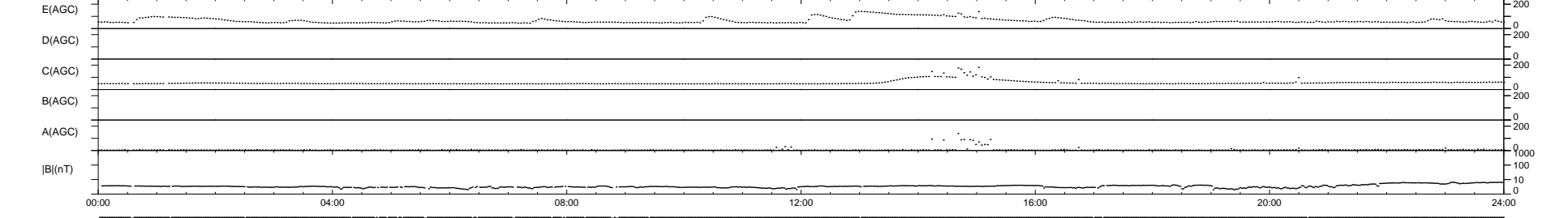
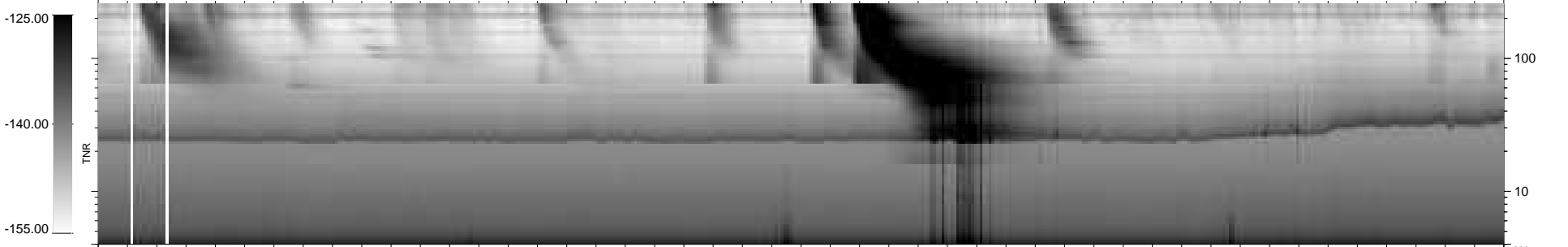
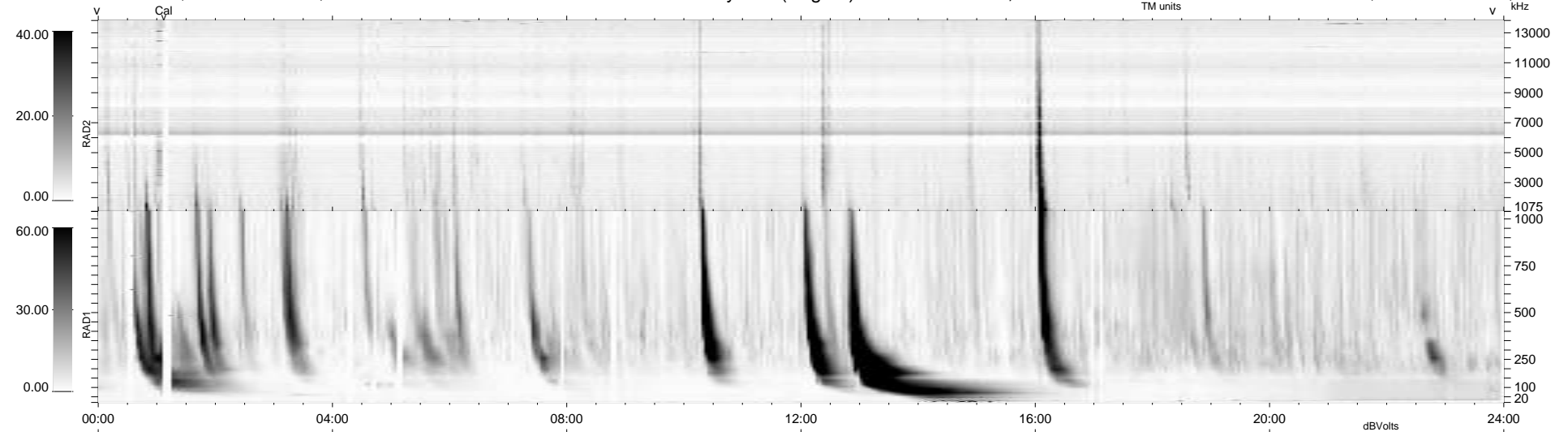
29 bad + 910 good MF/939MF projected (96%) - 0 missing MFs
 Avg interval = 180 secs
 Re = 213.21 (199.63, -74.62, -6.21 GSE)

windlib 2.0b

LZ version = v01

WIND/WAVES Summary Plot (Page 1) for 24-DEC-2013, DOY = 358

DAILY 2013-12-25 21:46:04
 Re = 212.02 (199.24, -72.17, -6.84 GSE)



RAD2
 Antenna Ey
 Mode LIN(1)
 SUM/SEP SEP
 Toggle OFF
 RAD1
 Antenna Ex
 Mode LIS(2/4)
 SUM/SEP SUM
 Toggle OFF
 TNR
 Antenna ExEy
 Mode A-32
 Sweep ACE