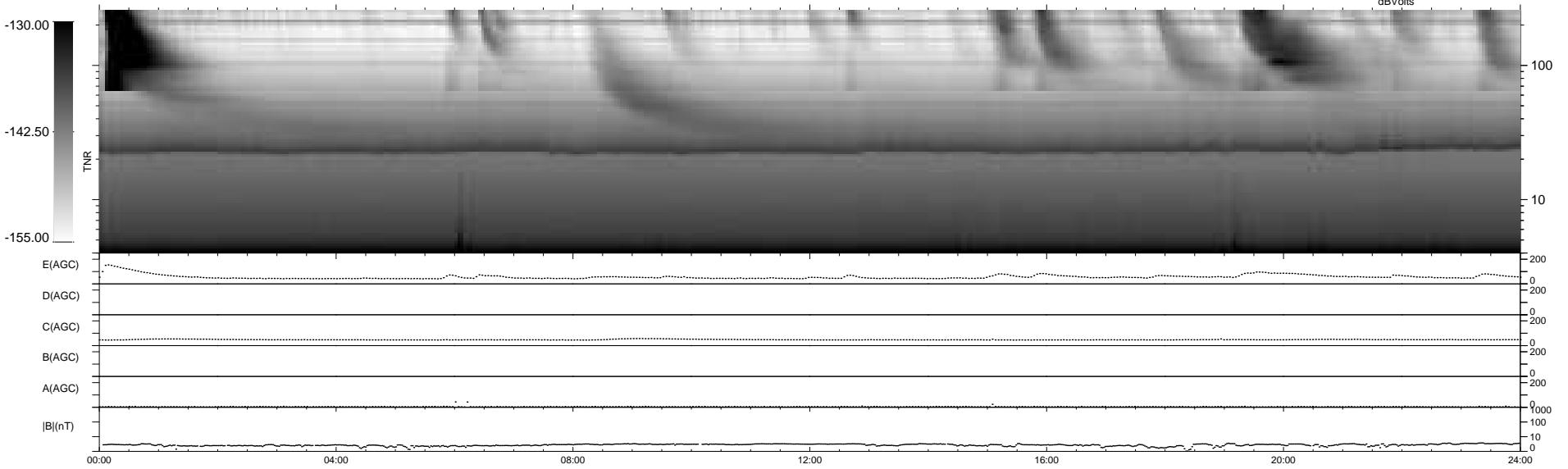
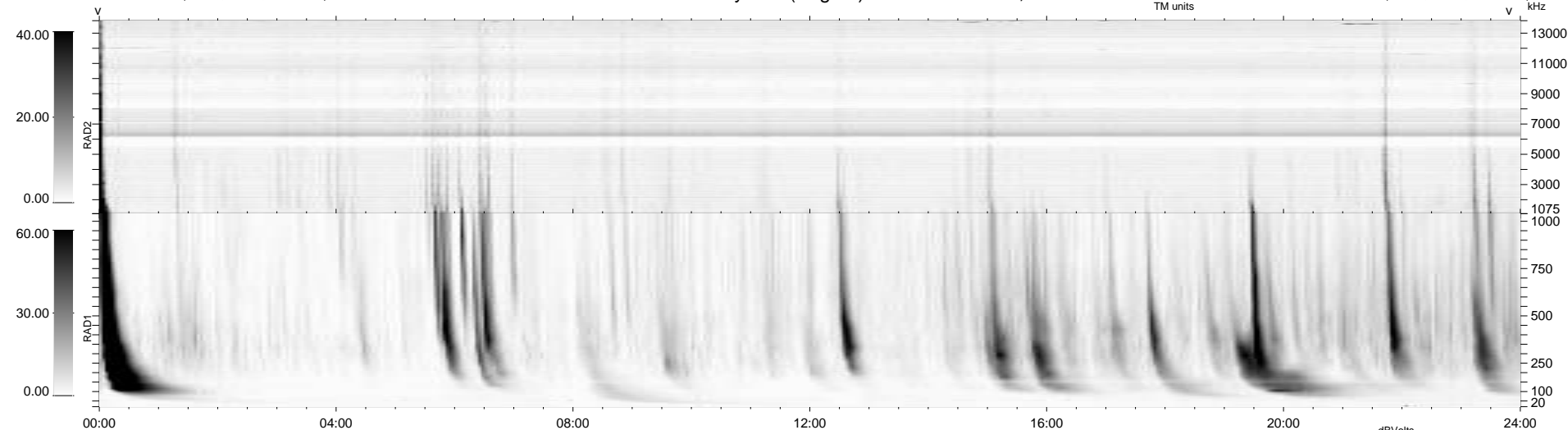


9 bad + 930 good MF/939MF projected (99%) - 0 missing MFs  
 Avg interval = 180 secs  
 Re = 214.43 (200.07, -76.95, -5.57 GSE)

windlib 2.0b LZ version = v01  
 DAILY 2013-12-24 21:46:04  
 Re = 213.22 (199.63, -74.64, -6.20 GSE)

### WIND/WAVES Summary Plot (Page 1) for 23-DEC-2013, DOY = 357



RAD2  
 Antenna Ey  
 Mode LIN(1)  
 SUM/SEP SEP  
 Toggle OFF

RAD1  
 Antenna Ex  
 Mode LIS(2,4)  
 SUM/SEP SUM  
 Toggle OFF

TNR  
 Antenna ExEy  
 Mode A-32  
 Sweep ACE