

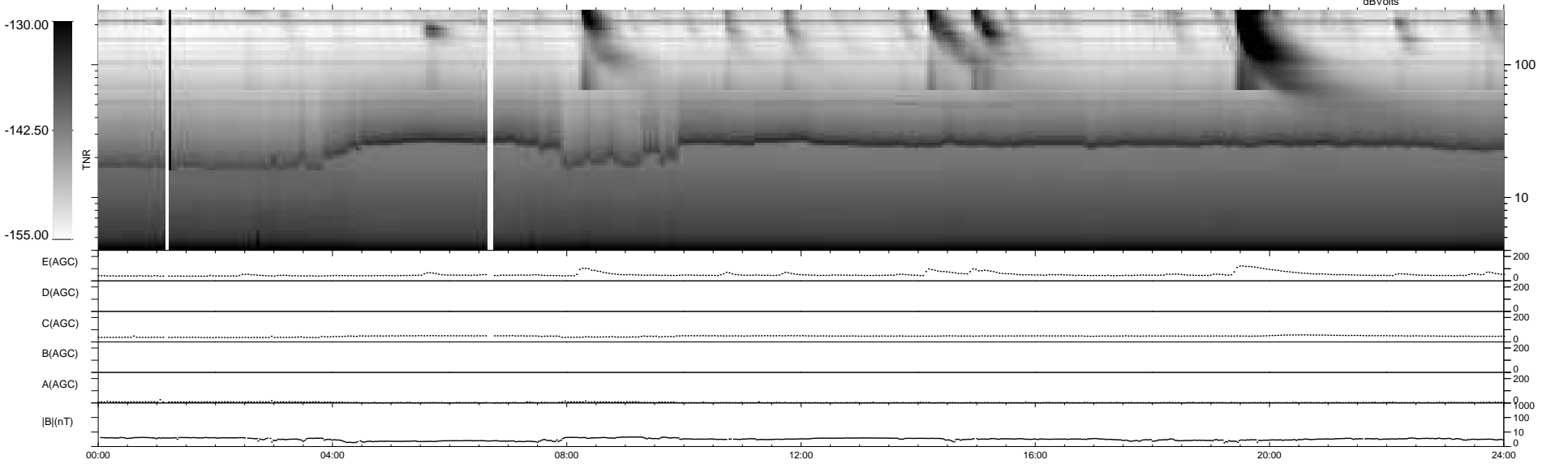
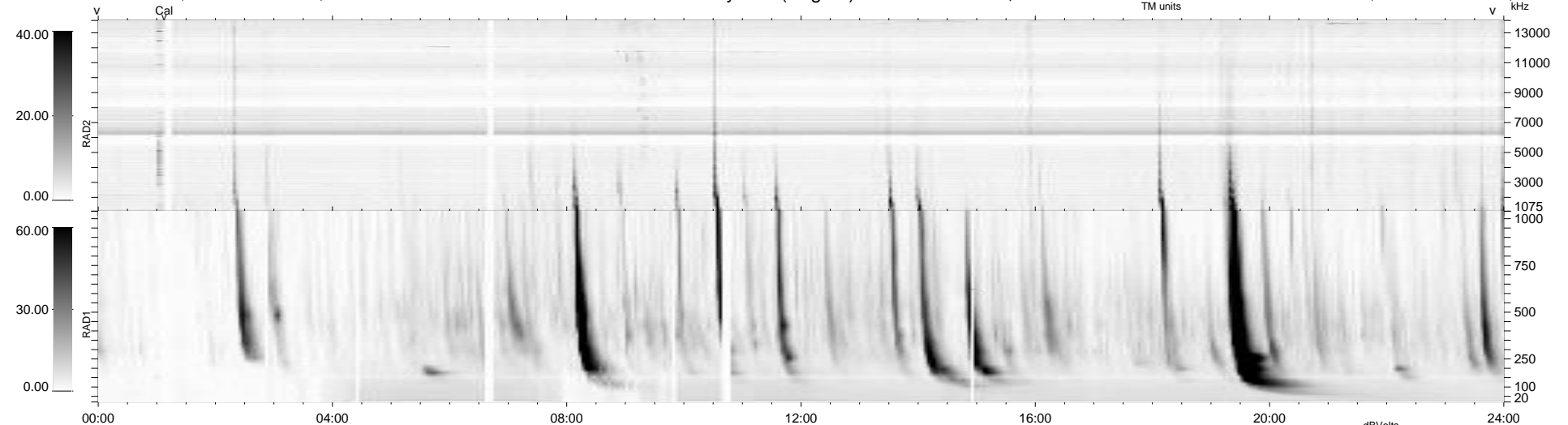
24 bad + 916 good MF/940MF projected (97%) - 0 missing MFs
 Avg interval = 180 secs
 Re = 215.66 (200.55, -79.15, -4.91 GSE)

windlib 2.0b

LZ version = v01

WIND/WAVES Summary Plot (Page 1) for 22-DEC-2013, DOY = 356

DAILY 2013-12-23 07:46:04
 Re = 214.44 (200.07, -76.97, -5.56 GSE)



```

RAD2
Antenna Ey .....
Mode LIN(1) .....
SUM/SEP SEP .....
Toggle OFF .....

RAD1
Antenna Ex .....
Mode LIS(2,4) .....
SUM/SEP SUM .....
Toggle OFF .....

TNR
Antenna ExEy .....
Mode A-32 .....
Sweep ACE .....
  
```