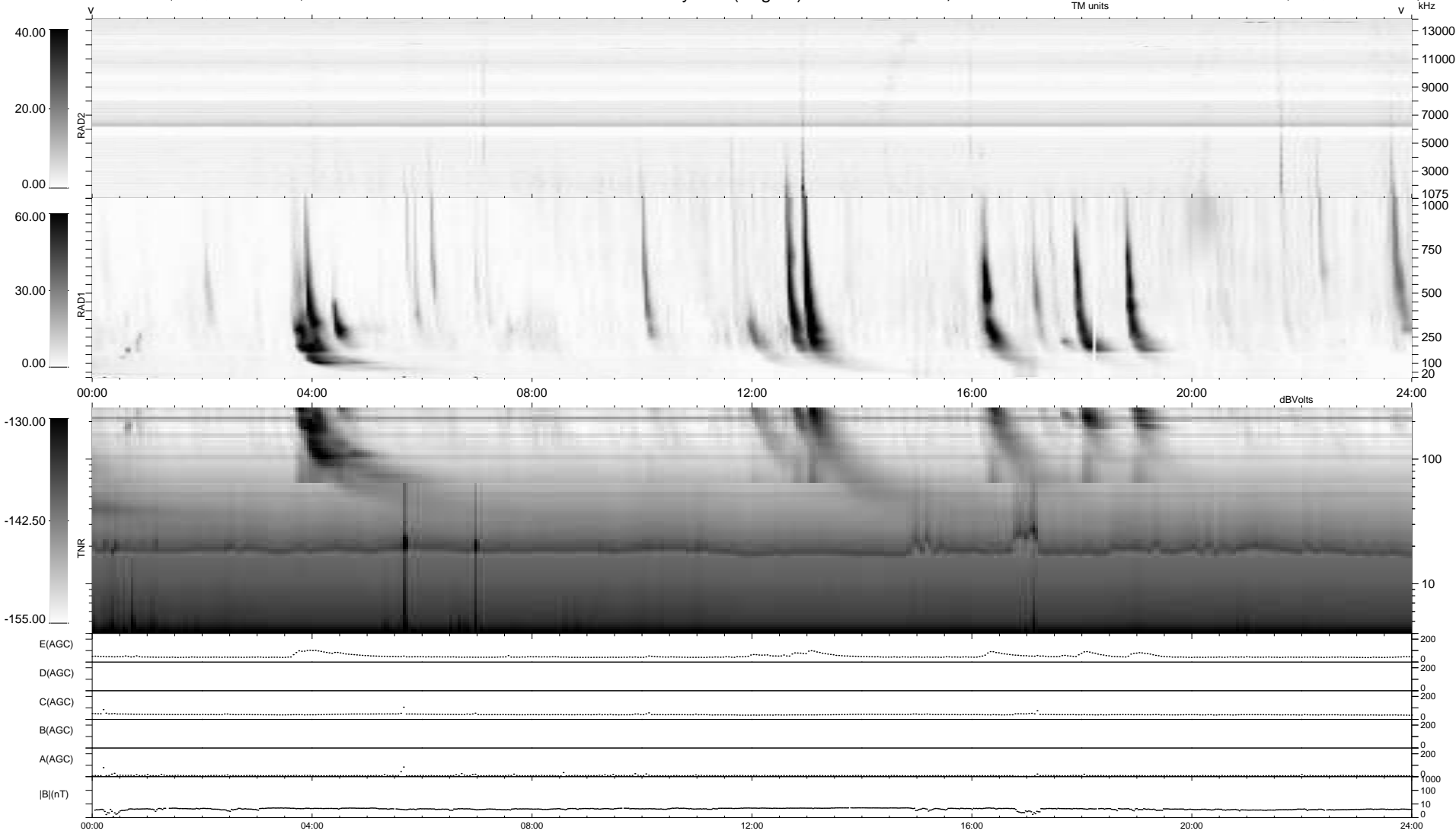


7 bad + 932 good MF/939MF projected (99%) - 0 missing MFs
 Avg interval = 180 secs
 Re = 216.91 (201.10, -81.21, -4.25 GSE)

windlib 2.0b LZ version = v01
 DAILY 2013-12-22 19:46:03
 Re = 215.67 (200.56, -79.16, -4.91 GSE)

WIND/WAVES Summary Plot (Page 1) for 21-DEC-2013, DOY = 355



```

RAD2
Antenna Ey .....
Mode LIN(1) .....
SUM/SEP SEP .....
Toggle OFF .....

RAD1
Antenna Ex .....
Mode LIS(2,4) .....
SUM/SEP SUM .....
Toggle OFF .....

TNR
Antenna ExEy .....
Mode A-32 .....
Sweep ACE .....
  
```