

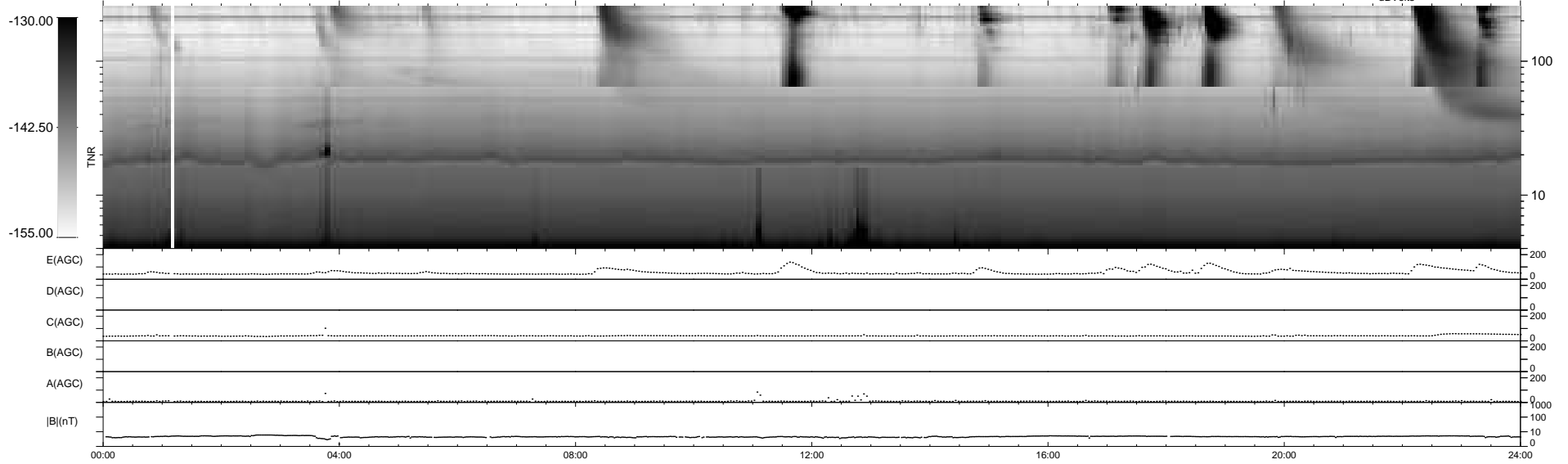
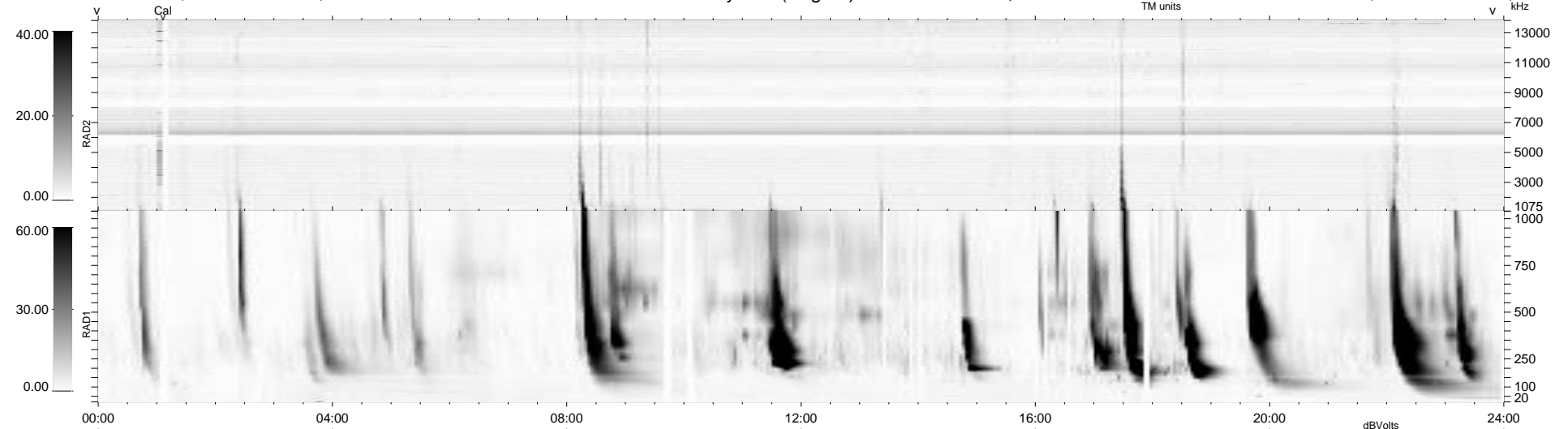
30 bad + 909 good MF/939MF projected (96%) - 0 missing MFs
 Avg interval = 180 secs
 Re = 218.19 (201.70, -83.13, -3.57 GSE)

windlib 2.0b

LZ version = v01

WIND/WAVES Summary Plot (Page 1) for 20-DEC-2013, DOY = 354

DAILY 2013-12-21 19:46:03
 Re = 216.92 (201.10, -81.22, -4.24 GSE)



RAD2
 Antenna Ey
 Mode LIN(1)
 SUM/SEP SEP
 Toggle OFF

RAD1
 Antenna Ex
 Mode LIS(2,4)
 SUM/SEP SUM
 Toggle OFF

TNR
 Antenna ExEy
 Mode A-32
 Sweep ACE