

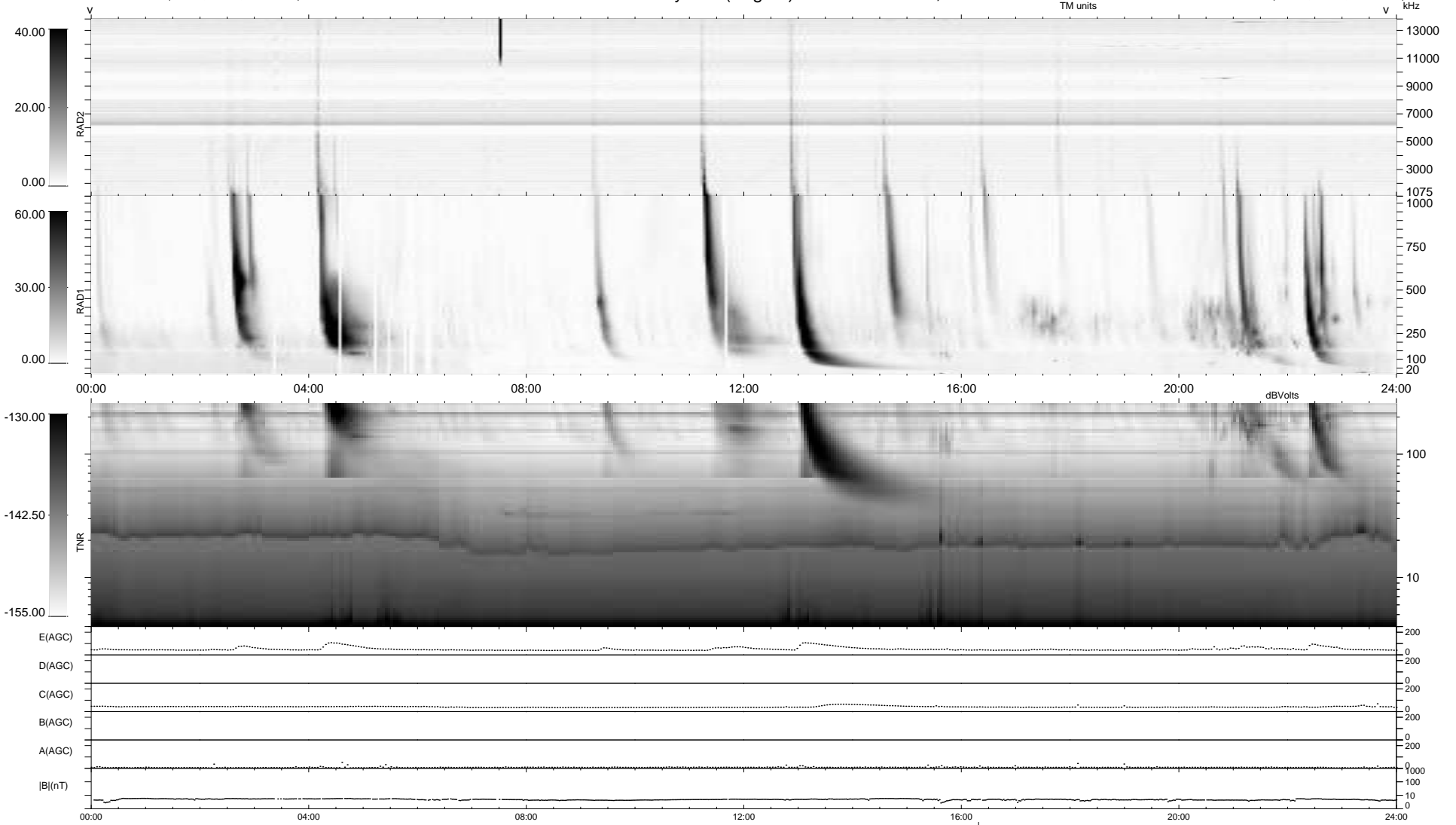
25 bad + 913 good MF/939MF projected (97%) - 1 missing MF  
 Avg interval = 180 secs  
 Re = 219.48 (202.36, -84.93, -2.89 GSE)

windlib 2.0b

LZ version = v01

### WIND/WAVES Summary Plot (Page 1) for 19-DEC-2013, DOY = 353

DAILY 2013-12-20 21:46:05  
 Re = 218.20 (201.70, -83.14, -3.57 GSE)



RAD2  
 Antenna Ey .....  
 Mode LIN(1) .....  
 SUM/SEP SEP .....  
 Toggle OFF .....  
 RAD1  
 Antenna Ex .....  
 Mode LIS(2,4) .....  
 SUM/SEP SUM .....  
 Toggle OFF .....  
 TNR  
 Antenna ExEy .....  
 Mode A-32 .....  
 Sweep ACE .....