

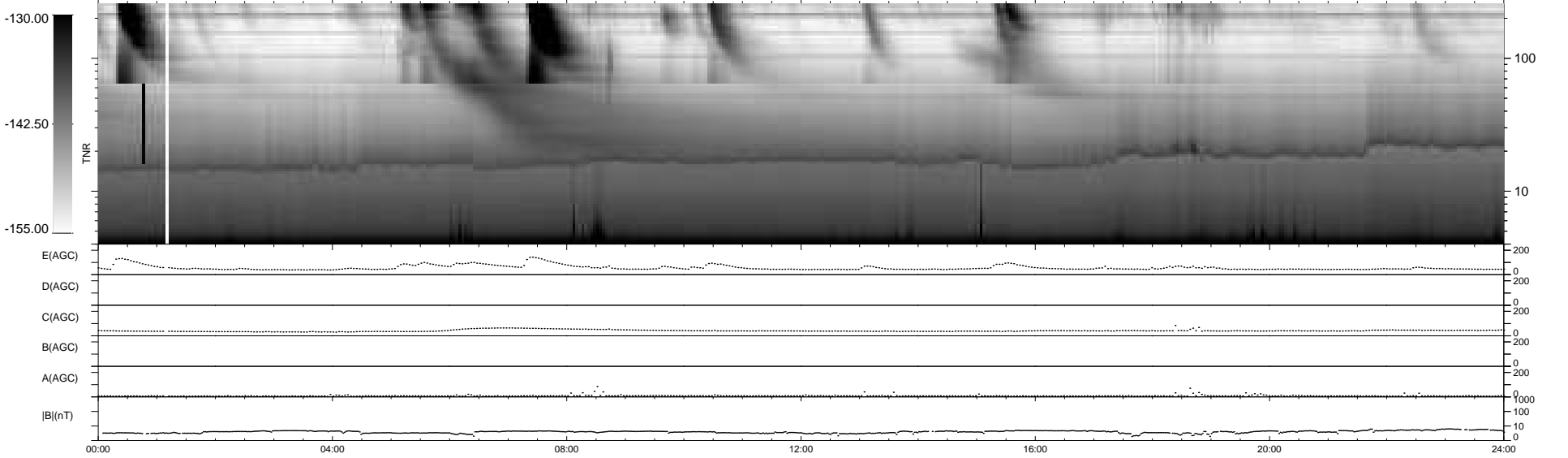
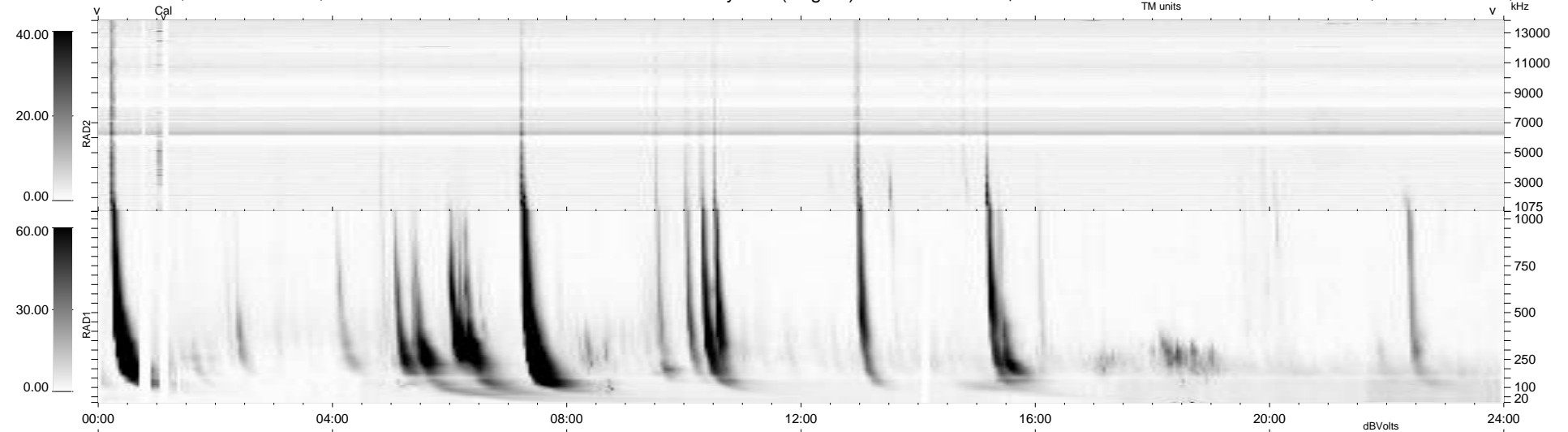
18 bad + 921 good MF/939MF projected (98%) - 0 missing MFs
 Avg interval = 180 secs
 Re = 220.79 (203.09, -86.59, -2.20 GSE)

windlib 2.0b

LZ version = v02

WIND/WAVES Summary Plot (Page 1) for 18-DEC-2013, DOY = 352

DAILY 2013-12-23 14:46:07
 Re = 219.49 (202.37, -84.94, -2.89 GSE)



RAD2
 Antenna Ey
 Mode LIN(1)
 SUM/SEP SEP
 Toggle OFF

RAD1
 Antenna
 Mode
 SUM/SEP
 Toggle

TNR
 Antenna ExEy
 Mode A-32
 Sweep ACE