

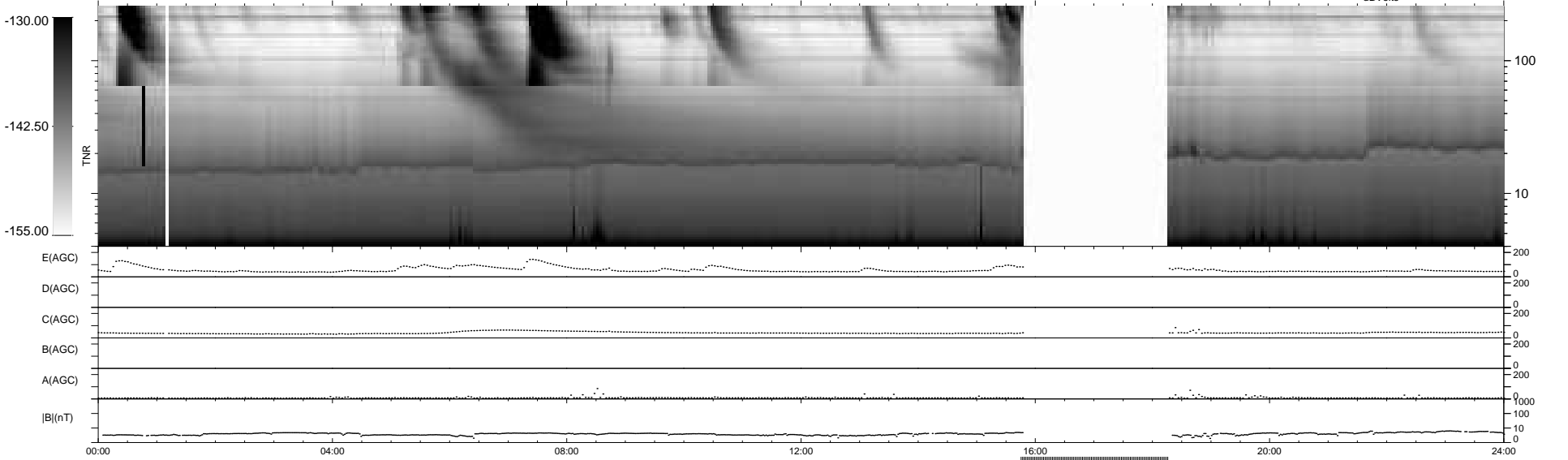
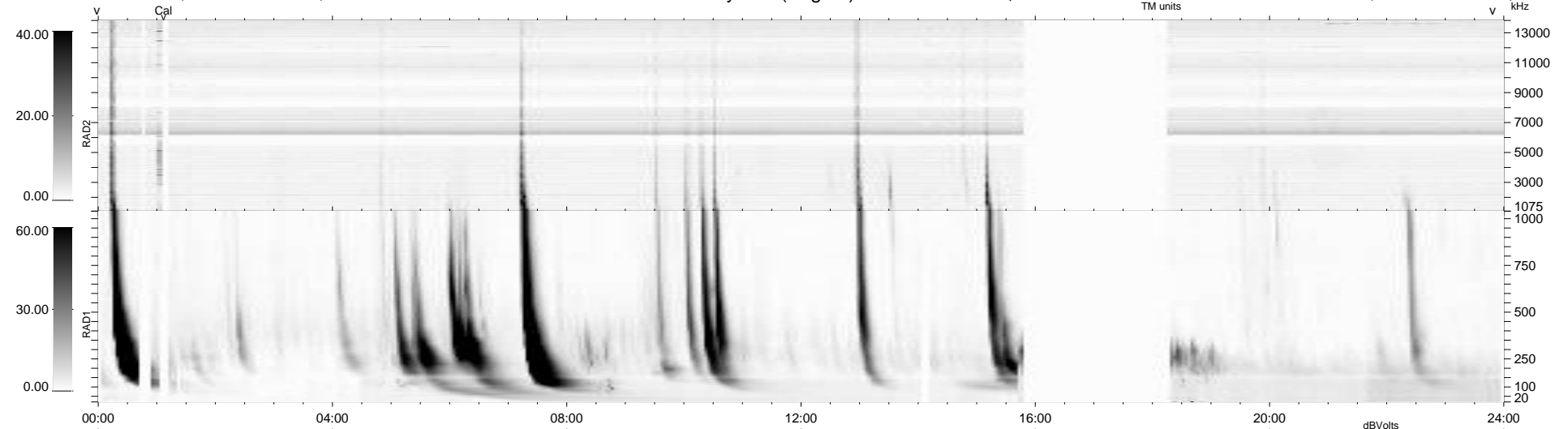
18 bad + 822 good MF/939MF projected (87%) - 99 missing MFs  
 Avg interval = 180 secs  
 Re = 220.79 (203.09, -86.59, -2.20 GSE)

windlib 2.0b

LZ version = v01

### WIND/WAVES Summary Plot (Page 1) for 18-DEC-2013, DOY = 352

DAILY 2013-12-19 17:46:03  
 Re = 219.49 (202.37, -84.94, -2.89 GSE)



RAD2  
 Antenna Ey .....  
 Mode LIN(1) .....  
 SUM/SEP SEP .....  
 Toggle OFF .....  
 RAD1  
 Antenna .....  
 Mode .....  
 SUM/SEP .....  
 Toggle .....  
 TNR  
 Antenna ExEy .....  
 Mode A-32 .....  
 Sweep ACE .....