

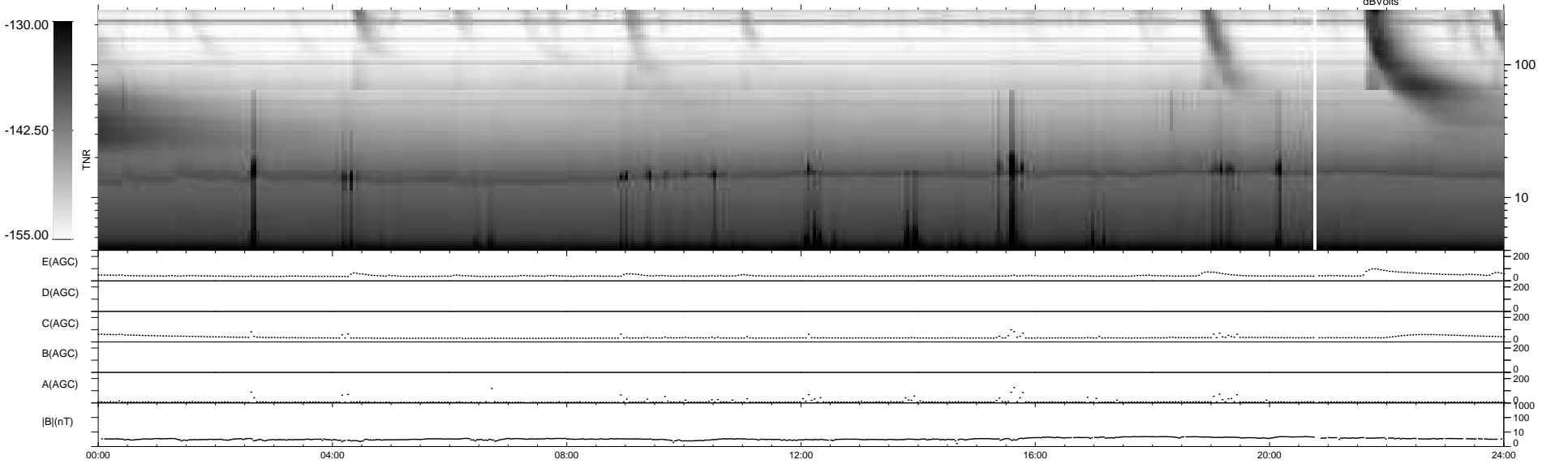
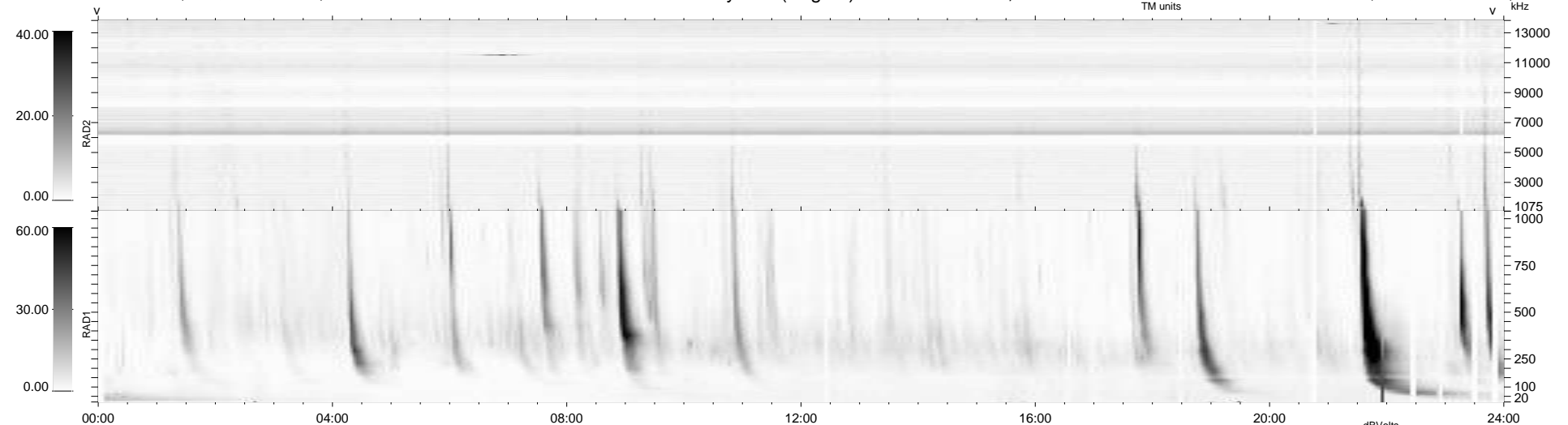
24 bad + 915 good MF/939MF projected (97%) - 0 missing MFs
 Avg interval = 180 secs
 Re = 222.12 (203.88, -88.14, -1.51 GSE)

windlib 2.0b

LZ version = v01

WIND/WAVES Summary Plot (Page 1) for 17-DEC-2013, DOY = 351

DAILY 2013-12-18 12:46:03
 Re = 220.80 (203.09, -86.60, -2.20 GSE)



RAD2
 Antenna Ey
 Mode LIN(1)
 SUM/SEP SEP
 Toggle OFF

RAD1
 Antenna
 Mode
 SUM/SEP
 Toggle

TNR
 Antenna ExEy
 Mode A-32
 Sweep ACE