

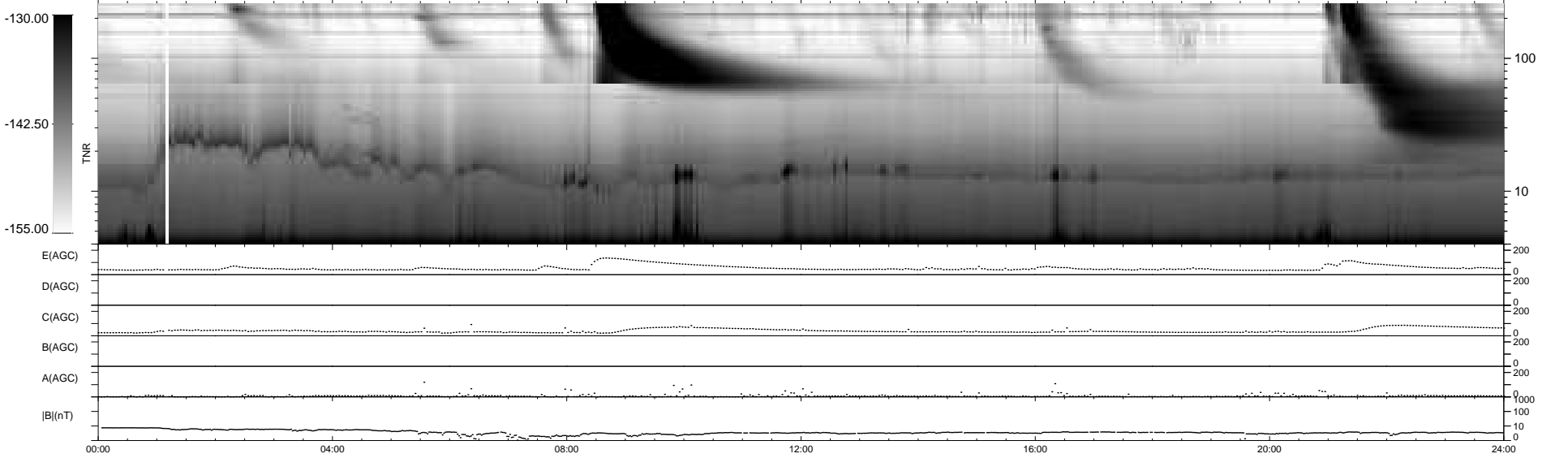
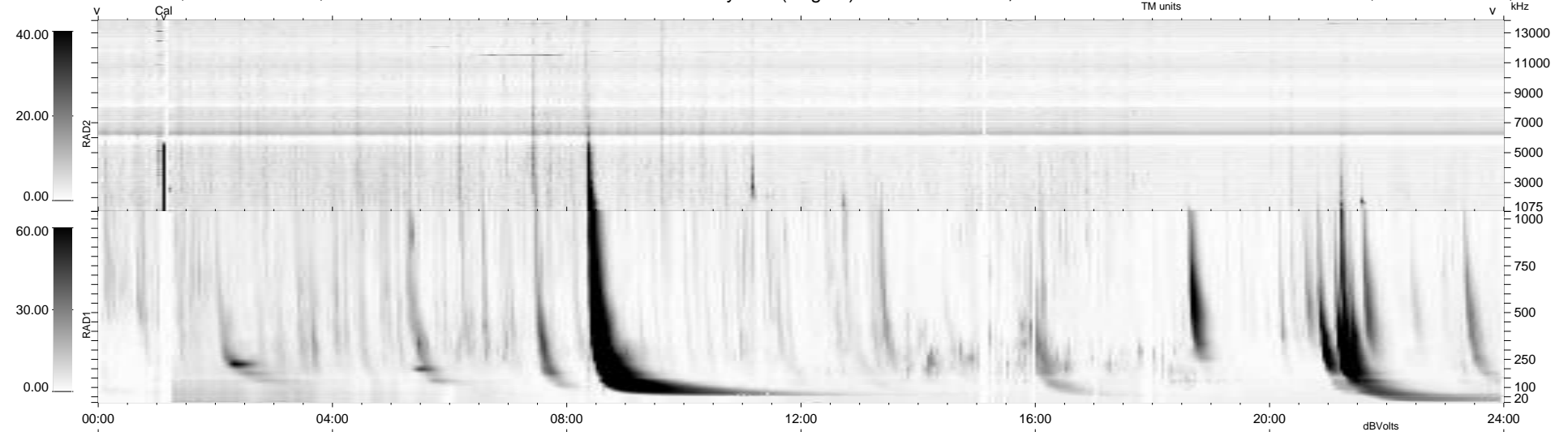
25 bad + 914 good MF/939MF projected (97%) - 0 missing MFs
 Avg interval = 180 secs
 Re = 223.47 (204.74, -89.56, -0.81 GSE)

windlib 2.0b

LZ version = v01

WIND/WAVES Summary Plot (Page 1) for 16-DEC-2013, DOY = 350

DAILY 2013-12-17 09:46:04
 Re = 222.13 (203.89, -88.15, -1.50 GSE)



RAD2
 Antenna Ey
 Mode LIN(1)
 SUM/SEP SEP
 Toggle OFF

RAD1
 Antenna
 Mode
 SUM/SEP
 Toggle

TNR
 Antenna ExEy
 Mode A-32
 Sweep ACE