

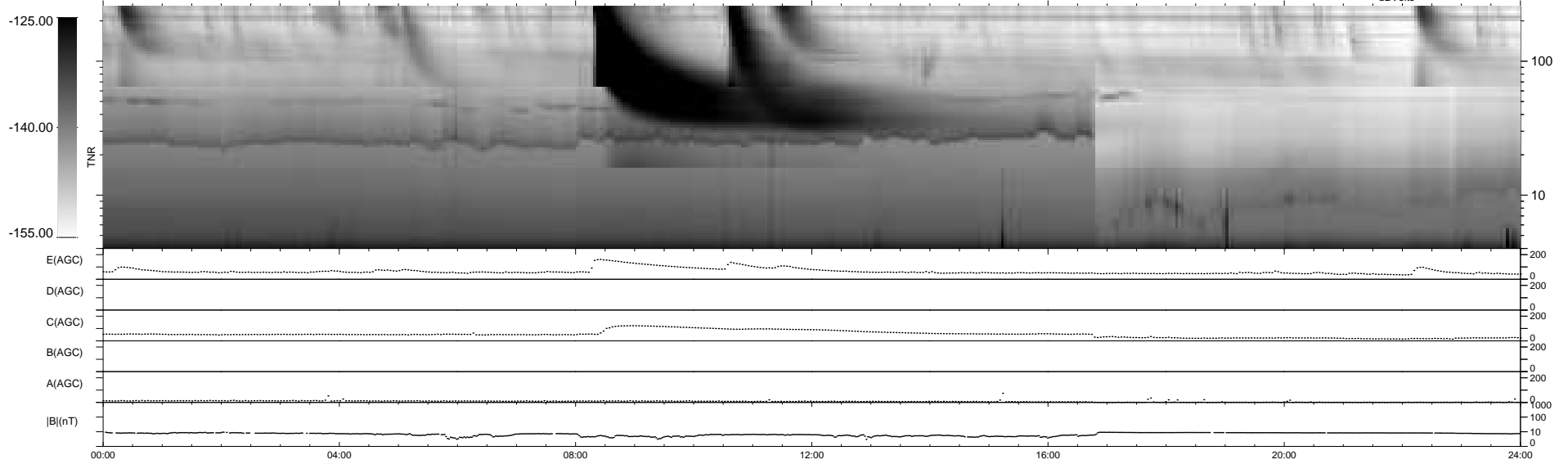
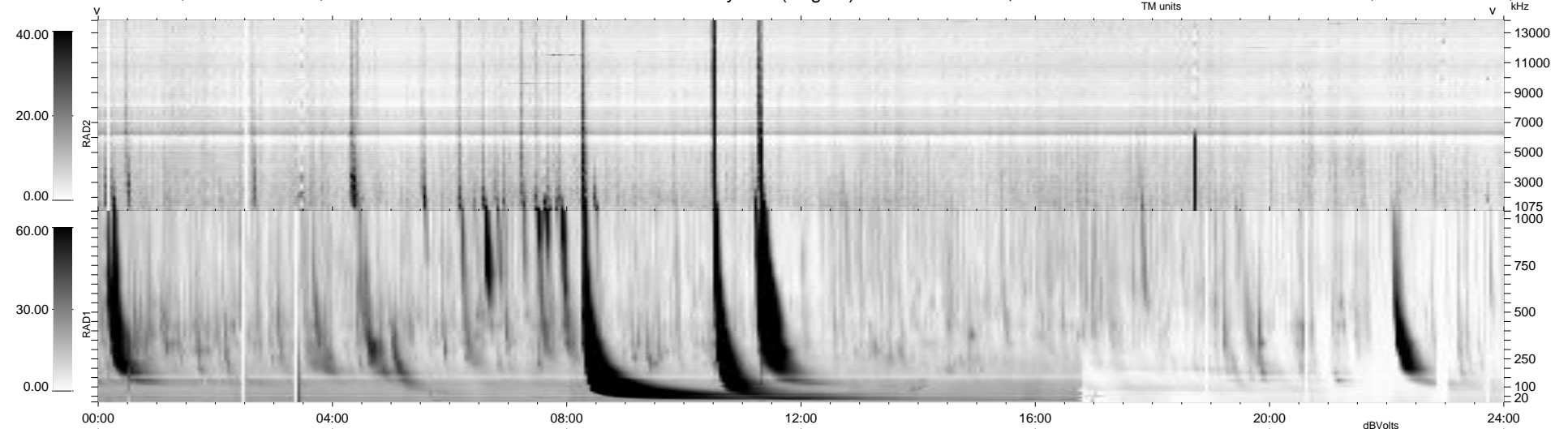
29 bad + 911 good MF/940MF projected (96%) - 0 missing MFs  
 Avg interval = 180 secs  
 Re = -224.84 (205.66, -90.87, -0.11 GSE)

windlib 2.0b

LZ version = v01

### WIND/WAVES Summary Plot (Page 1) for 15-DEC-2013, DOY = 349

DAILY 2013-12-16 03:46:04  
 Re = 223.48 (204.74, -89.57, -0.80 GSE)



RAD2  
 Antenna Ey  
 Mode LIN(1)  
 SUM/SEP SEP  
 Toggle OFF

RAD1  
 Antenna Ex  
 Mode LIS(2,4)  
 SUM/SEP SUM  
 Toggle OFF

TNR  
 Antenna ExEy  
 Mode A-32  
 Sweep ACE