

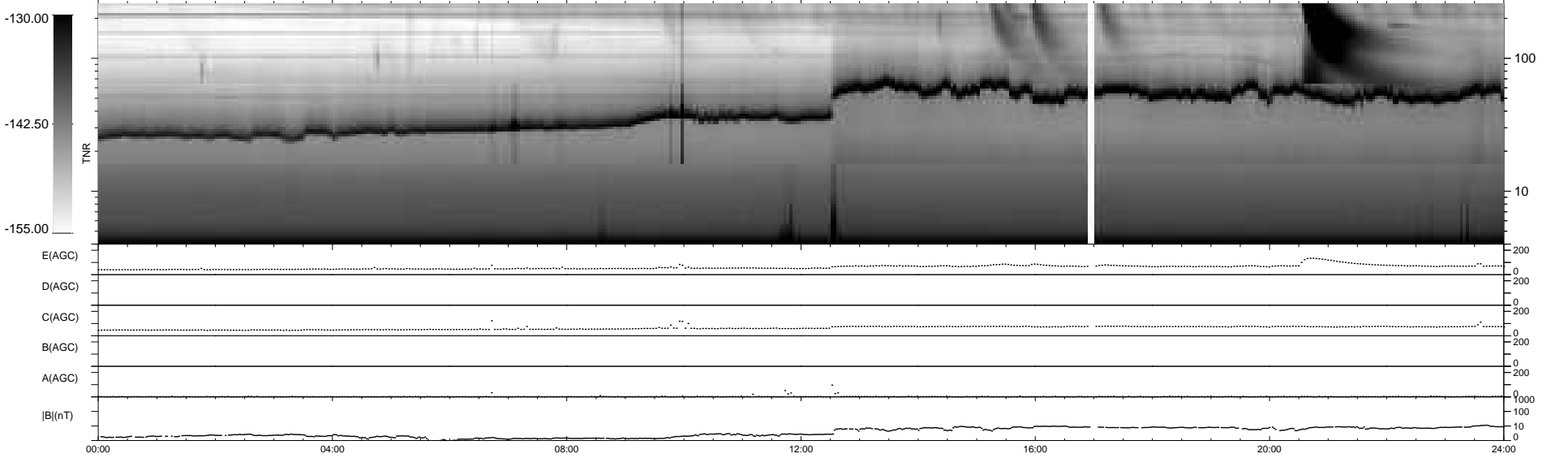
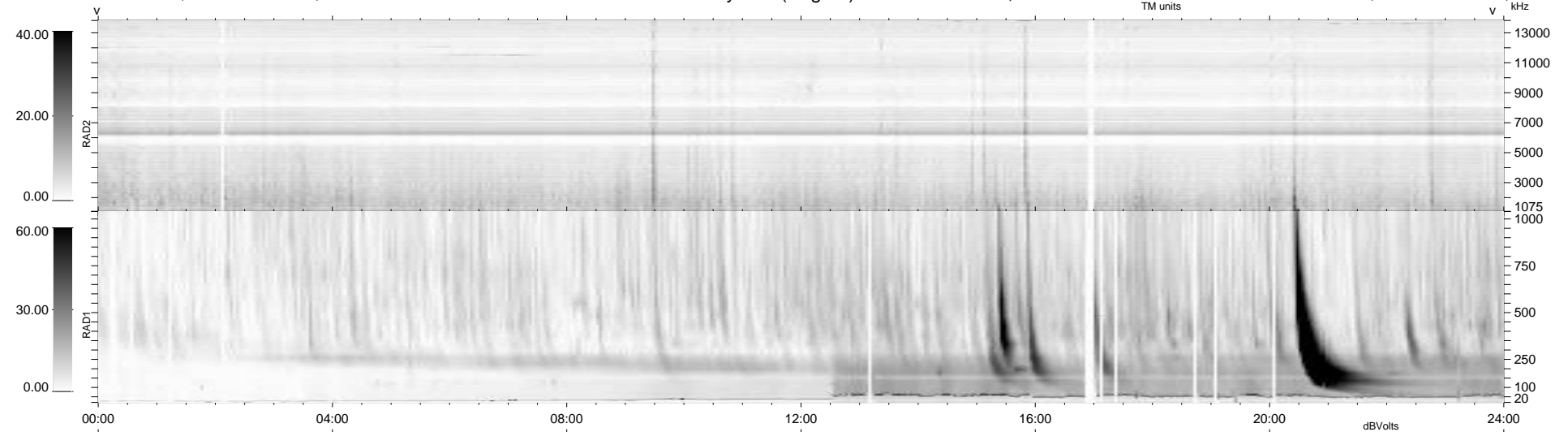
36 bad + 903 good MF/939MF projected (96%) - 0 missing MFs
 Avg interval = 180 secs
 Re = 227.62 (207.68, -93.17, 1.30 GSE)

windlib 2.0b

LZ version = v01

WIND/WAVES Summary Plot (Page 1) for 13-DEC-2013, DOY = 347

DAILY 2013-12-14 11:46:04
 Re = 226.23 (206.65, -92.08, 0.60 GSE)



```

RAD2
Antenna Ey .....
Mode LIN(1) .....
SUM/SEP SEP .....
Toggle OFF .....

RAD1
Antenna Ex .....
Mode LIS(2,4) .....
SUM/SEP SUM .....
Toggle OFF .....

TNR
Antenna ExEy .....
Mode A-32 .....
Sweep ACE .....
  
```