

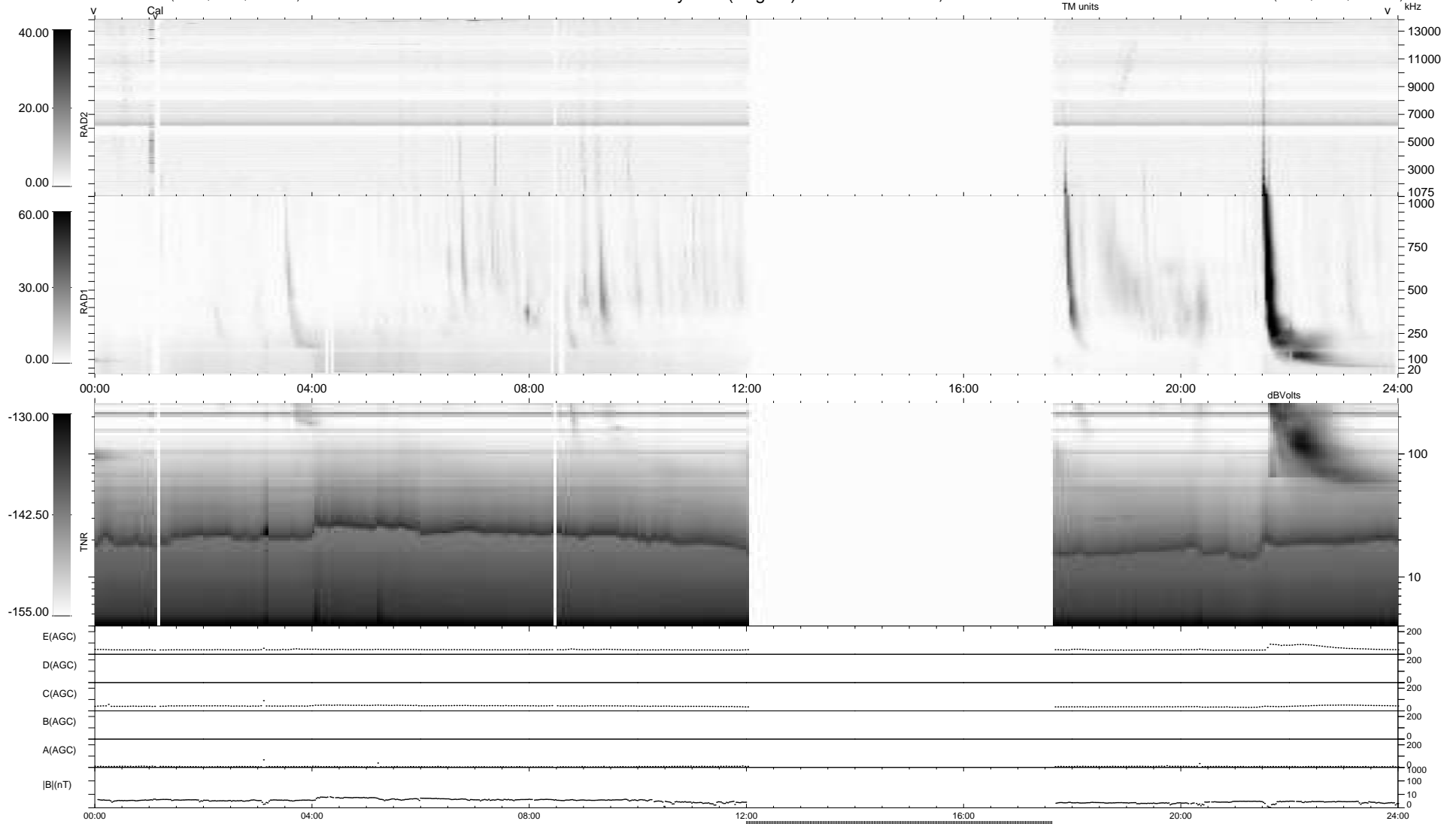
19 bad + 699 good MF/939MF projected (74%) - 221 missing MFs
 Avg interval = 180 secs
 Re = 231.87 (211.09, -95.86, 3.39 GSE)

windlib 2.0b

LZ version = v01

WIND/WAVES Summary Plot (Page 1) for 10-DEC-2013, DOY = 344

DAILY 2013-12-11 23:46:03
 Re = 230.46 (209.92, -95.07, 2.70 GSE)



RAD2
 Antenna Ey
 Mode LIN(1)
 SUM/SEP SEP
 Toggle OFF
 RAD1
 Antenna Ex
 Mode LIS(2,4)
 SUM/SEP SUM
 Toggle OFF
 TNR
 Antenna ExEy
 Mode A-32
 Sweep ACE